

WAAS CH <b>82718</b> <b>W04A</b>	APP CRS <b>038°</b>	Rwy Ldg <b>13502</b> TDZE <b>3607</b> Apt Elev <b>3607</b>
--	------------------------	--

# RNAV (GPS) Y RWY 4

RICK HUSBAND AMARILLO INTL (AMA)

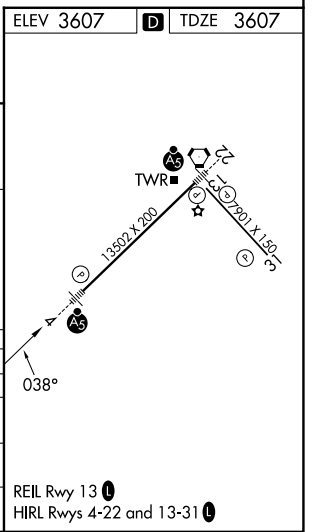
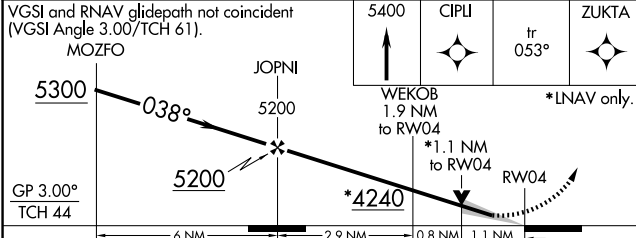
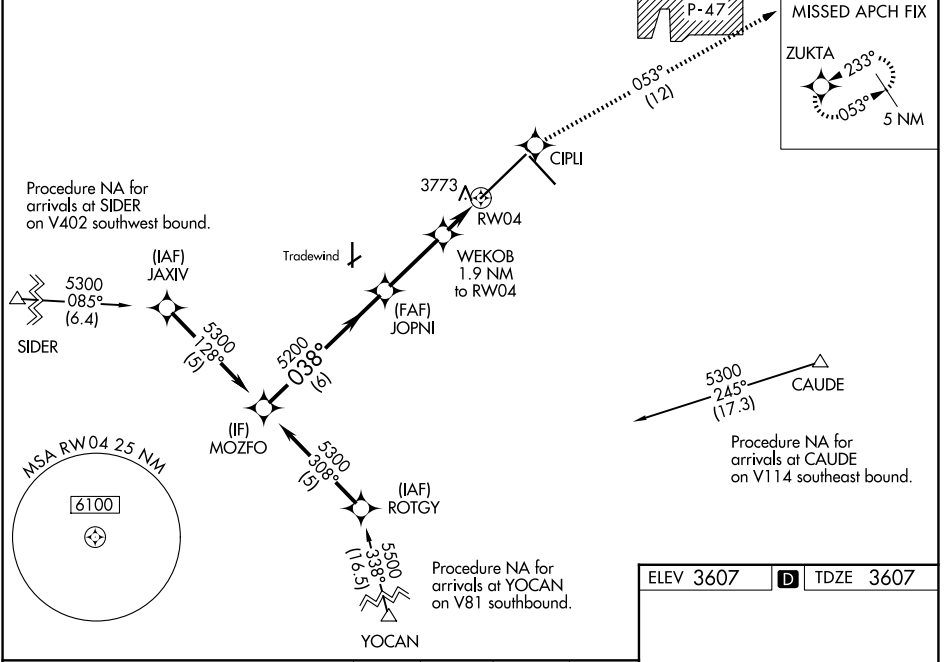
RNP APCH.

**ASR**  
For uncompensated Baro-VNAV systems, LNAV/VNAV NA below -22°C or above 41°C. For inop ALS, increase LPV Cat E visibility to RVR 4000, and LNAV/VNAV and LNAV Cat E to 1¼ SM.  
\*\* RVR 1800 authorized with use of FD or AP or HUD to DA.



**MISSED APPROACH:** Climb to 5400 direct CIPLI and on track 053° to ZUKTA and hold.

ATIS <b>118.85 350.3</b>	AMARILLO APP CON* <b>119.5 307.0</b>	AMARILLO TOWER* <b>118.3 (CTAF) 257.9</b>	GND CON <b>121.9 348.6</b>	CLNC DEL <b>121.65 239.275</b>	UNICOM <b>122.95</b>
-----------------------------	---	--	-------------------------------	-----------------------------------	-------------------------



CATEGORY	A	B	C	D	E
LPV DA **	3807/24		200 (200-1/2)		
LNAV/VNAV DA	4028/50		421 (500-1)		
LNAV MDA	4040/24	433 (500-1/2)	4040/40 433 (500-3/4)	4040/50	433 (500-1)
CIRCLING	4080-1	473 (500-1)	4240-1 3/4 633 (700-1 3/4)	4280-2 1/4 673 (700-2 1/4)	4460-3 853 (900-3)

SC-2, 16 APR 2026 to 14 MAY 2026

SC-2, 16 APR 2026 to 14 MAY 2026