

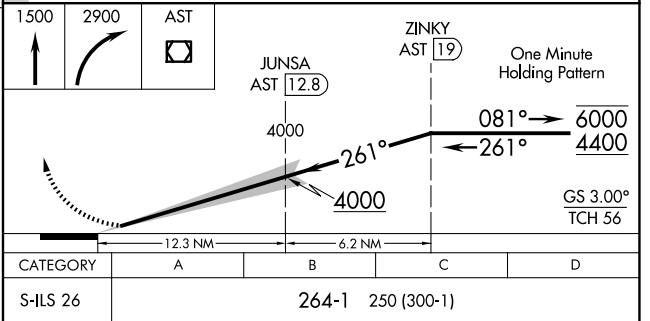
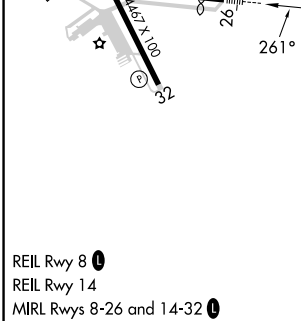
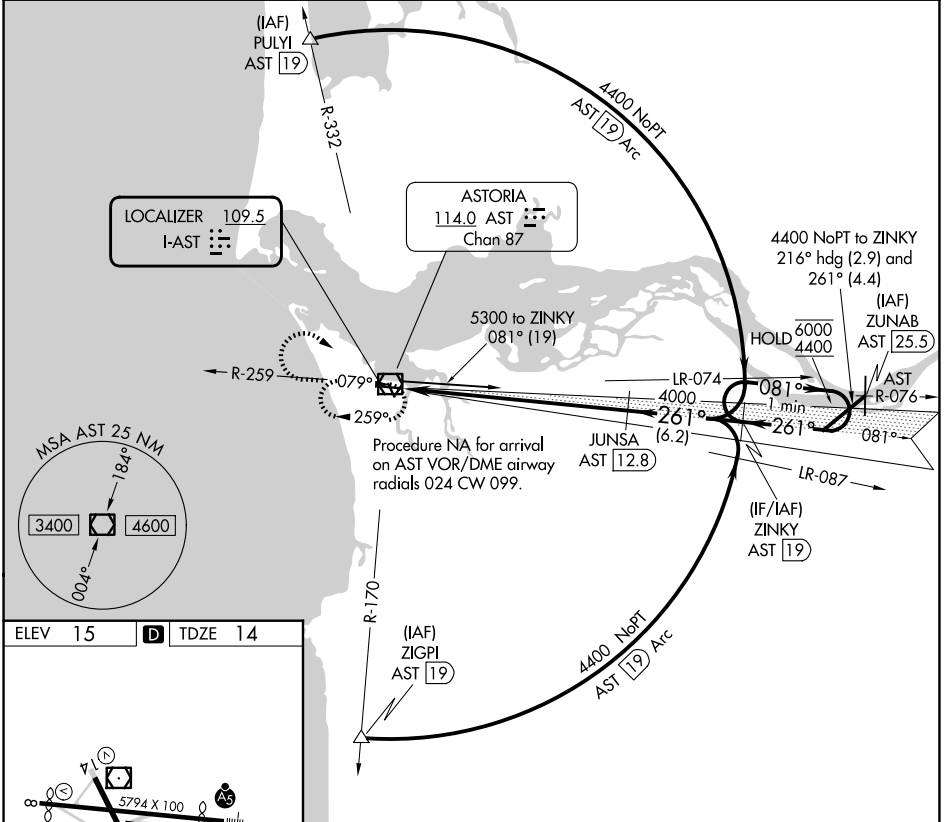
LOC I-AST 109.5	APP CRS 261°	Rwy Ldg 4780
		TDZE 14
		Apt Elev 15

ILS RWY 26

ASTORIA RGNL (AST)

DME required for procedure entry.		MALSR 	MISSED APPROACH: Climb to 1500 then climbing right turn to 2900 direct AST VOR/DME and hold.
	Rwy 26 helicopter visibility reduction below 3/4 SM NA. Inoperative table does not apply.		

ASOS 135.375	SEATTLE CENTER 124.2 317.6	UNICOM 122.8 (CTAF) 0
------------------------	--------------------------------------	---------------------------------



NW-1, 16 APR 2026 to 14 MAY 2026

NW-1, 16 APR 2026 to 14 MAY 2026