

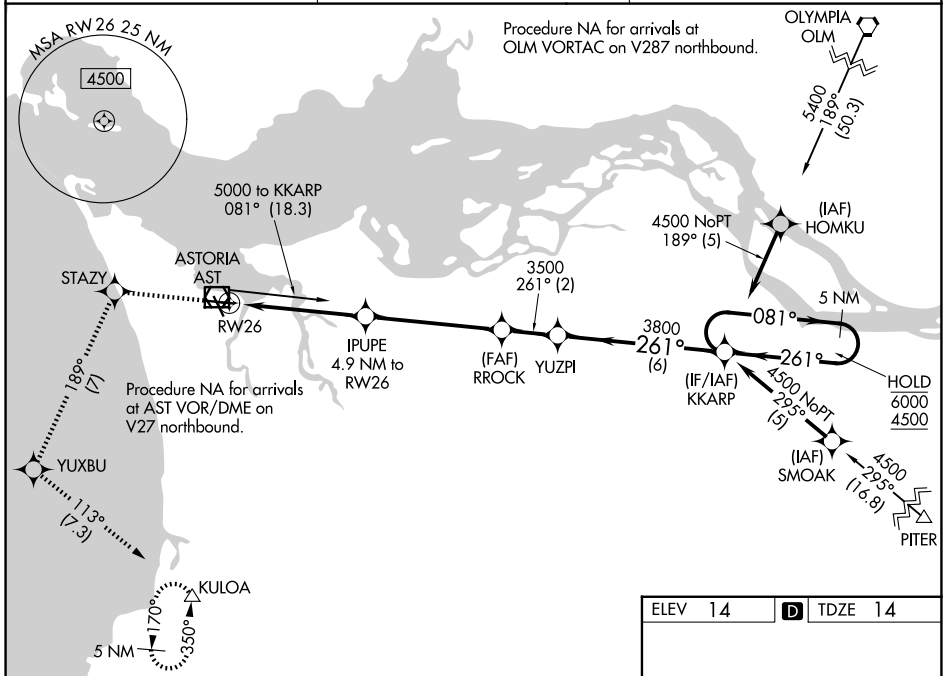
WAAS CH 97711 W26A	APP CRS 261°	Rwy Ldg TDZE Apt Elev	4780 14 14
--	------------------------	-----------------------------	---------------------------------------

RNAV (GPS) RWY 26

ASTORIA RGNL (AST)

RNP APCH.	MALSR	MISSED APPROACH: (Do not exceed 210K until STAZY) Climb to 5000 direct STAZY and left turn on track 189° to YUXBU and left turn on track 113° to KULOA and hold, continue climb-in-hold to 5000.
<p>▼</p> <p>▲ Inop table does not apply to LPV all Cats. Rwy 26 helicopter visibility reduction below ¾ SM NA. For inop ALS, increase LNAV Cat A/B visibility to 1 SM and Cat C/D to 1 ½ SM.</p>		

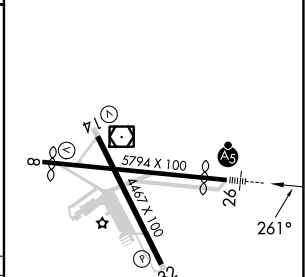
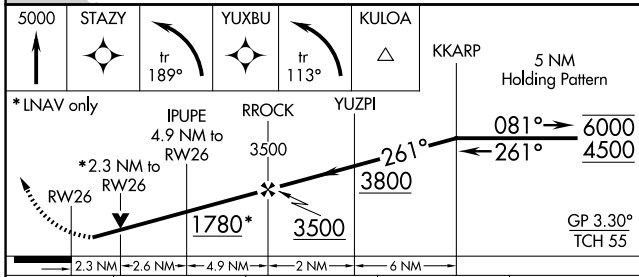
ASOS 135.375	SEATTLE CENTER 124.2 317.6	UNICOM 122.8 (CTAF)
------------------------	--------------------------------------	-------------------------------



NW-1, 16 APR 2026 to 14 MAY 2026

NW-1, 16 APR 2026 to 14 MAY 2026

ELEV 14	TDZE 14
---------	---------



CATEGORY	A	B	C	D
LPV DA	264-¾		250 (300-¾)	
LNAV MDA	860-¾	846 (900-¾)	860-1⅞	846 (900-1⅞)
CIRCLING	860-1¼	846 (900-1¼)	1080-3 1066 (1100-3)	1160-3 1146 (1200-3)

REIL Rwy 8
REIL Rwy 14
MIRL Rwy 8-26 and 14-32