

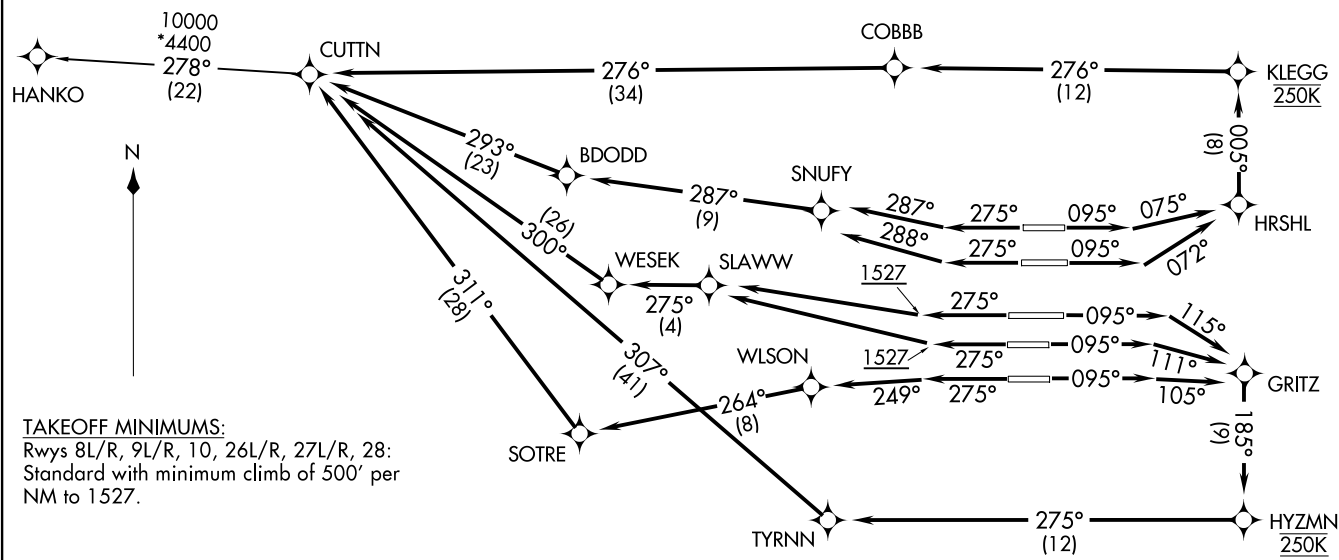
D-ATIS 125.55
 CLNC DEL 118.1
 CPDLC
 GND CON
 121.9 254.4 (Rwys 8L-26R, 8R-26L)
 121.75 254.4 (Rwys 9L-27R, 9R-27L)
 121.65 254.4 (Rwy 10-28)
 ATLANTA TOWER
 119.1 254.4 (Rwy 8L-26R)
 125.325 254.4 (Rwy 8R-26L)
 119.3 254.4 (Rwy 9R-27L)
 123.85 254.4 (Rwy 9L-27R)
 119.5 254.4 (Rwy 10-28)
 ATLANTA DEP CON
 133.475 281.425 (Rwys 8L-26R, 8R-26L)
 125.65 281.425 (Rwys 9L-27R, 9R-27L)
 121.225 281.425 (Rwy 10-28)

- NOTE: If unable to accept climb rate, advise Clearance Delivery on initial contact.
 NOTE: Use departure frequency depicted unless otherwise advised.
 NOTE: For Turbojet aircraft only.
 NOTE: DME/DME/IRU or GPS Required.
 NOTE: RNAV 1.
 NOTE: RADAR Required for non-GPS equipped aircraft.
 NOTE: Transponder code will be issued via PDC or Atlanta Clearance Delivery.
 NOTE: Accelerate to 250K, if unable, advise both tower and Departure Control on initial contact.
 NOTE: Aircraft at Midfield Ramps will advise Ramp Towers of departure SID prior to pushback.
 Upon receipt of ATC clearance (from ATL Clearance Delivery), read back only your call sign and transponder code, unless you have a question.

**TOP ALTITUDE:
10000**

CUTTIN TWO DEPARTURE (RNAV)
 (CUTTIN2.CUTTIN) 10 NOV '16
 ATLANTA, GEORGIA
 HARTSFIELD/JACKSON ATLANTA INTL (ATL)

(CUTTIN2.CUTTIN) 24305
 CUTTIN TWO DEPARTURE (RNAV)
 AL-26 (FAA)
 HARTSFIELD/JACKSON ATLANTA INTL (ATL)
 ATLANTA, GEORGIA



(CONTINUED ON FOLLOWING PAGE)

NOTE: Chart not to scale.



DEPARTURE ROUTE DESCRIPTION
SEE ADDITIONAL REQUIREMENTS ON AAUP

TAKEOFF RWY 8L: Climb heading 095° to intercept course 075° to HRSHL, then on depicted route to CUTTN, maintain 250K to KLEGG, thence. . . .

TAKEOFF RWY 8R: Climb heading 095° to intercept course 072° to HRSHL, then on depicted route to CUTTN, maintain 250K to KLEGG, thence. . . .

TAKEOFF RWY 9L: Climb heading 095° to intercept course 115° to GRITZ, then on depicted route to CUTTN, maintain 250K to HYZMN, thence. . . .

TAKEOFF RWY 9R: Climb heading 095° to intercept course 111° to GRITZ, then on depicted route to CUTTN, maintain 250K to HYZMN, thence. . . .

TAKEOFF RWY 10: Climb heading 095° to intercept course 105° to GRITZ, then on depicted route to CUTTN, maintain 250K to HYZMN, thence. . . .

TAKEOFF RWY 26L: Climb heading 275° to intercept course 288° to SNUFY, then on depicted route to CUTTN, thence. . . .

TAKEOFF RWY 26R: Climb heading 275° to intercept course 287° to SNUFY, then on depicted route to CUTTN, thence. . . .

TAKEOFF RWYS 27L/R: Climb heading 275° to 1527, then direct SLAWW, then on depicted route to CUTTN, thence. . . .

TAKEOFF RWY 28: Climb heading 275° to intercept course 249° to WLSON, then on depicted route to CUTTN, thence. . . .

. . . .maintain 10000. Expect clearance to filed altitude ten minutes after departure.

HANKO TRANSITION (CUTTN2.HANKO)

SE-4, 16 APR 2026 to 14 MAY 2026

SE-4, 16 APR 2026 to 14 MAY 2026