

LOC/DME I-GXZ 110.1 Chan 38	APP CRS 275°	Rwy Ldg TDZE Apt Elev	8500 990 1026
---	------------------------	-----------------------------	--

ILS RWY 26R (SA CAT I & II)

HARTSFIELD/JACKSON ATLANTA INTL (ATL)

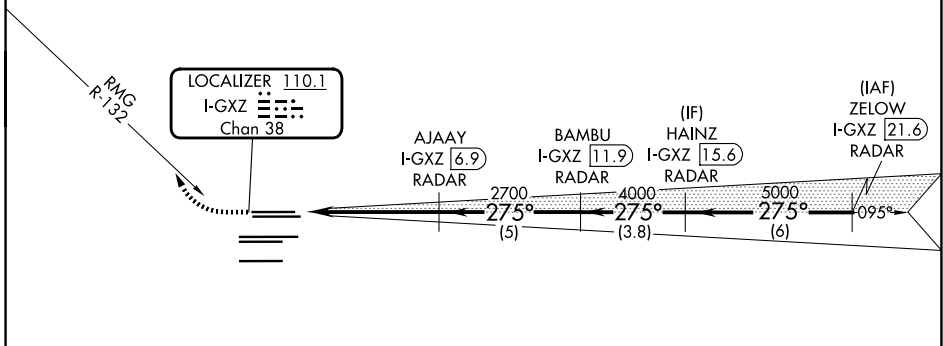
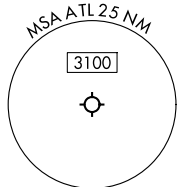
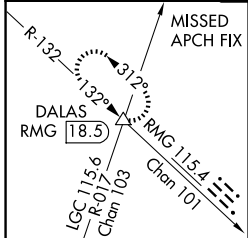
RADAR required.

SA CAT I/II: Requires specific OPSPEC, MSPEC, or LOA approval. Simultaneous approach authorized.

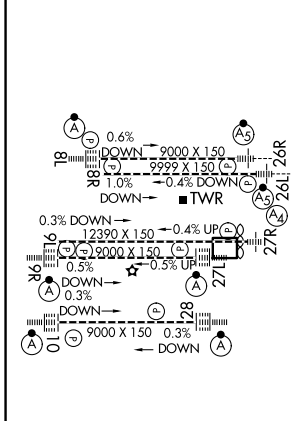


MISSED APPROACH: Climb to 1800 then climbing right turn to 4000 on RMG VORTAC R-132 to DALAS INT/RMG 18.5 DME and hold.

D-ATIS 119.65	ATLANTA APP CON 127.9 379.9	ATLANTA TOWER				ALL RWYS	GND CON	ALL RWYS
		8L-26R	8R-26L	9L-27R	9R-27L	10-28	(8L-26R, 8R-26L) (9L-27R, 9R-27L)	10-28
		119.1	125.325	123.85	119.3	119.5	254.4	121.9
								121.75 121.65 254.4



ELEV 1026	D	TDZE 990
-----------	----------	----------



1800	4000	DALAS	VGSI and ILS glidepath not coincident (VGSI Angle 3.00/TCH 69).			
	RMG R-132			HAINZ	ZELOW	
			AJAAY	BAMBU	I-GXZ 15.6	I-GXZ 21.6
			I-GXZ 6.9	I-GXZ 11.9	RADAR	RADAR
			2700	4000	5000	5000
			275°	275°	275°	095°
			(5)	(3.8)	(6)	
			5.2 NM	5 NM	3.8 NM	6 NM
			1149°			
CATEGORY	A	B	C	D		
S-ILS 26R	SA CAT I RA 170/14		150 DA 1140			
S-ILS 26R	SA CAT II RA 110/12		100 DA 1090			

HIRL all Rwys
TDZL/RCLS Rwys 8L,
9R, 10, 26R, 27L and 28

SA CATEGORY I & II ILS - SPECIAL AIRCREW & AIRCRAFT CERTIFICATION REQUIRED

SE-4, 16 APR 2026 to 14 MAY 2026

SE-4, 16 APR 2026 to 14 MAY 2026