

ATLANTA, GEORGIA

AL-26 (FAA)

26078

LOC/DME I-FSQ 108.5 Chan 22	APP CRS 275°	Rwy Ldg TDZE Apt Elev	8865 999 1026
---	------------------------	-----------------------------	--

ILS RWY 27L (SA CAT I)

HARTSFIELD/JACKSON ATLANTA INTL (ATL)

DME or RADAR required.
RADAR required for procedure entry.

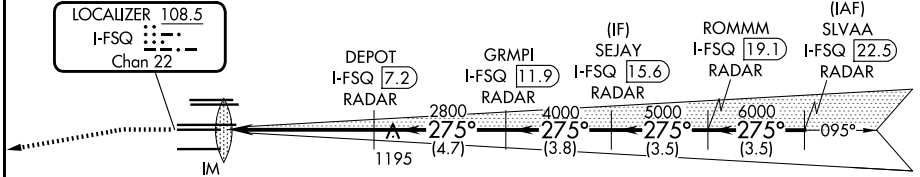
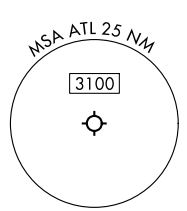
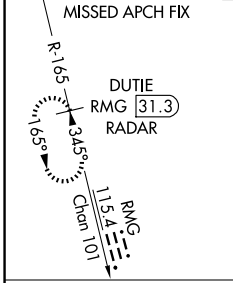
Simultaneous approach authorized.
Requires specific OPSPEC, MSPEC, or LOA approval.

ALSF-2

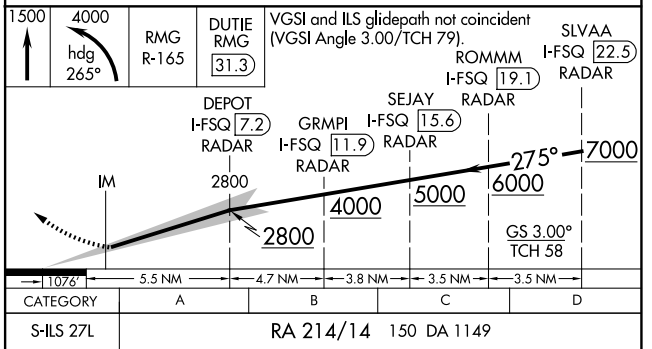
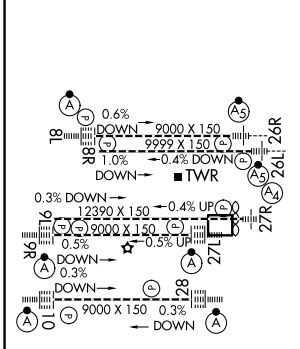


MISSED APPROACH: Climb to 1500 then climbing left turn to 4000 on heading 265° and RMG VORTAC R-165 to DUTIE/RMG 31.3 DME/RADAR and hold.

D-ATIS 119.65	ATLANTA APP CON 127.9 379.9	ATLANTA TOWER					ALL RWYS	GND CON	ALL RWYS
		8L-26R	8R-26L	9L-27R	9R-27L	10-28	(8L-26R, 8R-26L)	(9L-27R, 9R-27L)	10-28
		119.1	125.325	123.85	119.3	119.5 254.4	121.9	121.75	121.65 254.4



ELEV 1026	D	TDZE 999
-----------	----------	----------



SA CATEGORY I ILS- SPECIAL AIRCREW & AIRCRAFT CERTIFICATION REQUIRED

HIRL all Rwws
TDZL/RCLS Rwws 8L,
9R, 10, 26R, 27L and 28

ATLANTA, GEORGIA

Amdt 19 22APR21

HARTSFIELD/JACKSON ATLANTA INTL (ATL)

33°38'N-84°26'W

ILS RWY 27L (SA CAT I)

SE-4, 16 APR 2026 to 14 MAY 2026

SE-4, 16 APR 2026 to 14 MAY 2026