

LOC/DME I-PKU 111.75 Chan 54(Y)	APP CRS 275°	Rwy Ldg TDZE Apt Elev 9000 998 1026
---	------------------------	---

ILS RWY 28 (SA CAT I)

HARTSFIELD/JACKSON ATLANTA INTL (ATL)

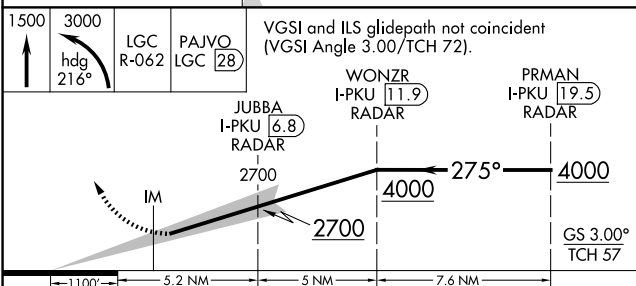
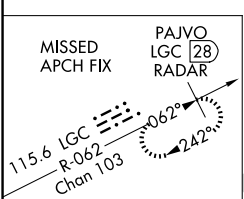
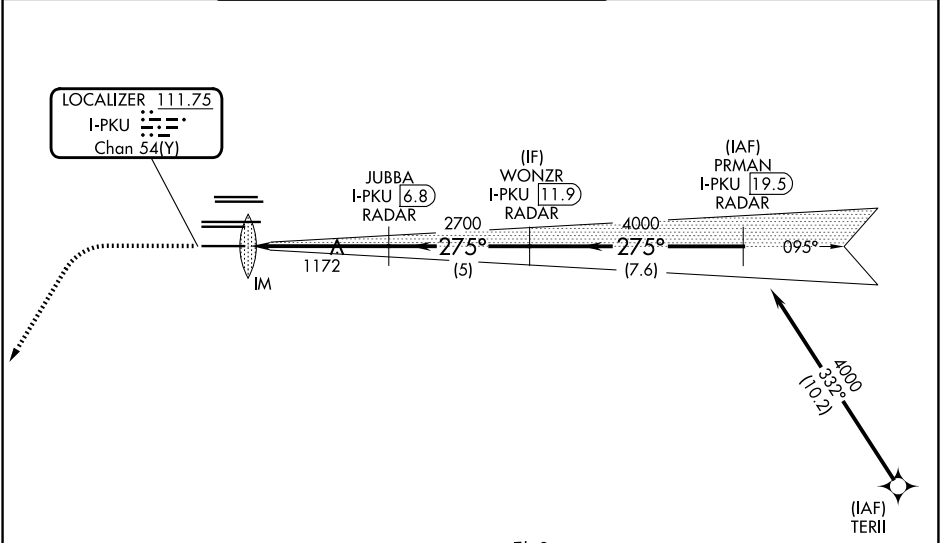
RNAV 1-GPS or RADAR required for procedure entry.
From TERII: RNAV 1-GPS required. DME or RADAR required.

ALSIF-2

MISSED APPROACH: Climb to 1500 then climbing left turn to 3000 on heading 216° and LGC VORTAC R-062 to PAJVO/LGC 28 DME/RADAR and hold.

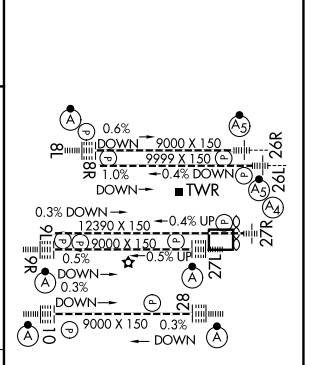
Simultaneous approach authorized.
Requires specific OPSPEC, MSPEC, or LOA approval.

D-ATIS 119.65	ATLANTA APP CON 127.9 379.9	ATLANTA TOWER 8L-26R 8R-26L 9L-27R 9R-27L 10-28 RWYS					ALL RWYS 119.3 119.5 254.4	GND CON 121.9	ALL RWYS 121.75 121.65 254.4
-------------------------	---------------------------------------	---	--	--	--	--	--------------------------------------	-------------------------	--



CATEGORY	A	B	C	D
S-ILS 28	RA 264/14		150 DA 1148	

ELEV 1026	<input checked="" type="checkbox"/> TDZE 998
-----------	--



SA CATEGORY I ILS - SPECIAL AIRCREW & AIRCRAFT CERTIFICATION REQUIRED

HIRT all Rwys
TDZL/RCLS Rwys 8L,
9R, 10, 26R, 27L and 28

SE-4, 16 APR 2026 to 14 MAY 2026

SE-4, 16 APR 2026 to 14 MAY 2026