

LOC/DME I-HFW 109.3 Chan 30	APP CRS 095°	Rwy Ldg TDZE Apt Elev	8800 1015 1026
---	------------------------	-----------------------------	---

ILS RWY 8L (CAT II & III)

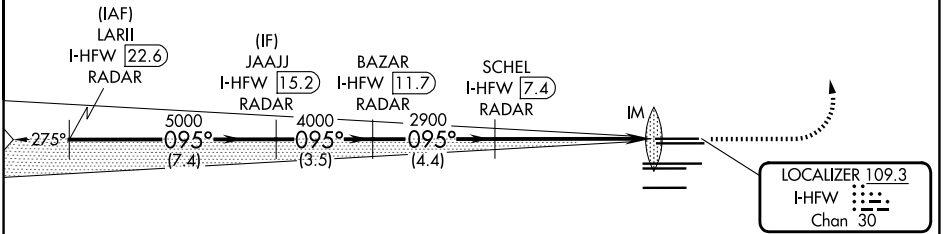
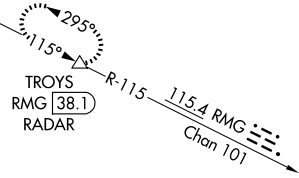
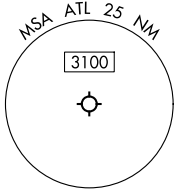
HARTSFIELD/JACKSON ATLANTA INTL (ATL)

RADAR required for procedure entry. DME or RADAR required. **ALSIF-2**

Simultaneous approach authorized.

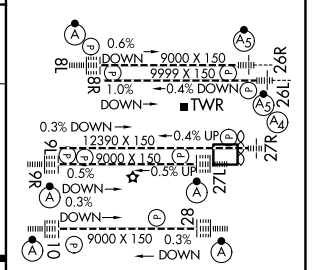
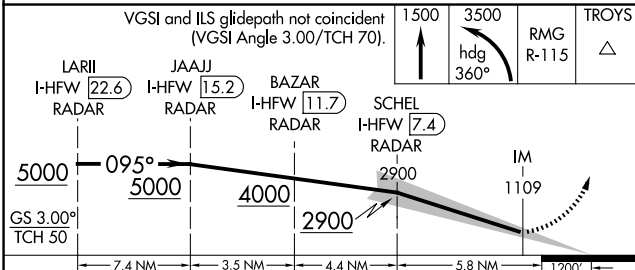
MISSED APPROACH: Climb to 1500 then climbing left turn to 3500 on heading 360° and RMG VORTAC R-115 to TROYS/RMG 38.1 DME/RADAR and hold.

D-ATIS 119.65	ATLANTA APP CON 127.9 379.9	ATLANTA TOWER				ALL RWYS	GND CON	ALL RWYS	
		8L-26R	8R-26L	9L-27R	9R-27L	10-28	(8L-26R, 8R-26L) (9L-27R, 9R-27L)	10-28	ALL RWYS
		119.1	125.325	123.85	119.3	119.5	254.4	121.9	121.75 121.65 254.4



LOCALIZER 109.3
I-HFW **7.4**
Chan **30**

ELEV 1026	D	TDZE 1015
-----------	----------	-----------



CATEGORY	A	B	C	D
S-ILS 8L	CAT II RA 105/12 100 DA 1115			
S-ILS 8L	CAT III RVR 06			

CATEGORY II & III ILS SPECIAL AIRCREW & AIRCRAFT CERTIFICATION REQUIRED

HIRL all Rwys
TDZL/RCLS Rwys 8L,
9R, 10, 26R, 27L and 28

SE-4, 16 APR 2026 to 14 MAY 2026

SE-4, 16 APR 2026 to 14 MAY 2026