

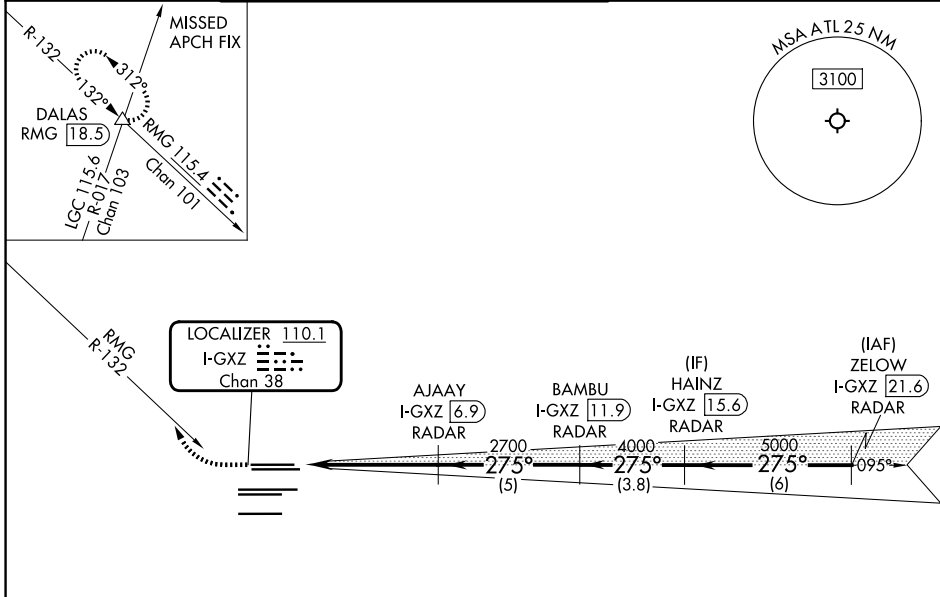
LOC/DME I-GXZ 110.1 Chan 38	APP CRS 275°	Rwy Ldg TDZE Apt Elev	26R 8500	26L 9999 990 1026
---	------------------------	-----------------------------	--------------------	---

ILS or LOC RWY 26R

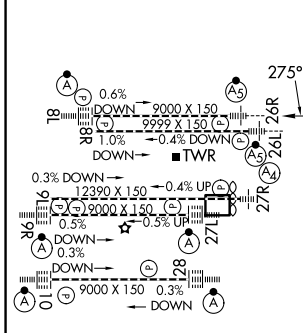
HARTSFIELD/JACKSON ATLANTA INTL (ATL)

RADAR required.		Rwy 26R MALSRS	Rwy 26L MALSRS	MISSED APPROACH: Climb to 1800 then climbing right turn to 4000 on RMG VORTAC R-132 to DALAS INT/RMG 18.5 DME and hold.
▽ Simultaneous approach authorized. For inop ALS, increase sidestep Rwy 26L Cats A and B visibility ¼ SM.				

D-ATIS 119.65	ATLANTA APP CON 127.9 379.9	ATLANTA TOWER				ALL RWYS	GND CON	ALL RWYS
		8L-26R	8R-26L	9L-27R	9R-27L 10-28	(8L-26R, 8R-26L)	9L-27R, 9R-27L 10-28	
		119.1	125.325	123.85	119.3 119.5 254.4	121.9	121.75 121.65 254.4	



ELEV 1026	D	TDZE 26R 990
		TDZE 26L 996



HIRL all Rwys
TDZL/RCLS Rwys 8L, 9R, 10, 26R, 27L and 28

FAF to MAP 5.2 NM

Knots	60	90	120	150	180
Min:Sec	5:12	3:28	2:36	2:05	1:44

1800	4000	DALAS	VGSi and ILS glidepath not coincident (VGSi Angle 3.00/TCH 69).			
			BAMBU I-GXZ [11.9] RADAR	HAINZ I-GXZ [15.6] RADAR	ZELOW I-GXZ [21.6] RADAR	
			AJAY I-GXZ [6.9] RADAR			
			I-GXZ [2.8]			
			I-GXZ [1.7]			
			2700	4000	5000	
			1.1 NM	4.1 NM	5 NM	3.8 NM
			2700	4000	5000	GS 3.00° TCH 55
CATEGORY	A	B	C	D		
S-ILS 26R		1190/18	200 (200-½)			
S-LOC 26R	1420/24	430 (400-½)	1420/40	430 (400-¾)		
SIDESTEP 26L	1420/55	424 (400-1)	1420-1¼ 424 (400-1¼)	1420-1¼ 424 (400-1¼)		

SE-4, 16 APR 2026 to 14 MAY 2026

SE-4, 16 APR 2026 to 14 MAY 2026