

LOC/DME I-PKU <b>111.75</b> Chan <b>54(Y)</b>	APP CRS <b>275°</b>	Rwy Ldg TDZE Apt Elev <b>9000</b> <b>998</b> <b>1026</b>
---	------------------------	---

# ILS or LOC RWY 28

HARTSFIELD/JACKSON ATLANTA INTL (ATL)

RNAV 1-GPS or RADAR required for procedure entry.  
From TERII: RNAV 1-GPS required. DME or RADAR required.

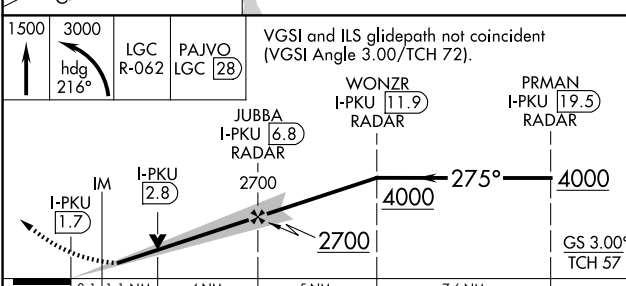
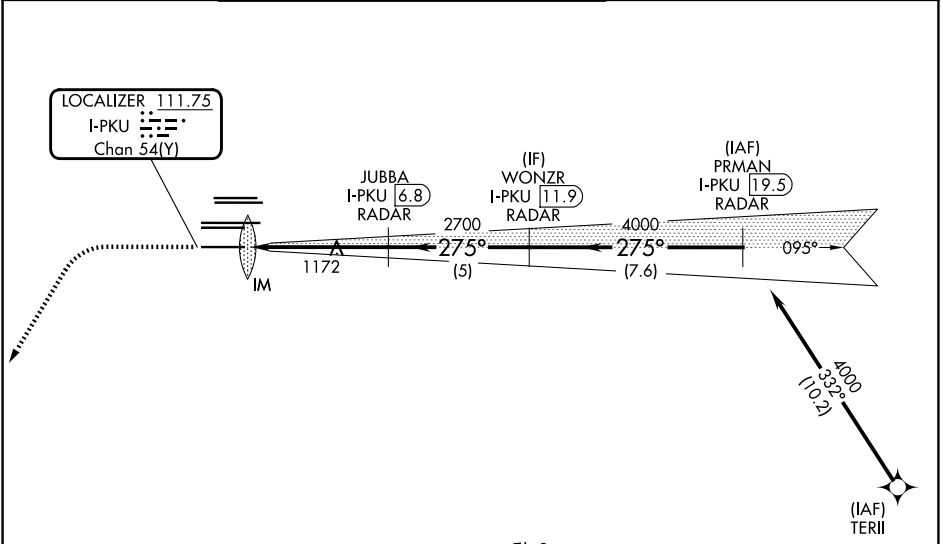
ALSF-2

MISSED APPROACH: Climb to 1500 then climbing left turn to 3000 on heading 216° and LGC VORTAC R-062 to PAJVO/LGC 28 DME/RADAR and hold.

Simultaneous approach authorized.



D-ATIS <b>119.65</b>	ATLANTA APP CON <b>127.9 379.9</b>	ATLANTA TOWER					ALL RWYS	GND CON	ALL RWYS		
		8L-26R	8R-26L	9L-27R	9R-27L	10-28	(8L-26R,8R-26L)	(9L-27R,9R-27L)	10-28		
		<b>119.1</b>	<b>125.325</b>	<b>123.85</b>	<b>119.3</b>	<b>119.5</b>	<b>254.4</b>	<b>121.9</b>	<b>121.75</b>	<b>121.65</b>	<b>254.4</b>



ELEV 1026	TDZE 998
<p>HIRL all Rwy's TDZL/RCLS Rwy's 8L, 9R, 10, 26R, 27L and 28</p>	
<p>FAF to MAP 5.2 NM</p>	
Knots	60 90 120 150 180
Min:Sec	5:12 3:28 2:36 2:05 1:44

CATEGORY	A	B	C	D
S-ILS 28	1198/18		200 (200-1/2)	
S-LOC 28	1440/24	442 (500-1/2)	1440/45	442 (500-7/8)

SE-4, 16 APR 2026 to 14 MAY 2026

SE-4, 16 APR 2026 to 14 MAY 2026