

ATLANTA, GEORGIA

AL-26 (FAA)

# ILS PRM RWY 10 (CLOSE PARALLEL)

HARTSFIELD/JACKSON ATLANTA INTL (ATL)

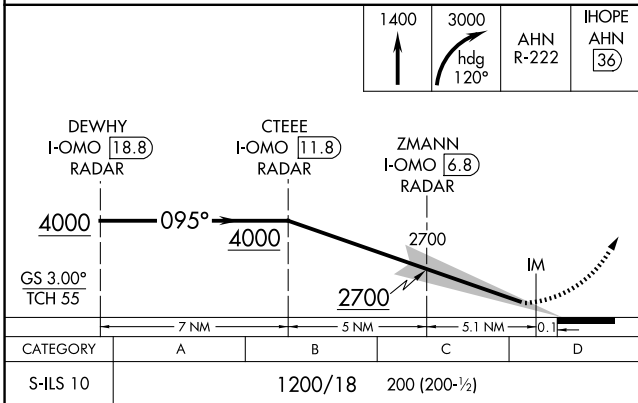
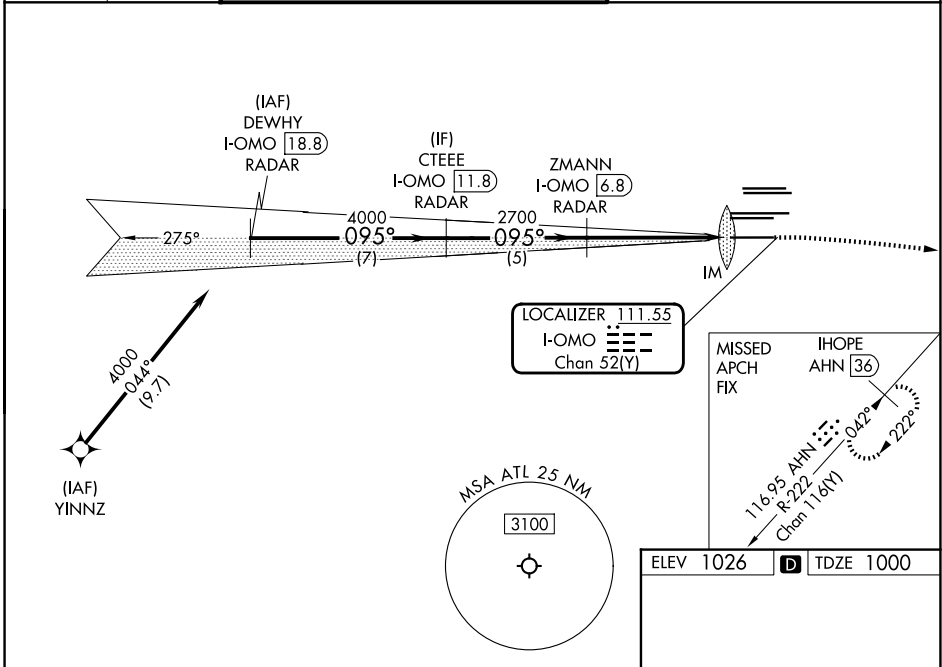
LOC/DME I-OMO <b>111.55</b> Chan <b>52 (Y)</b>	APP CRS <b>095°</b>	Rwy Ldg <b>9000</b> TDZE <b>1000</b> Apt Elev <b>1026</b>
--	------------------------	---

DME or RADAR required. RNP APCH - GPS from YINNZ.

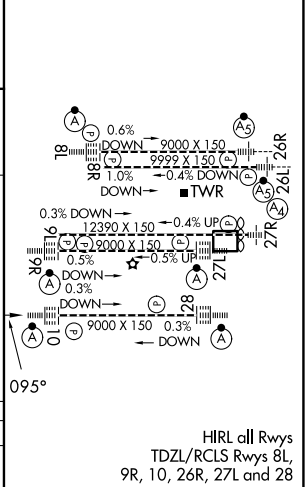
Simultaneous approach authorized. Procedure NA when glide slope not available (ILS procedures only). Dual VHF Comm required. See additional requirements on AAUP. Localizer not suitable for electronic rollout guidance.

ALSF-2  
MISSED APPROACH: Climb to 1400 then climbing right turn to 3000 on heading 120° and AHN R-222 to IHOPE/AHN 36 DME and hold.

D-ATIS <b>119.65</b>	ATLANTA APP CON <b>127.9 379.9</b>	ATLANTA TOWER 8L-26R 8R-26L 9L-27R 9R-27L 10-28 RWYS <b>119.1 125.325 123.85 119.3 119.5 254.4</b> <b>PRM 133.425</b>				ALL RWYS <b>121.9 121.75 121.65 254.4</b>	GND CON 10-28 RWYS <b>121.9 121.75 121.65 254.4</b>	ALL RWYS
-------------------------	---------------------------------------	--	--	--	--	--	---	----------



ELEV 1026	TDZE 1000
-----------	-----------



ATLANTA, GEORGIA  
Amdt 5 30DEC21

33°38'N-84°26'W

HARTSFIELD/JACKSON ATLANTA INTL (ATL)  
**ILS PRM RWY 10 (CLOSE PARALLEL)**

SE-4, 16 APR 2026 to 14 MAY 2026

SE-4, 16 APR 2026 to 14 MAY 2026

HIRL all Rwys  
TDZL/RCLS Rwys 8L,  
9R, 10, 26R, 27L and 28