

ATLANTA, GEORGIA

AL-26 (FAA)

ILS PRM RWY 28 (SA CAT I)

26078

LOC/DME I-PKU 111.75 Chan 54 (Y)	APP CRS 275°	Rwy Ldg TDZE Apt Elev	9000 998 1026
--	------------------------	-----------------------------	--

HARTSFIELD/JACKSON ATLANTA INTL (ATL)

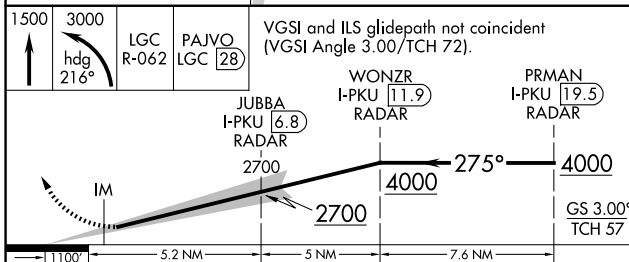
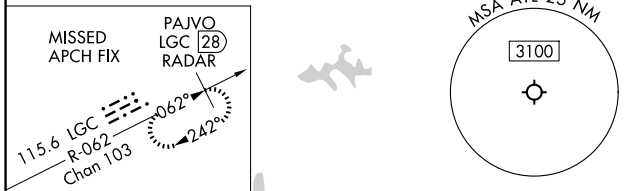
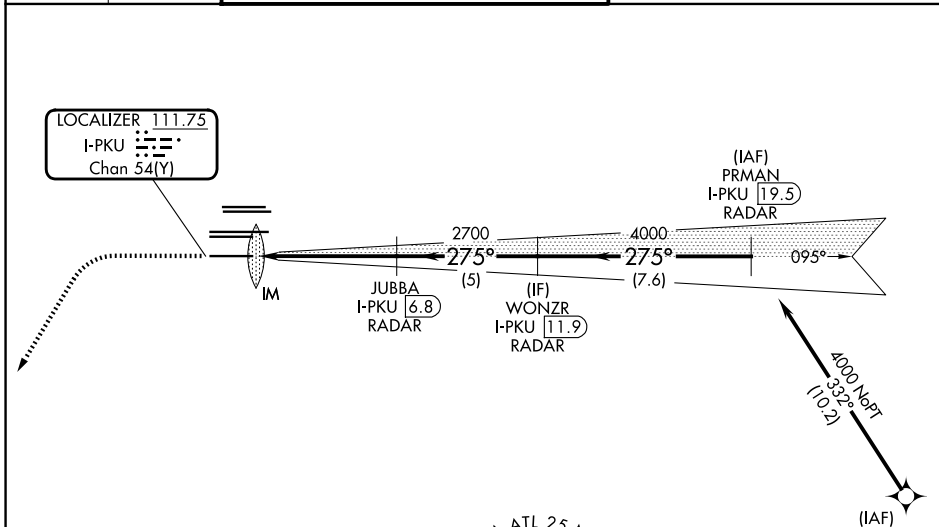
RNAV 1-GPS or RADAR required for procedure entry.
From TERII: RNAV 1-GPS required. DME or RADAR required.

ALSF-2

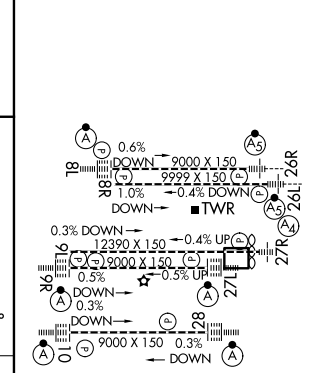
MISSED APPROACH: Climb to 1500 then climbing left turn to 3000 on heading 216° and LGC VORTAC R-062 to PAJVO/LGC 28 DME/RADAR and hold.

Simultaneous approach authorized. Use of FD or AP required during simultaneous operations. Dual VHF comm required. See additional requirements on AAUP. Requires specific OPSPEC, MSPEC, or LOA approval.

D-ATIS 119.65	ATLANTA APP CON 127.9 379.9	ATLANTA TOWER 8L-26R 8R-26L 9L-27R 9R-27L 10-28 RWYS 119.1 125.325 123.85 119.3 119.5 254.4 PRM 133.425	ALL RWYS (8L-26R,8R-26L) (9L-27R,9R-27L) 10-28 121.9 121.75 121.65 254.4
-------------------------	---------------------------------------	--	---



ELEV 1026	D TDZE 998
-----------	-------------------



SA CATEGORY I ILS - SPECIAL AIRCREW & AIRCRAFT CERTIFICATION REQUIRED

RA 264/14 150 DA 1148

HIRT all Rwys
TDZL/RCLS Rwys 8L, 9R, 10, 26R, 27L and 28

ATLANTA, GEORGIA
Amdt 5 07OCT21

33°38'N-84°26'W

HARTSFIELD/JACKSON ATLANTA INTL (ATL)

ILS PRM RWY 28 (SA CAT I) (CLOSE PARALLEL)

SE-4, 16 APR 2026 to 14 MAY 2026

SE-4, 16 APR 2026 to 14 MAY 2026