

**ILS PRM RWY 9R (SA CAT I)**  
**(CLOSE PARALLEL)**

HARTSFIELD/JACKSON ATLANTA INTL (ATL)

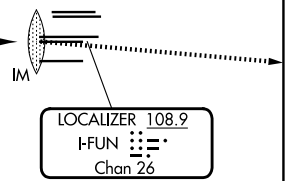
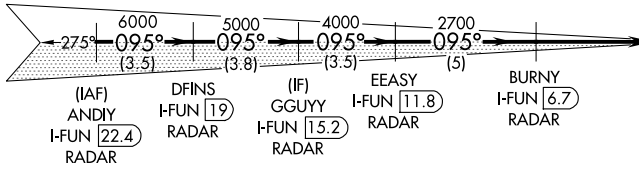
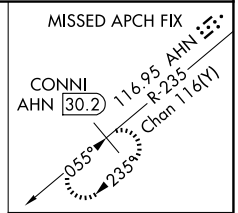
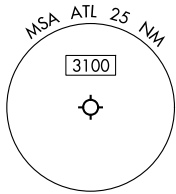
LOC/DME I-FUN <b>108.9</b> Chan <b>26</b>	APP CRS <b>095°</b>	Rwy Ldg <b>9000</b> TDZE <b>1026</b> Apt Elev <b>1026</b>
---	------------------------	---

**RADAR** required for procedure entry, DME.  
 Requires specific OPSPEC, MSPEC, or LOA approval.  
 Simultaneous approach authorized. Use of FD or AP required during simultaneous operations. Dual VHF comm required.  
 See additional requirements on AAUP.

**ALSIF-2**  
 MISSED APPROACH: Climb to 4000 on heading 100° and AHN VOR/DME R-235 to CONNI/AHN 30.2 DME and hold.

D-ATIS <b>119.65</b>	ATLANTA APP CON <b>127.9 379.9</b>	ATLANTA TOWER 8L-26R 8R-26L 9L-27R 9R-27L 10-28 RWYS <b>119.1 125.325 123.85 119.3 119.5 254.4</b> PRM <b>132.55</b>	ALL RWYS <b>121.9 121.75 121.65 254.4</b>
-------------------------	---------------------------------------	---	--

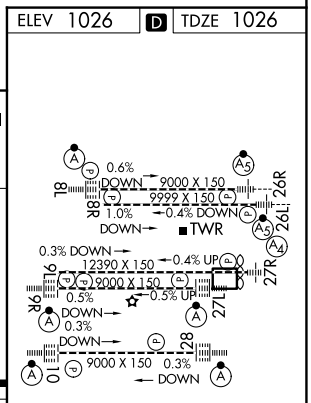
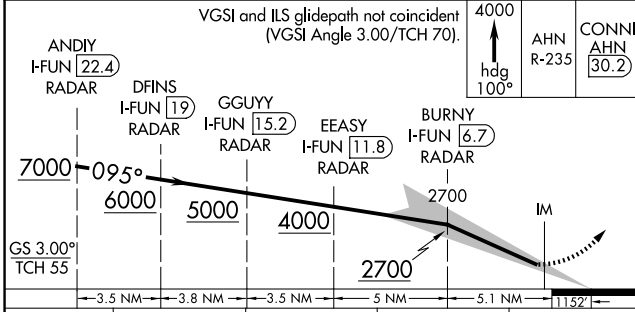
GND CON <b>121.9</b>	ALL RWYS <b>121.75 121.65 254.4</b>
-------------------------	--



SE-4, 16 APR 2026 to 14 MAY 2026

SE-4, 16 APR 2026 to 14 MAY 2026

ELEV 1026	<b>D</b> TDZE 1026
-----------	--------------------



CATEGORY	A	B	C	D
5-ILS 9R				

**SA CATEGORY I ILS - SPECIAL AIRCREW & AIRCRAFT CERTIFICATION REQUIRED**

HIRL all Rwys  
 TDZL/RCLS Rwys 8L, 9R, 10, 26R, 27L and 28