

RNAV 1 - DME/DME/IRU or GPS.
RADAR required.

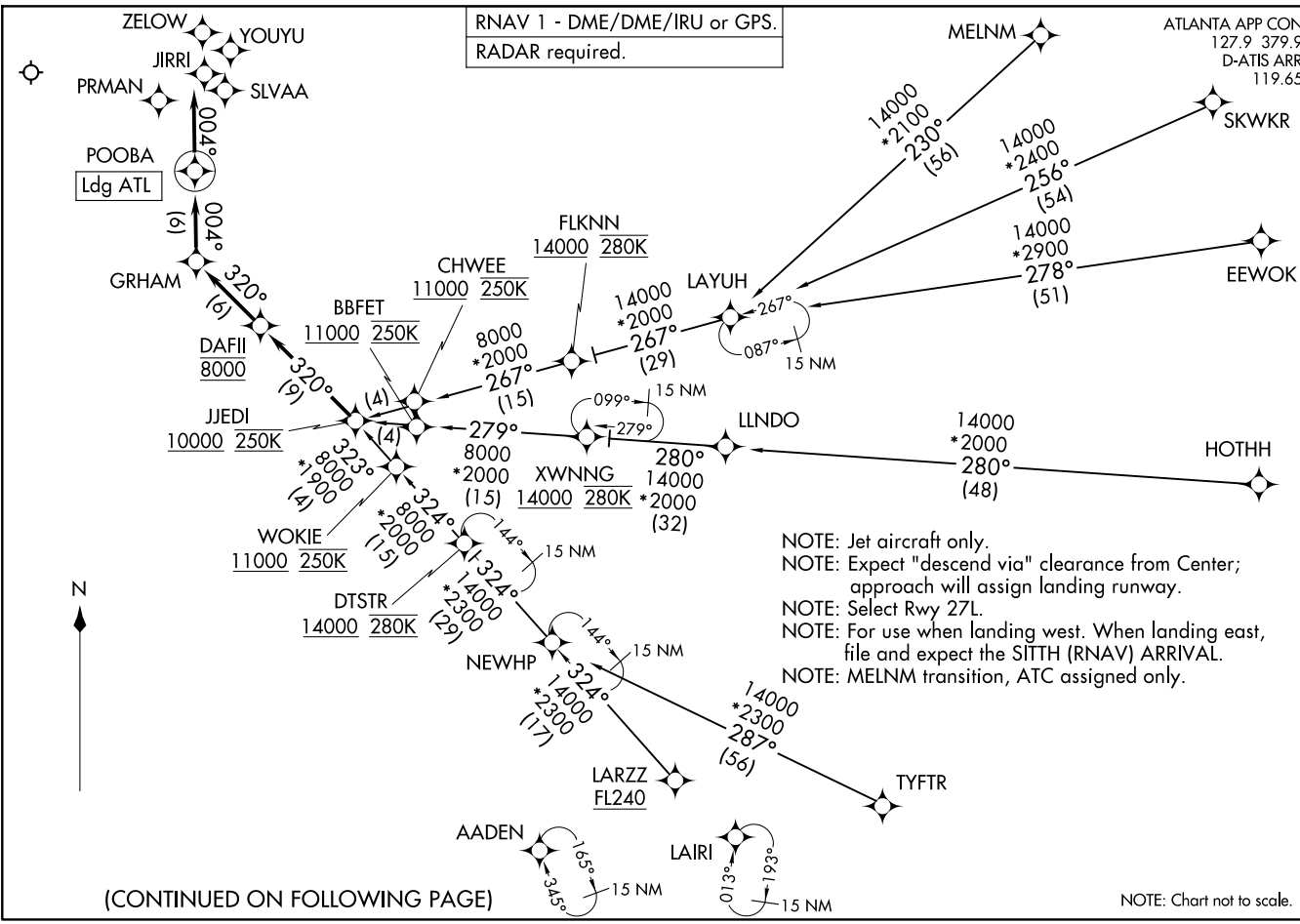
ATLANTA APP CON
127.9 379.9
D-ATIS ARR
119.65

JJEDI FOUR ARRIVAL (RNAV)
(JJEDI, JJEDI4) 27NOV25

HARTSFIELD/JACKSON ATLANTA INTL (ATL)
ATLANTA, GEORGIA

(JJEDI, JJEDI4) 25331
JJEDI FOUR ARRIVAL (RNAV)

AT-26 (FAA) HARTSFIELD/JACKSON ATLANTA INTL (ATL)
ATLANTA, GEORGIA



(CONTINUED ON FOLLOWING PAGE)

NOTE: Chart not to scale.

ARRIVAL ROUTE DESCRIPTION

EEWOK TRANSITION (EEWOK.JJEDI4)

HOTHH TRANSITION (HOTHH.JJEDI4)

LARZZ TRANSITION (LARZZ.JJEDI4)

LAYUH TRANSITION (LAYUH.JJEDI4)

MELNM TRANSITION (MELNM.JJEDI4)

SKWKR TRANSITION (SKWKR.JJEDI4)

TYFTR TRANSITION (TYFTR.JJEDI4)

From JJEDI on track 320° to cross DAFII at 8000, then on track 320° to GRHAM, then on track 004° to POOBA, then on track 004°. Expect RADAR vectors to final approach course.

LOST COMMUNICATIONS:

ASSIGNED RUNWAY 28 OR RUNWAY NOT ASSIGNED: Cross JJEDI at or above 10000; cross DAFII at 8000; cross POOBA at 5000; after POOBA descend to 3000 and proceed direct PRMAN; proceed on the ILS or RNAV RWY 28 approach.

ASSIGNED RUNWAY 27L: Cross JJEDI at or above 10000; cross DAFII at 8000; cross POOBA at 6000; after POOBA proceed direct SLVAA and proceed on the ILS or RNAV RWY 27L approach.

ASSIGNED RUNWAY 27R: Cross JJEDI at or above 10000; cross DAFII at 8000; cross POOBA at 6000; after POOBA proceed direct YOUYU and proceed on the ILS or RNAV RWY 27R approach.

ASSIGNED RUNWAY 26L: Cross JJEDI at or above 10000; cross DAFII at 8000; cross POOBA at 6000; after POOBA proceed direct JIRRI and proceed on the ILS or RNAV RWY 26L approach.

ASSIGNED RUNWAY 26R: Cross JJEDI at or above 10000; cross DAFII at 8000; cross POOBA at 6000; after POOBA proceed direct ZELOW and proceed on the ILS or RNAV RWY 26R approach.

SE-4, 16 APR 2026 to 14 MAY 2026

SE-4, 16 APR 2026 to 14 MAY 2026