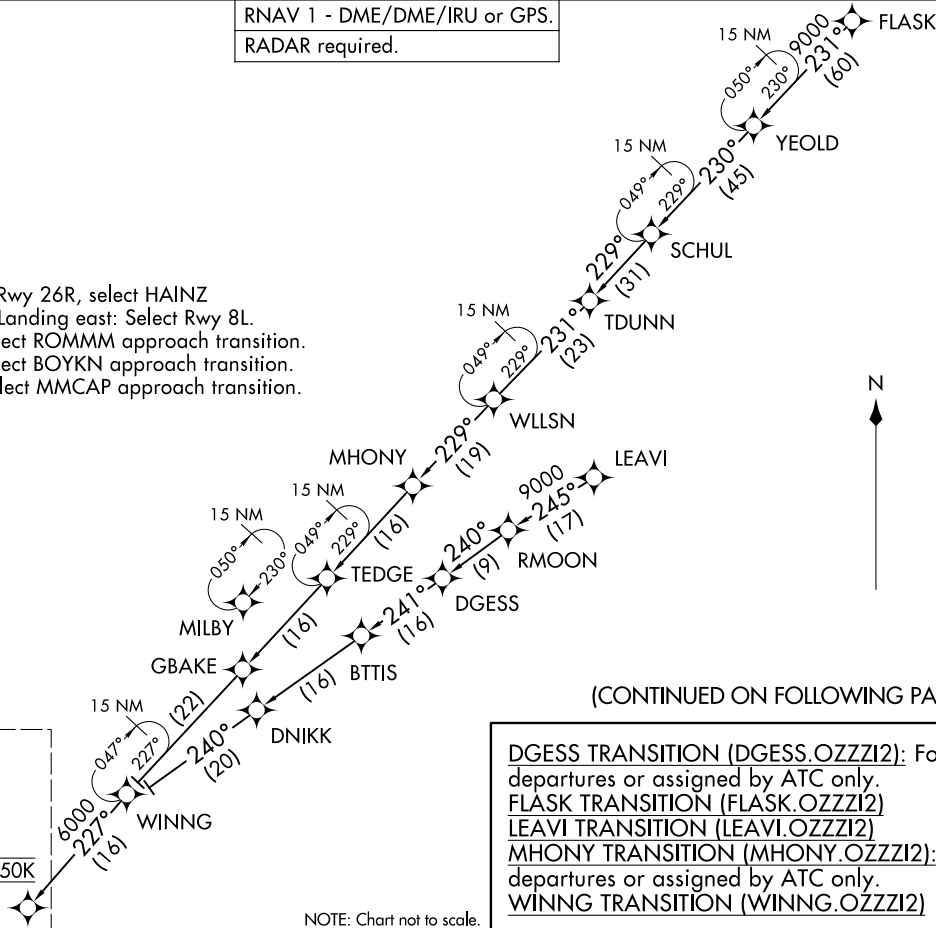


ATLANTA APP CON
128.525 379.9
D-ATIS ARR
119.65

RNAV 1 - DME/DME/IRU or GPS.

RADAR required.

- NOTE: Jet aircraft only.
- NOTE: Landing west: Select Rwy 26R, select HAINZ approach transition; Landing east: Select Rwy 8L.
- NOTE: Landing Rwy 27L: Select ROMMM approach transition.
- NOTE: Landing Rwy 26L: Select BOYKN approach transition.
- NOTE: Landing Rwy 27R: Select MMCAP approach transition.



(CONTINUED ON FOLLOWING PAGE)

See following page
for arrival route.

OZZI
Landing East: Expect 14000
Landing West: Expect 12000 and 250K

DGESS TRANSITION (DGESS.OZZI2): For GSP departures or assigned by ATC only.
FLASK TRANSITION (FLASK.OZZI2)
LEAVI TRANSITION (LEAVI.OZZI2)
MHONY TRANSITION (MHONY.OZZI2): For AVL departures or assigned by ATC only.
WINNG TRANSITION (WINNG.OZZI2)

NOTE: Chart not to scale.

OZZI TWO ARRIVAL (RNAV) Transition Routes
HARTSFIELD/JACKSON ATLANTA INTL (ATL)
ATLANTA, GEORGIA
OZZI2 27NOV25

OZZI TWO ARRIVAL (RNAV) Transition Routes
ATLANTA, GEORGIA
AT-26 (FAA) HARTSFIELD/JACKSON ATLANTA INTL (ATL)
OZZI2 25331

OZZI TWO ARRIVAL (RNAV)

ARRIVAL ROUTE DESCRIPTION

From OZZI on track 227° to HAARY.

LANDING RUNWAYS 8L/R: From HAARY on track 216° to KILRR, then on track 275° to GAASS, then on track 275° to KLOWD, then on track 275° to KUNFU, then on track 275° to TRAPE, then on track 275° to SNEVE, then on track 275°. Expect RADAR vectors to final approach course.

LANDING RUNWAYS 9L/R, 10: From HAARY on track 216° to KILRR, then on track 216° to FRYES, then on track 275° to SHURT, then on track 275° to REMAC, then on track 275° to DACTL, then on track 275° to STUMP, then on track 275°. Expect RADAR vectors to final approach course.

LANDING RUNWAY 26L: From HAARY on track 183° to cross CALLA at 9000, then on track 183° to cross POSEY at or above 8000, then on track 207° to cross JIRRI at or above 5000, then on track 275° to cross BOYKN at or above 5000. Expect ILS RWY 26L approach.

LANDING RUNWAY 26R: From HAARY on track 183° to cross CALLA at 9000, then on track 183° to cross POSEY at or above 8000, then on track 208° to cross ZELow at or above 5000, then on track 275° to cross HAINZ at or above 5000. Expect ILS RWY 26R approach.

LANDING RUNWAY 27L: From HAARY on track 183° to cross CALLA at 9000, then on track 183° to cross POSEY at or above 8000, then on track 201° to cross SLVAA at or above 7000, then on track 275° to cross ROMMM at or above 6000. Expect ILS RWY 27L approach.

LANDING RUNWAY 27R: From HAARY on track 183° to cross CALLA at 9000, then on track 183° to cross POSEY at or above 8000, then on track 198° to cross YOUYU at or above 7000, then on track 275° to cross MMCAP at or above 6000. Expect ILS RWY 27R approach.

LANDING RUNWAY 28: From HAARY on track 183° to cross CALLA at 9000, then on track 183° to cross POSEY at or above 8000, then on track 180° to cross BLUFF at 8000, then on track 180°. Expect RADAR vectors to final approach course.

LOST COMMUNICATIONS:

LANDING EAST: ASSIGNED RUNWAY 8L OR RUNWAY NOT ASSIGNED: Cross OZZI at 14000; cross GAASS at 12000, cross KUNFU at or above 7000; cross SNEVE at 5000; after SNEVE turn left direct LARII and proceed on the ILS or RNAV RWY 8L approach.

LANDING EAST: ASSIGNED RUNWAY 8R: Cross OZZI at 14000; cross GAASS at 12000; cross KUNFU at or above 7000; cross SNEVE at 5000; after SNEVE turn left direct GPEAT and proceed on the ILS or RNAV RWY 8R approach.

LANDING EAST: ASSIGNED RUNWAY 9L: Cross OZZI at 14000; cross FRYES at 12000; cross REMAC at or above 7000; cross STUMP at 4000; after STUMP turn right direct RYENN and proceed on the ILS or RNAV RWY 9L approach.

LANDING EAST: ASSIGNED RUNWAY 9R: Cross OZZI at 14000; cross FRYES at 12000; cross REMAC at or above 7000; cross STUMP at 4000; after STUMP turn right direct ANDIY and proceed on the ILS or RNAV RWY 9R approach.

LANDING EAST: ASSIGNED RUNWAY 10: Cross OZZI at 14000; cross FRYES at 12000; cross REMAC at or above 7000; cross STUMP at 4000; after STUMP turn right direct DEWHY and proceed on the ILS or RNAV RWY 10 approach.

LANDING WEST: ASSIGNED RUNWAY 28: Cross OZZI at 14000; cross CALLA at 9000; cross POSEY at or above 8000; cross BLUFF at 8000; after BLUFF descend to 6000 and proceed direct PRMAN; proceed on the ILS or RNAV RWY 28 approach.

OZZI TWO ARRIVAL (RNAV)

SE-4, 16 APR 2026 to 14 MAY 2026

SE-4, 16 APR 2026 to 14 MAY 2026