

WAAS CH 56300 W26A	APP CRS 275°	Rwy Ldg 9999 TDZE 996 Apt Elev 1026
--	------------------------	--

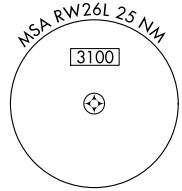
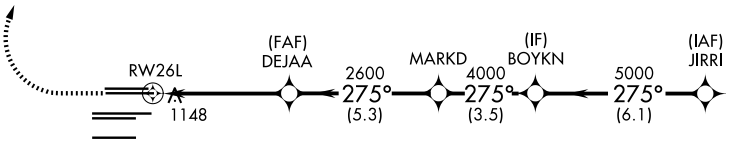
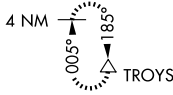
RNAV (GPS) RWY 26L
HARTSFIELD/JACKSON ATLANTA INTL (ATL)

▽ For uncompensated Baro-VNAV systems, LNAV/VNAV NA below -7°C (20°F) or above 54°C (130°F). DME/DME RNP-0.3 NA. For inop MALSR, increase LPV all Cats visibility to RVR 4500, LNAV/VNAV all Cats visibility to RVR 6000. Simultaneous approach authorized with Rwy 27L or 27R or 28. LNAV procedure NA during simultaneous operations. Use of FD or AP providing RNAV track guidance required during simultaneous operations.

MALSR

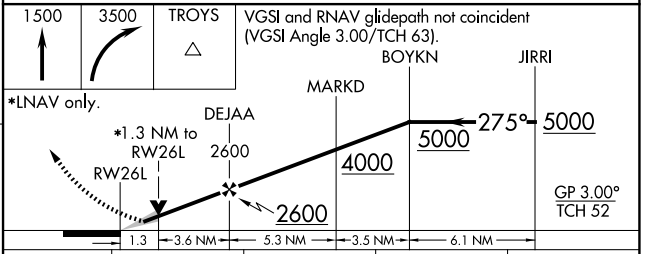
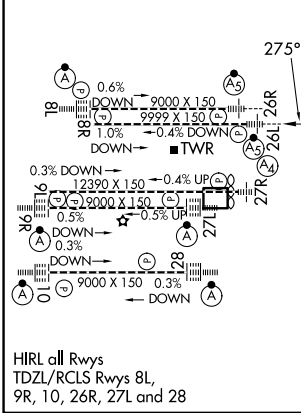
MISSED APPROACH:
Climb to 1500 then climbing right turn to 3500 direct TROYS and hold.

D-ATIS 119.65	ATLANTA APP CON 127.9 379.9	ATLANTA TOWER 8L-26R 8R-26L 9L-27R 9R-27L 10-28 RWYS					ALL RWYS 121.9 121.75 121.65 254.4	GND CON 121.9 121.75 121.65 254.4	ALL RWYS
-------------------------	---------------------------------------	---	--	--	--	--	--	---	----------



ELEV 1026	D	TDZE 996
-----------	----------	----------

RADAR REQUIRED



CATEGORY	A	B	C	D
LPV DA		1281/24	285 (300-½)	
LNAV/VNAV DA		1360/35	364 (400-⅓)	
LNAV MDA	1460/24	464 (500-½)	1460/50	464 (500-1)

SE-4, 16 APR 2026 to 14 MAY 2026

SE-4, 16 APR 2026 to 14 MAY 2026