

WAAS CH <b>48800</b> <b>W08D</b>	APP CRS <b>095°</b>	Rwy Ldg TDZE <b>1024</b> Apt Elev <b>1026</b>	<b>9999</b>
--	------------------------	---	-------------

# RNAV (GPS) RWY 8R

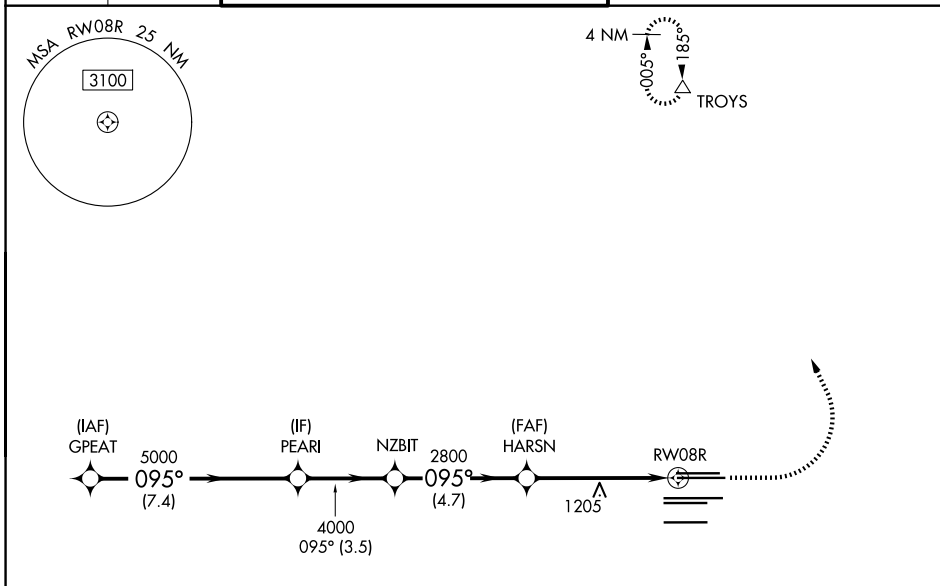
HARTSFIELD/JACKSON ATLANTA INTL (ATL)

RNP APCH - GPS.  
RADAR required.

▼ For uncompensated Baro-VNAV systems, LNAV/VNAV NA below -5°C or above 54°C. Simultaneous approach authorized with Rwy 9L or 9R or 10. LNAV procedure NA during simultaneous operations. Use of FD or AP providing RNAV track guidance required during simultaneous operations.

MISSED APPROACH:  
Climb to 1500 then climbing left turn to 3500 direct TROYS and hold.

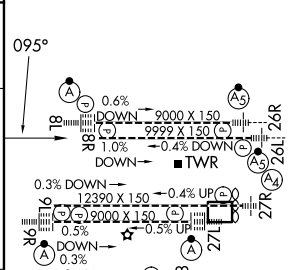
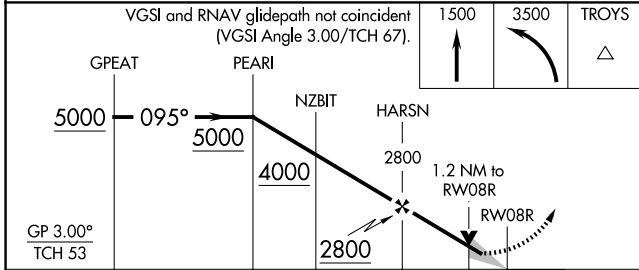
D-ATIS <b>119.65</b>	ATLANTA APP CON <b>127.9 379.9</b>	ATLANTA TOWER					ALL RWYS	GND CON	ALL RWYS
		8L-26R	8R-26L	9L-27R	9R-27L	10-28	(8L-26R, 8R-26L)	(9L-27R, 9R-27L)	10-28
		<b>119.1</b>	<b>125.325</b>	<b>123.85</b>	<b>119.3</b>	<b>119.5 254.4</b>	<b>121.9</b>	<b>121.75</b>	<b>121.65 254.4</b>



SE-4, 16 APR 2026 to 14 MAY 2026

SE-4, 16 APR 2026 to 14 MAY 2026

ELEV 1026	TDZE 1024
-----------	-----------



CATEGORY	A	B	C	D
LPV DA		1282/40	258 (300-¾)	
LNAV/VNAV DA		1440/60	416 (500-1¼)	
LNAV MDA	1460/55	436 (500-1)	1460-1¼	436 (500-1¼)

HIRL all Rwys  
TDZL/RCLS Rwys 8L,  
9R, 10, 26R, 27L and 28