


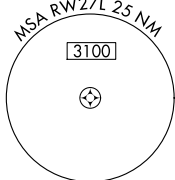
RNAV (GPS) PRM RWY 27L (SIMULTANEOUS CLOSE PARALLEL) HARTSFIELD/JACKSON ATLANTA INTL (ATL)

WAAS CH 65700 W27A	APP CRS 275°	Rwy Ldg 8865 TDZE 999 Apt Elev 1026
--	------------------------	--

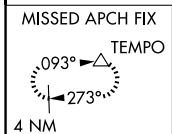
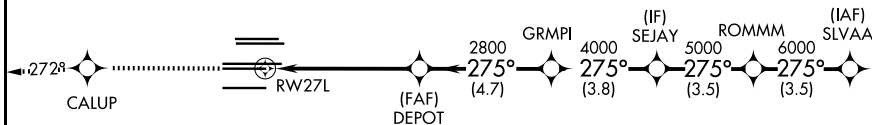
For uncompensated Baro-VNAV systems, LNAV/VNAV NA below -7°C (20°F) or above 54°C (130°F). DME/DME RNP-0.3 NA. Simultaneous close parallel approach authorized with ILS PRM and RNAV PRM Rwy 26R or 26L or 28, or Rwys 26R and 28, or Rwys 26L and 28. Dual VHF Comm required. Use of FD or AP providing RNAV track guidance required during simultaneous operations. See additional requirements on AAUP.

ALSF-2

 MISSED APPROACH: Climb to 4000 direct CALUP and on track 272° to TEMPO and hold.

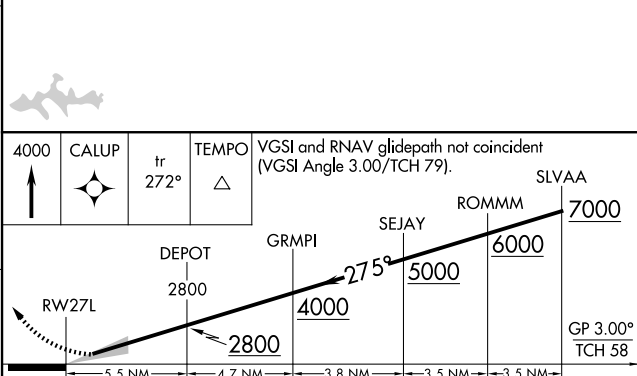
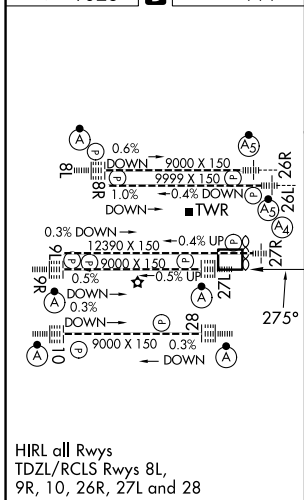
D-ATIS 119.65	ATLANTA APP CON 127.9 379.9	ATLANTA TOWER 8L-26R 8R-26L 9L-27R 9R-27L 10-28 RWYS 119.1 125.325 123.85 119.3 119.5 254.4 PRM 132.55	ALL RWYS (8L-26R, 8R-26L) (9L-27R, 9R-27L) 10-28 121.9 121.75 121.65 254.4
-------------------------	---------------------------------------	---	---



RADAR REQUIRED



ELEV 1026	D	TDZE 999
------------------	----------	-----------------



CATEGORY	A	B	C	D
LPV DA		1199/18	200 (200-1/2)	
LNAV/VNAV DA		1528-1 3/8	529 (600-1 3/8)	

RNAV (GPS) PRM RWY 27L (SIMULTANEOUS CLOSE PARALLEL)

SE-4, 16 APR 2026 to 14 MAY 2026

SE-4, 16 APR 2026 to 14 MAY 2026