

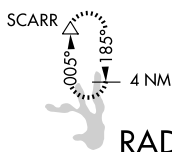
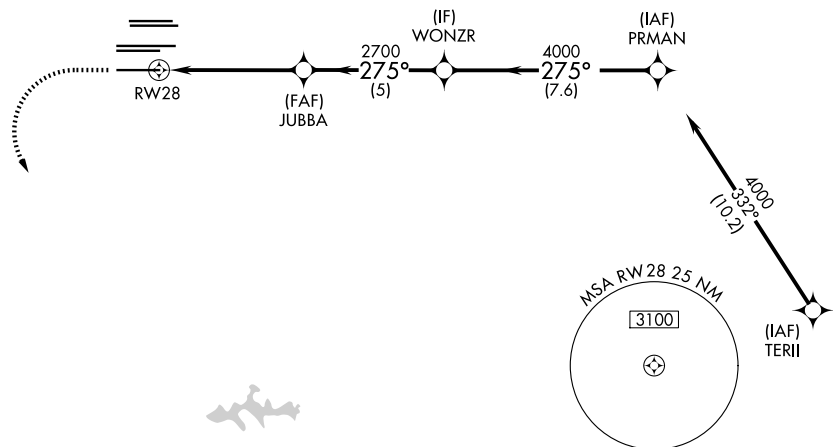
# RNAV (GPS) PRM Y RWY 28 (SIMULTANEOUS CLOSE PARALLEL) HARTSFIELD/JACKSON ATLANTA INTL (ATL)

WAAS CH <b>61299</b> <b>W28A</b>	APP CRS <b>275°</b>	Rwy Ldg TDZE <b>998</b> Apt Elev <b>1026</b>
--	------------------------	--

For uncompensated Baro-VNAV systems, LNAV/VNAV NA below -7°C (20°F) or above 54°C (130°F). DME/DME RNP-0.3 NA. Simultaneous close parallel approach authorized with ILS PRM and RNAV PRM Rwy 26R or 26L or 27R or 27L, or Rwys 26R and 27R, or Rwys 26R and 27L, or Rwys 26L and 27R, or Rwys 26L and 27L. Use of FD or AP providing RNAV track guidance required during simultaneous operations. Dual VHF Comm required. See additional requirements on AAUP.

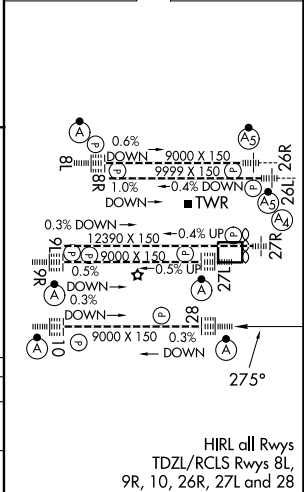
ALSF-2  
MISSED APPROACH: Climb to 1500 then climbing left turn to 3000 direct SCARR and hold.

D-ATIS <b>119.65</b>	ATLANTA APP CON <b>127.9 379.9</b>	ATLANTA TOWER 8L-26R 8R-26L 9L-27R 9R-27L 10-28 RWYS <b>119.1 125.325 123.85 119.3 119.5 254.4</b> PRM <b>133.425</b>	ALL RWYS (8L-26R,8R-26L) (9L-27R,9R-27L) 10-28 RWYS <b>121.9 121.75 121.65 254.4</b>	GND CON <b>121.75 121.65 254.4</b>
-------------------------	---------------------------------------	--	--	---------------------------------------



ELEV 1026 **D** TDZE 998

1500	3000	SCARR	
↑	↘	△	
RWY 28		JUBBA	WONZR
2700		4000	4000
2700		275°	275°
5.2 NM		5 NM	7.6 NM
CATEGORY	A	B	C
LPV DA		1198/18	200 (200-½)
LNAV/VNAV DA		1250/24	252 (300-½)
GP 3.00° TCH 57'			



HIRL all Rwys  
TDZL/RCLS Rwys 8L,  
9R, 10, 26R, 27L and 28

SE-4, 16 APR 2026 to 14 MAY 2026

SE-4, 16 APR 2026 to 14 MAY 2026

# RNAV (GPS) PRM Y RWY 28 (SIMULTANEOUS CLOSE PARALLEL)