

RNAV (RNP) Z RWY 8L HARTSFIELD/JACKSON ATLANTA INTL (ATL)

APP CRS	Rwy Ldg	8800
095°	TDZE	1015
	Apt Elev	1026

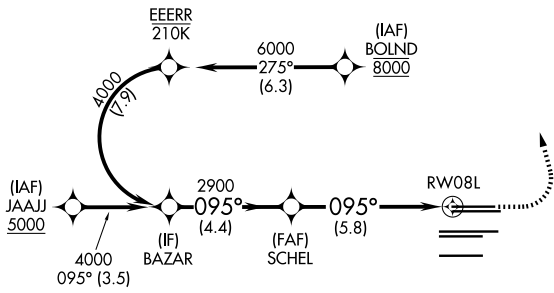
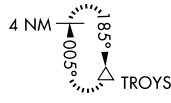
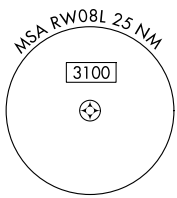
RNP AR APCH - GPS.

▼ For uncompensated Baro-VNAV systems, procedure NA below -5°C or above 54°C. For inop ALS, increase RNP 0.15 all Cats RVR to 5500. Simultaneous approach authorized. Arrival from BOLND NA during simultaneous triple approaches.

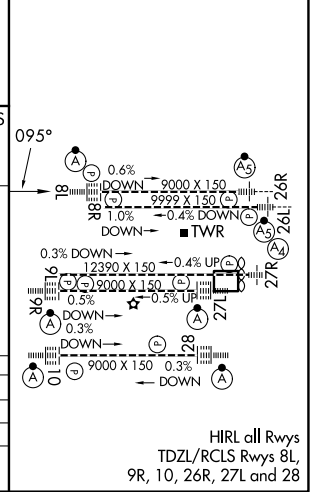
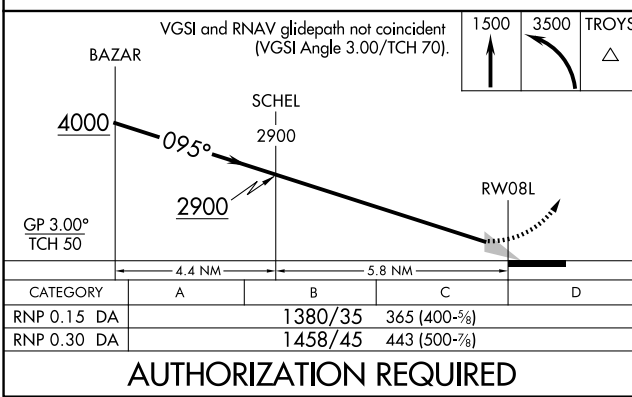
ALS-2

MISSED APPROACH: Climb to 1500 then dimbing left turn to 3500 direct TROYS and hold.

D-ATIS	ATLANTA APP CON	ATLANTA TOWER					ALL RWYS	GND CON	ALL RWYS
119.65	127.9 379.9	8L-26R	8R-26L	9L-27R	9R-27L	10-28	(8L-26R,8R-26L)	(9L-27R,9R-27L)	10-28
		119.1	125.325	123.85	119.3	119.5	254.4	121.9	121.75 121.65 254.4



ELEV 1026	D	TDZE 1015
-----------	----------	-----------



SE-4, 16 APR 2026 to 14 MAY 2026

SE-4, 16 APR 2026 to 14 MAY 2026