

WAAS CH <b>61000</b> <b>W26B</b>	APP CRS <b>275°</b>	Rwy Ldg TDZE <b>990</b> Apt Elev <b>1026</b>
--	------------------------	--

# RNAV (GPS) Y RWY 26R

HARTSFIELD/JACKSON ATLANTA INTL (ATL)

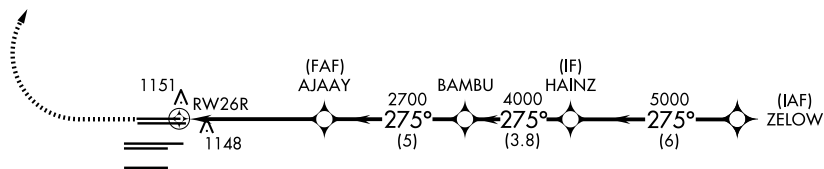
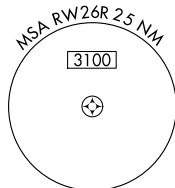
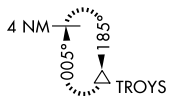
**▽** For uncompensated Baro-VNAV systems, LNAV/VNAV NA below -7°C (20°F) or above 54°C (130°F). DME/DME RNP-0.3 NA. Simultaneous approach authorized with Rwy 27R or 27L or 28, or Rwys 27R and 28. LNAV procedure NA during simultaneous operations. Use of FD or AP providing RNAV track guidance required during simultaneous operations.

MALSR



**MISSED APPROACH:**  
Climb to 1500 then climbing right turn to 3500 direct TROYS and hold.

D-ATIS <b>119.65</b>	ATLANTA APP CON <b>127.9 379.9</b>	ATLANTA TOWER 8L-26R 8R-26L 9L-27R 9R-27L 10-28 RWYS <b>119.1 125.325 123.85 119.3 119.5 254.4</b>				ALL RWYS <b>121.9</b>	GND CON (8L-26R,8R-26L) (9L-27R,9R-27L) 10-28 RWYS <b>121.75 121.65 254.4</b>	ALL RWYS
-------------------------	---------------------------------------	--	--	--	--	--------------------------	---	----------

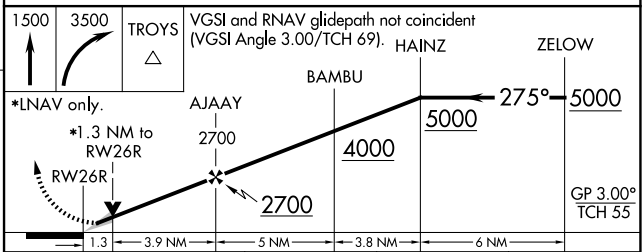
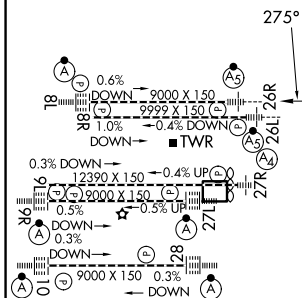


SE-4, 16 APR 2026 to 14 MAY 2026

SE-4, 16 APR 2026 to 14 MAY 2026

ELEV 1026	<b>D</b>	TDZE 990
-----------	----------	----------

## RADAR REQUIRED



CATEGORY	A	B	C	D
LPV DA		1190/18	200 (200-½)	
LNAV/VNAV DA		1426/50	436 (500-1)	
LNAV MDA	1460/24	470 (500-½)	1460/50	470 (500-1)

HIRL all Rwys  
TDZL/RCLS Rwys 8L,  
9R, 10, 26R, 27L and 28