

WAAS CH 61299 W28A	APP CRS 275°	Rwy Ldg TDZE 998 Apt Elev 1026	9000
--	------------------------	--	-------------

RNAV (GPS) Y RWY 28

HARTSFIELD/JACKSON ATLANTA INTL (ATL)

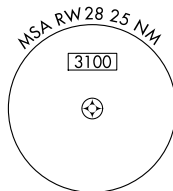
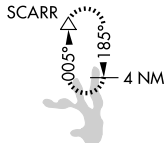
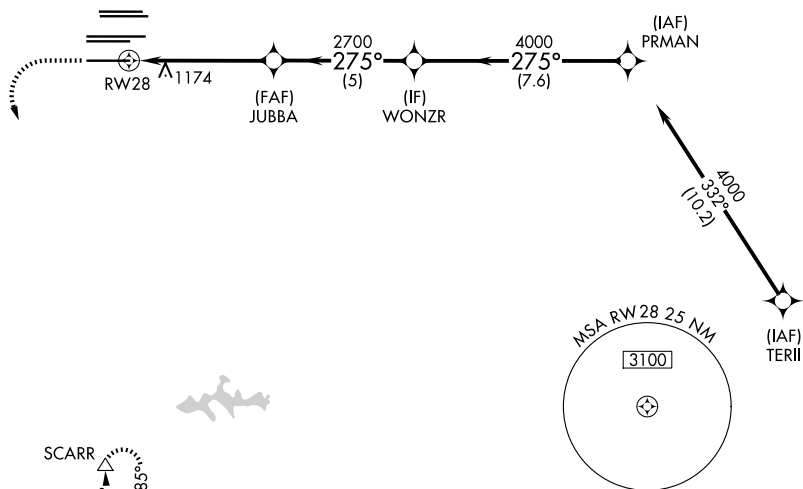
▼ For uncompensated Baro-VNAV systems, LNAV/VNAV NA below -7°C (20°F) or above 54°C (130°F). Simultaneous approach authorized with Rwy 26R or 26L or 27R, or Rwys 26R and 27R. DME/DME RNP-0.3 NA. LNAV procedure NA during simultaneous operations. Use of FD or AP providing RNAV track guidance required during simultaneous operations.

ALSf-2

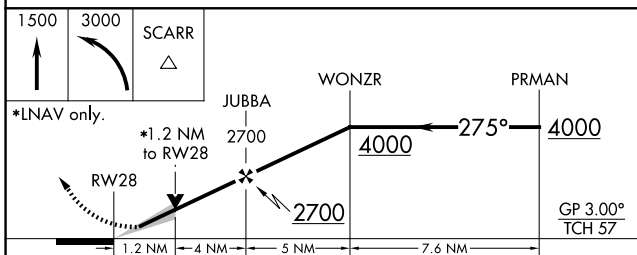


MISSED APPROACH:
Climb to 1500 then climbing left turn to 3000 direct SCARR and hold.

D-ATIS 119.65	ATLANTA APP CON 127.9 379.9	ATLANTA TOWER 8L-26R 8R-26L 9L-27R 9R-27L 10-28 RWYS				ALL RWYS 119.1 125.325 123.85 119.3 119.5 254.4	GND CON 121.9	ALL RWYS 121.75 121.65 254.4
-------------------------	---------------------------------------	---	--	--	--	---	-------------------------	--



RADAR REQUIRED



CATEGORY	A	B	C	D
LPV DA		1198/18	200 (200-½)	
LNAV/VNAV DA		1250/24	252 (300-½)	
LNAV MDA	1440/24	442 (500-½)	1440/45	442 (500-¾)

ELEV 1026 **D** TDZE 998

HIRL all Rwys
TDZL/RCLS Rwys 8L, 9R, 10, 26R, 27L and 28

SE-4, 16 APR 2026 to 14 MAY 2026

SE-4, 16 APR 2026 to 14 MAY 2026