

SITHH THREE ARRIVAL (RNAV)
(SITHH.SITHH3) 27NOV25

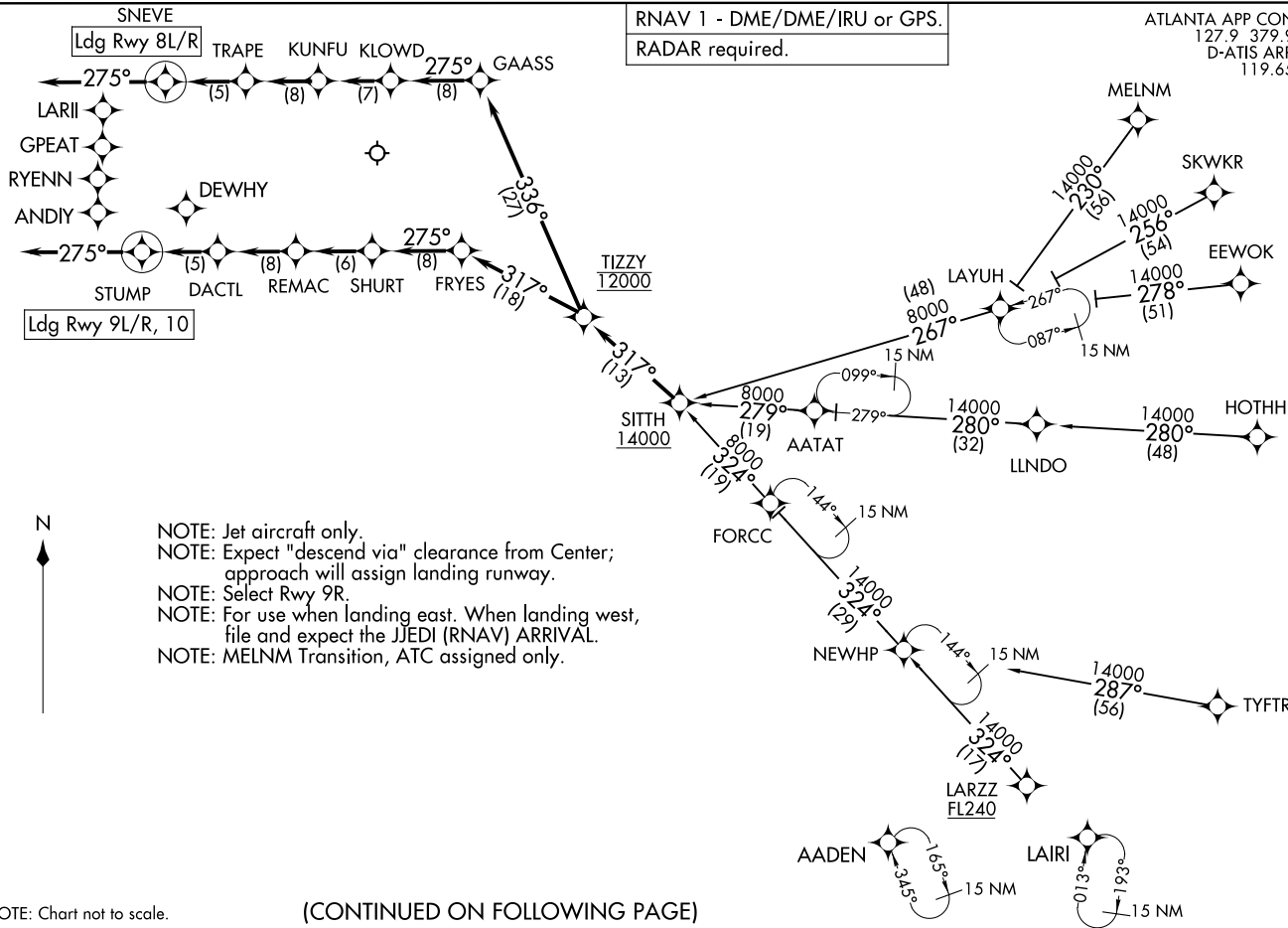
HARTSFIELD/JACKSON ATLANTA INTL (ATL)
ATLANTA, GEORGIA

(SITHH.SITHH3) 25331
SITHH THREE ARRIVAL (RNAV)

HARTSFIELD/JACKSON ATLANTA INTL (ATL)
ATLANTA, GEORGIA

RNAV 1 - DME/DME/IRU or GPS.
RADAR required.

ATLANTA APP CON
127.9 379.9
D-ATIS ARR
119.65



- NOTE: Jet aircraft only.
- NOTE: Expect "descend via" clearance from Center; approach will assign landing runway.
- NOTE: Select Rwy 9R.
- NOTE: For use when landing east. When landing west, file and expect the JJEDI (RNAV) ARRIVAL.
- NOTE: MELNM Transition, ATC assigned only.

NOTE: Chart not to scale.

(CONTINUED ON FOLLOWING PAGE)

ARRIVAL ROUTE DESCRIPTION

EEWOK TRANSITION (EEWOK.SITTH3)

HOTHH TRANSITION (HOTHH.SITTH3)

LARZZ TRANSITION (LARZZ.SITTH3)

LAYUH TRANSITION (LAYUH.SITTH3)

MELNM TRANSITION (MELNM.SITTH3)

SKWKR TRANSITION (SKWKR.SITTH3)

TYFTR TRANSITION (TYFTR.SITTH3)

From SITTH on track 317° to cross TIZZY at 12000.

LANDING RUNWAYS 8L/R: From TIZZY on track 336° to GAASS, then on track 275° to KLOWD, then on track 275° to KUNFU, then on track 275° to TRAPE, then on track 275° to SNEVE, then on track 275°. Expect RADAR vectors to final approach course.

LANDING RUNWAYS 9L/R, 10: From TIZZY on track 317° to FRYES, then on track 275° to SHURT, then on track 275° to REMAC, then on track 275° to DACTL, then on track 275° to STUMP, then on track 275°. Expect RADAR vectors to final approach course.

LOST COMMUNICATIONS

ASSIGNED RUNWAY 10 OR RUNWAY NOT ASSIGNED: Cross SITTH at or above 14000; cross TIZZY at 12000; cross FRYES at 12000; cross REMAC at or above 7000; cross STUMP at 4000; after STUMP turn right direct DEWHY and proceed on the ILS or RNAV RWY 10 approach.

ASSIGNED RUNWAY 9L: Cross SITTH at or above 14000; cross TIZZY at 12000; cross FRYES at 12000; cross REMAC at or above 7000; cross STUMP at 4000; after STUMP turn right direct RYENN and proceed on the ILS or RNAV RWY 9L approach.

ASSIGNED RUNWAY 9R: Cross SITTH at or above 14000; cross TIZZY at 12000; cross FRYES at 12000; cross REMAC at or above 7000; cross STUMP at 4000; after STUMP turn right direct ANDIY and proceed on the ILS or RNAV RWY 9R approach.

ASSIGNED RUNWAY 8L: Cross SITTH at or above 14000; cross TIZZY at 12000; cross GAASS at 12000, cross KUNFU at or above 7000; cross SNEVE at 5000; after SNEVE turn left direct LARII and proceed on the ILS or RNAV RWY 8L approach.

ASSIGNED RUNWAY 8R: Cross SITTH at or above 14000; cross TIZZY at 12000; cross GAASS at 12000, cross KUNFU at or above 7000; cross SNEVE at 5000; after SNEVE turn left direct GPEAT and proceed on the ILS or RNAV RWY 8R approach.