

APP CRS	Rwy Ldg	6001
262°	TDZE	139
	Apt Elev	146

RNAV (GPS) RWY 26

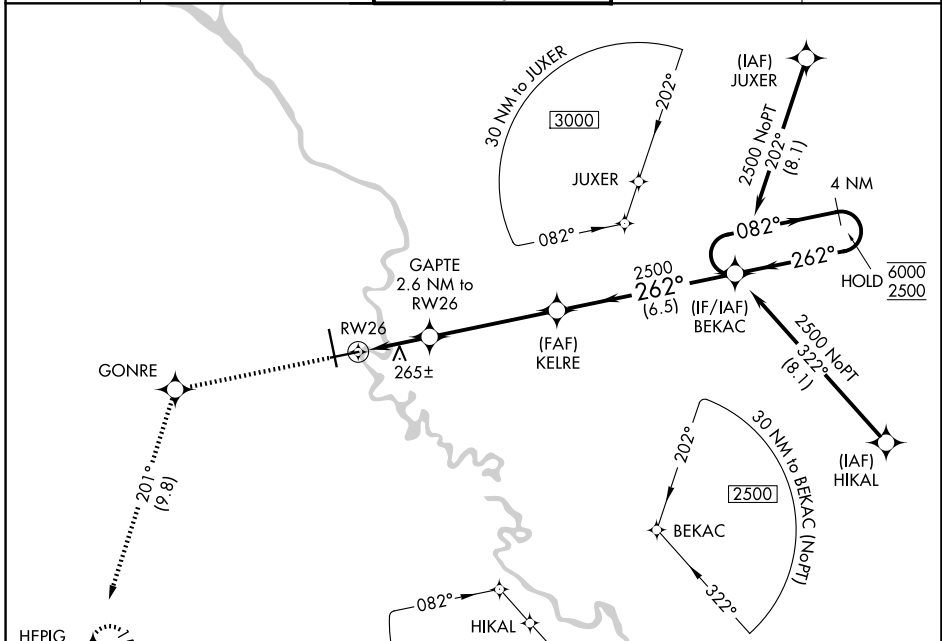
AUGUSTA RGNL AT BUSH FLD (AGS)

RNP APCH - GPS.

▼ Rwy 26 helicopter visibility reduction below 3/4 SM NA. VDP NA with Daniel Fld altimeter setting.
▲ When local altimeter setting not received, use Daniel Fld altimeter setting and increase all MDAs 60 feet; increase LNAV and Circling Cats C and D visibility 1/2 SM.

MISSED APPROACH:
 Climb to 3000 direct GONRE and on track 201° to HEPIG and hold.

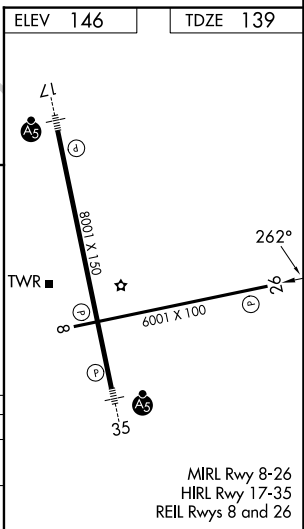
ATIS 132.75	AUGUSTA APP CON* 126.8 270.3	AUGUSTA TOWER* 118.7 (CTAF) 239.3	GND CON 121.9 348.6	UNICOM 122.95
-----------------------	--	---	-------------------------------	-------------------------



SE-4, 16 APR 2026 to 14 MAY 2026

SE-4, 16 APR 2026 to 14 MAY 2026

	ELEV 146	TDZE 139		
3000	GONRE	HEPIG		
↑	tr 201°	◆		
CATEGORY	A	B	C	D
LNAV MDA	520-1	381 (400-1)	520-1 1/8	381 (400-1 1/8)
CIRCLING	780-1	634 (700-1)	780-1 3/4	940-2 1/2
			634 (700-1 3/4)	794 (800-2 1/2)



MIRL Rwy 8-26
 HIRL Rwy 17-35
 REIL Rws 8 and 26