

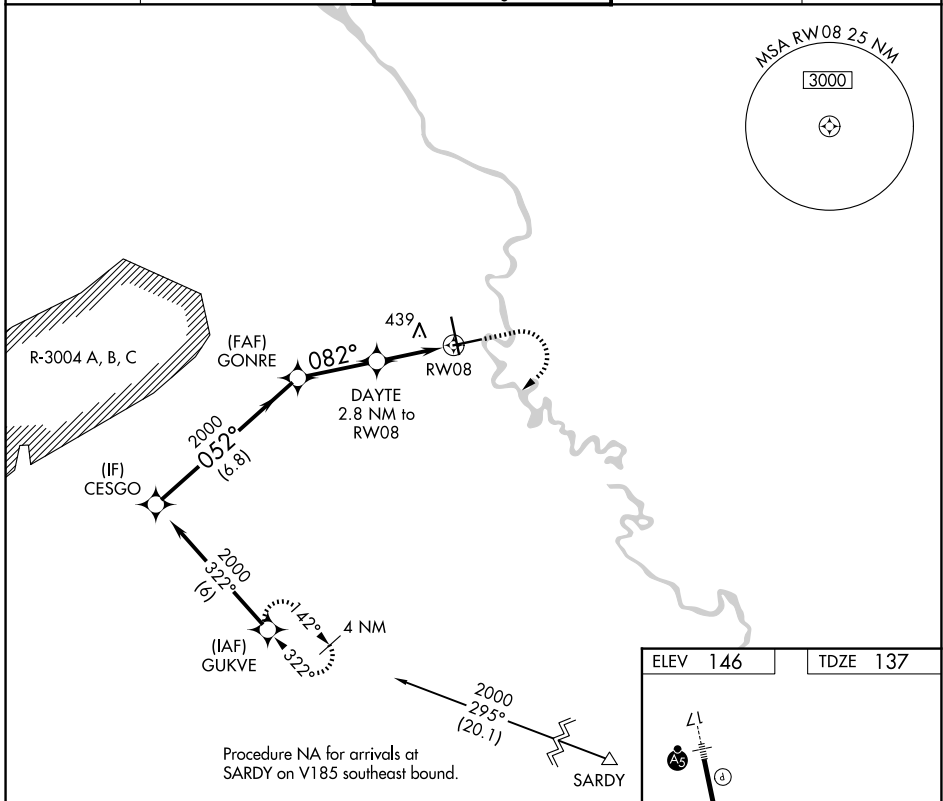
APP CRS	Rwy Ldg	6001
082°	TDZE	137
	Apt Elev	146

RNAV (GPS) Y RWY 8

AUGUSTA RGNL AT BUSH FLD (AGS)

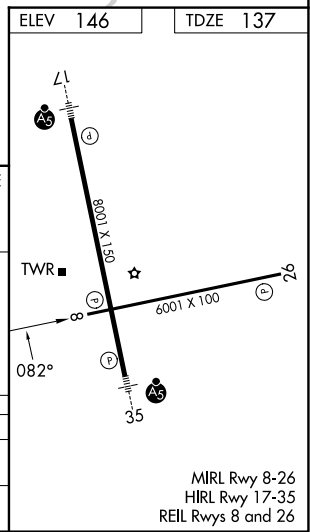
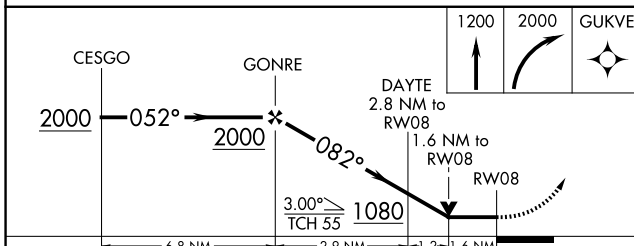
RNP APCH - GPS.	MISSED APPROACH: Climb to 1200 then climbing right turn to 2000 direct GUKVE and hold.
<p>▼ Rwy 8 helicopter visibility reduction below $\frac{3}{4}$ SM NA. VDP NA with Daniel Fld altimeter setting.</p> <p>▲ When local altimeter setting not received, use Daniel Fld altimeter setting and increase all MDA's 60 feet; increase LNAV Cats C and D visibility $\frac{1}{8}$ SM and Circling Cats C and D visibility $\frac{1}{4}$ SM.</p>	

ATIS 132.75	AUGUSTA APP CON* 126.8 270.3	AUGUSTA TOWER* 118.7 (CTAF) 239.3	GND CON 121.9 348.6	UNICOM 122.95
-----------------------	--	---	-------------------------------	-------------------------



SE-4, 16 APR 2026 to 14 MAY 2026

SE-4, 16 APR 2026 to 14 MAY 2026



CATEGORY	A	B	C	D
LNAV MDA	700-1	563 (600-1)	700- $\frac{1}{8}$	563 (600- $\frac{1}{8}$)
CIRCLING	780-1	634 (700-1)	780- $\frac{1}{4}$ 634 (700- $\frac{1}{4}$)	940- $\frac{1}{2}$ 794 (800- $\frac{1}{2}$)

MIRL Rwy 8-26
HIRL Rwy 17-35
REIL Rws 8 and 26