

LOC I-AUG 108.7	APP CRS 171°	Rwy Ldg 5002	TDZE 348
		Apt Elev 352	

ILS or LOC RWY 17

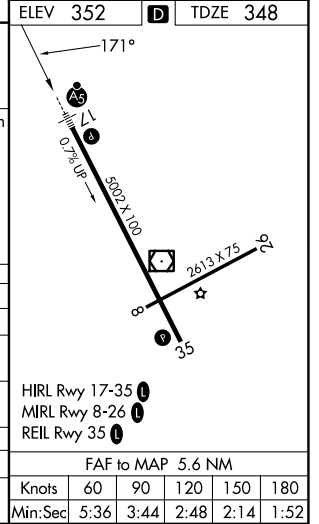
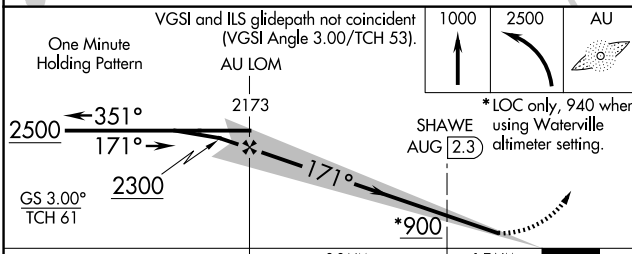
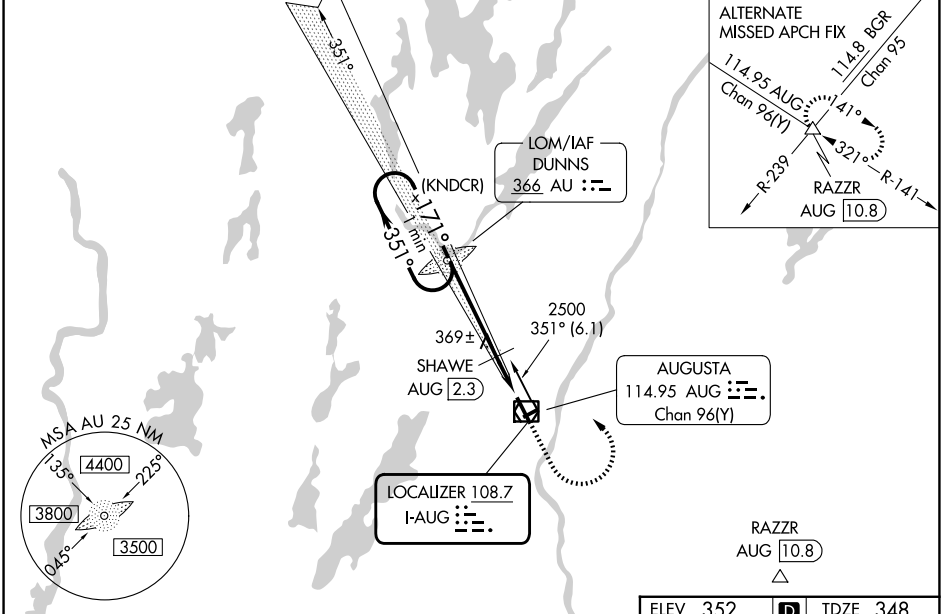
AUGUSTA STATE (AUG)

ADF required.

Localizer unusable from 0.5 NM to threshold above 1500 feet. When local altimeter setting not received, use Waterville altimeter setting; increase S-ILS 17 DA to 583; increase all MDAs 40 feet and visibility S-LOC 17 Cat C and D 1/8 SM, and Circling Cat D 1/4 SM; SHAWE fix minimums increase S-LOC 17 Cat C and D visibility 1/8 SM, and Circling Cat D visibility 1/4 SM. Glideslope unusable below 430 feet. Circling Rwy 8, 26 NA at night. # DME from AUG VOR/DME.

MALSRL MISSED APPROACH: Climb to 1000 then climbing left turn to 2500 direct DUNNS LOM and hold.

ASOS 118.325	PORTLAND APP CON ★ 128.35 299.2	CLNC DEL 119.95 299.2	UNICOM 123.0 (CTAF)
------------------------	---	---------------------------------	-------------------------------



CATEGORY	A	B	C	D
S-ILS 17	548-1/2		200 (200-1/2)	
S-LOC 17	900-1/2	552 (600-1/2)	900-1 1/4	552 (600-1 1/4)
CIRCLING	940-1	980-1	980-1 3/4	1160-2 1/2
	588 (600-1)	628 (700-1)	628 (700-1 3/4)	808 (900-2 1/2)
SHAWE FIX MINIMUMS #				
S-LOC 17	620-1/2		272 (300-1/2)	
CIRCLING	940-1	980-1	980-1 3/4	1160-2 1/2
	588 (600-1)	628 (700-1)	628 (700-1 3/4)	808 (900-2 1/2)

NE-1, 16 APR 2026 to 14 MAY 2026

NE-1, 16 APR 2026 to 14 MAY 2026