

| | | |
|--|------------------------|---|
| WAAS CH 70720 W17A | APP CRS 171° | Rwy Ldg 5002 TDZE 348 Apt Elev 352 |
|--|------------------------|---|

RNAV (GPS) RWY 17

AUGUSTA STATE (AUG)

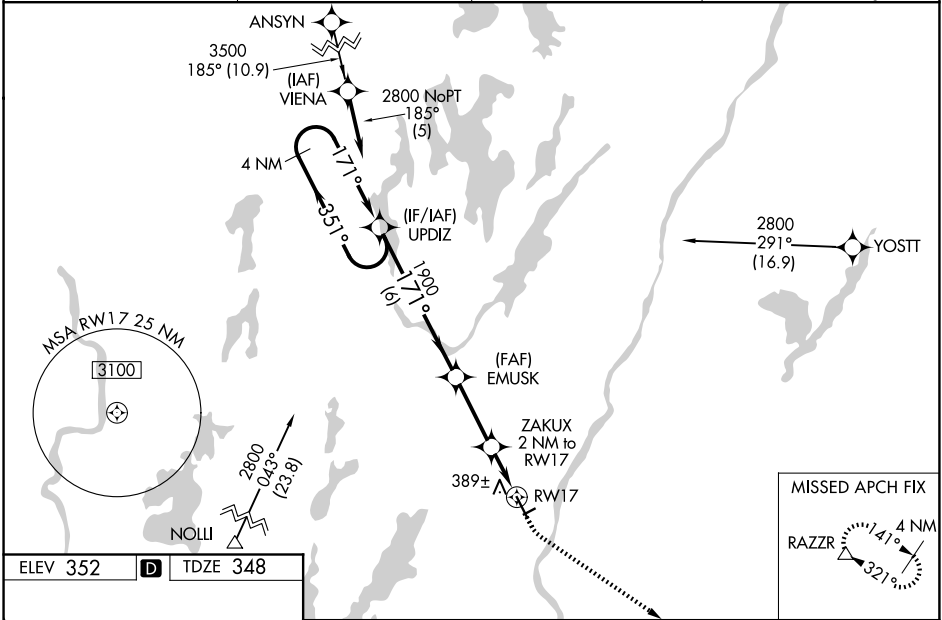
RNP APCH - GPS.

⚠ For inop MALSR, increase LNAV/VNAV all Cats visibility to 1 mile. For inop MALSR when using Waterville altimeter setting, increase LNAV/VNAV all Cats visibility to 1½ mile. VDP and Baro-VNAV NA with Waterville altimeter setting. When local altimeter setting not received, use Waterville altimeter setting: increase LPV DA to 583 feet, LNAV/VNAV DA to 710 feet, and visibility LNAV/VNAV all Cats ½ SM; increase all MDA 40 feet and visibility LNAV Cats C and D ½ SM, and Circling Cat D ¼ SM. For uncompensated Baro-VNAV systems, LNAV/VNAV NA below -30°C or above 41°C. Circling Rwy 8, 26 NA at night.

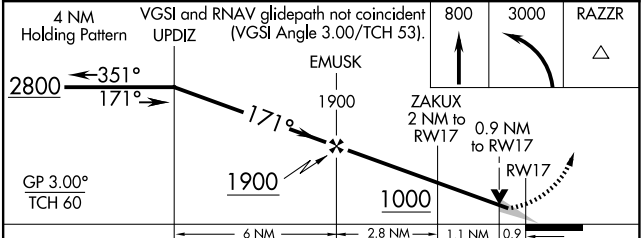
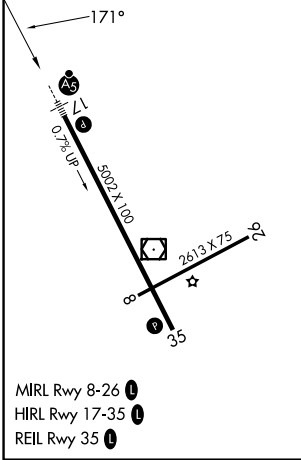


MISSED APPROACH:
Climb to 800 then climbing left turn to 3000 direct RAZZR and hold.

| | | | |
|------------------------|---|---------------------------------|---------------------------------|
| ASOS 118.325 | PORTLAND APP CON * 128.35 299.2 | CLNC DEL 119.95 299.2 | UNICOM 123.0 (CTAF) 0 |
|------------------------|---|---------------------------------|---------------------------------|



| | | |
|----------|----------|----------|
| ELEV 352 | D | TDZE 348 |
|----------|----------|----------|



| CATEGORY | A | B | C | D |
|--------------|----------------------|----------------------|------------------------|-------------------------|
| LPV DA | | 548-½ | 200 (200-½) | |
| LNAV/VNAV DA | | 675-⅝ | 327 (400-⅝) | |
| LNAV MDA | | 640-½ | 292 (300-½) | |
| CIRCLING | 960-1 608 (700-1) | 980-1 628 (700-1) | 980-1¾ 628 (700-1¾) | 1160-2½ 808 (900-2½) |

NE-1, 16 APR 2026 to 14 MAY 2026

NE-1, 16 APR 2026 to 14 MAY 2026