

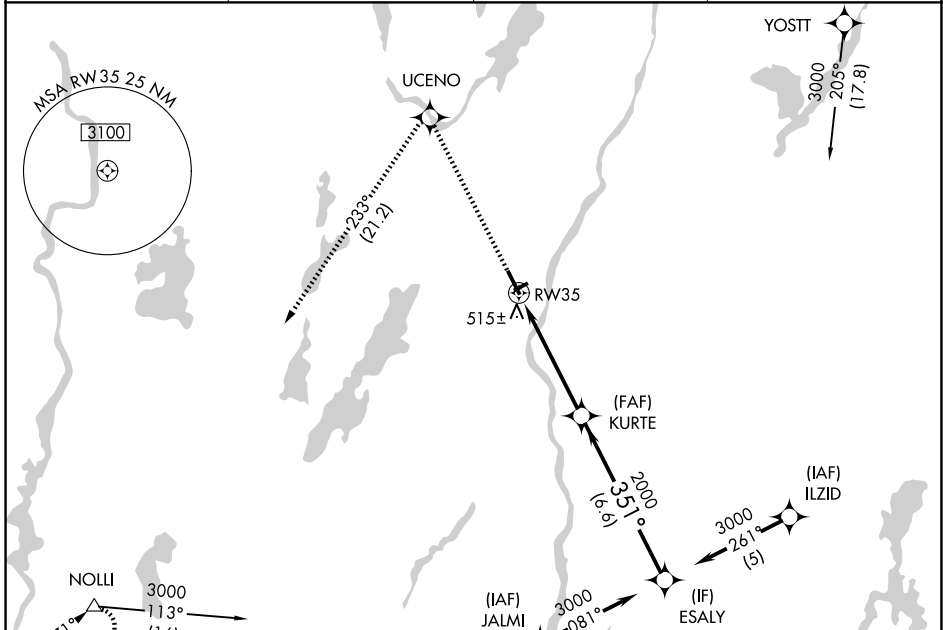
WAAS CH 70406 W35A	APP CRS 351°	Rwy Ldg TDZE Apt Elev	5002 350 352
--	------------------------	-----------------------------	---

RNAV (GPS) RWY 35

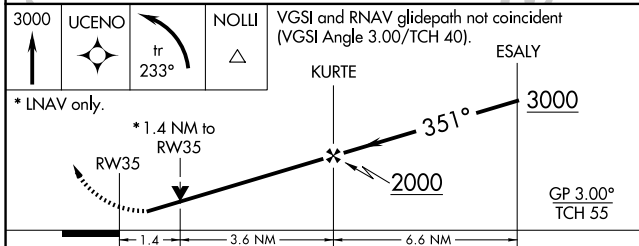
AUGUSTA STATE (AUG)

RNP APCH.	<p>⚠ Circling to Rwy 26 NA at night. Rwy 35 helicopter visibility reduction below $\frac{3}{4}$ SM NA. ⚠ For uncompensated Baro-VNAV systems, LNAV/VNAV NA below -15°C or above 54°C.</p>	MISSED APPROACH: Climb to 3000 direct UCENO and left turn on track 233° to NOLLI and hold.
-----------	---	--

ASOS 118.325	PORTLAND APP CON ★ 128.35 299.2	CLNC DEL 119.95 299.2	UNICOM 123.0 (CTAF) ①
------------------------	---	---------------------------------	---------------------------------

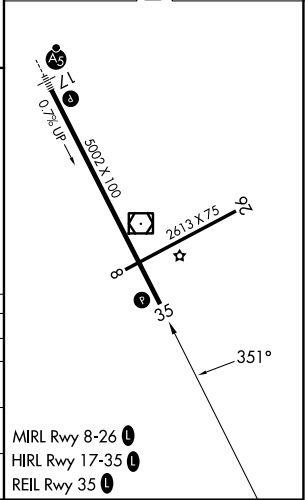


3000	UCENO	ir 233°	NOLLI	VGSI and RNAV glidepath not coincident (VGSI Angle 3.00/TCH 40).	ESALY
------	-------	---------	-------	--	-------



CATEGORY	A	B	C	D
LPV DA	610-1 260 (300-1)			
LNAV/VNAV DA	850-1 $\frac{3}{4}$ 500 (500-1 $\frac{3}{4}$)			
LNAV MDA	840-1 490 (500-1)	840-1 $\frac{3}{4}$ 490 (500-1 $\frac{3}{4}$)		840-1 $\frac{1}{2}$ 490 (500-1 $\frac{1}{2}$)
CIRCLING	880-1 $\frac{3}{4}$ 528 (600-1 $\frac{3}{4}$)	980-1 $\frac{3}{4}$ 628 (700-1 $\frac{3}{4}$)	1160-2 $\frac{1}{2}$ 808 (900-2 $\frac{1}{2}$)	

ELEV 352	D	TDZE 350
----------	---	----------



NE-1, 16 APR 2026 to 14 MAY 2026

NE-1, 16 APR 2026 to 14 MAY 2026