


LOC I-LJU <b>108.5</b>	APP CRS <b>245°</b>	Rwy Ldg TDZE Apt Elev	<b>11801</b> <b>624</b> <b>633</b>
---------------------------	------------------------	-----------------------------	--

**ILS or LOC RWY 25**  
OSCODA/WURTSMITH (OSC)

DME required.

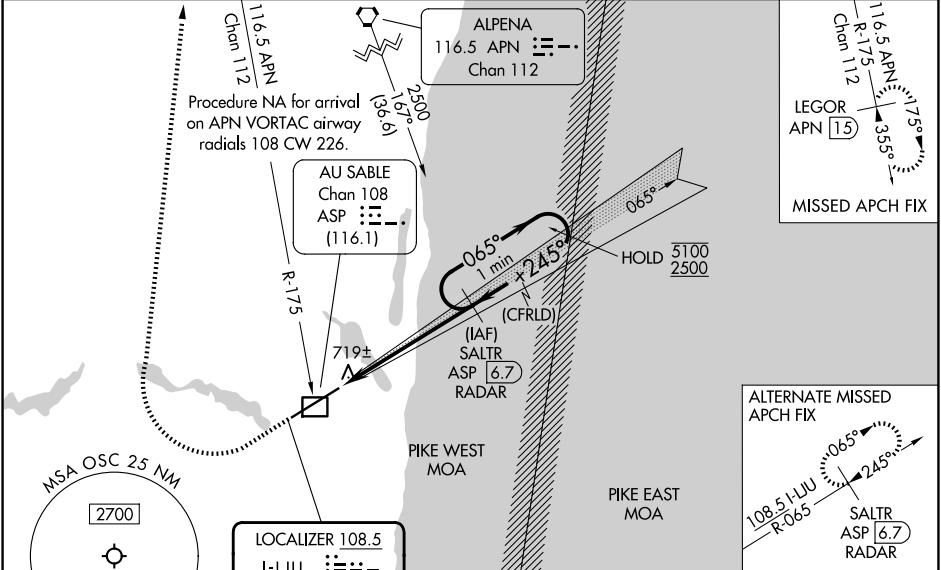
**NA** Circling NA southeast of Rwy 7-25. For inop ALS, increase S-LOC Cats C and D visibility to 1 SM. DME from ASP DME. Simultaneous reception of I-LJU and ASP DME required.

**MALS**

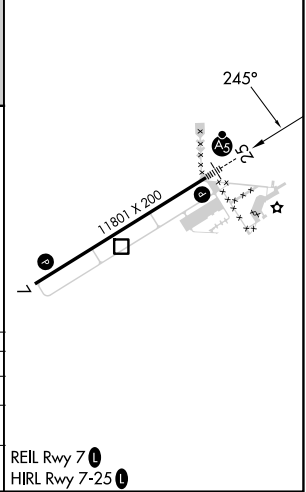
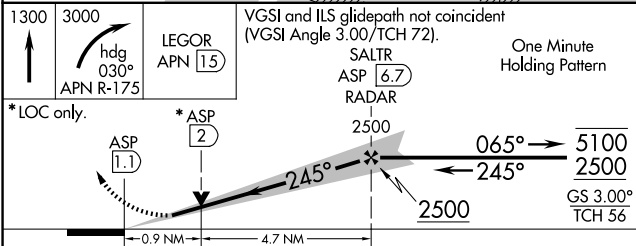


MISSED APPROACH: Climb to 1300 then climbing right turn to 3000 on heading 030° and an APN VORTAC R-175 to LEGOR/APN 15 DME and hold.

AWOS-3P <b>118.7</b>	MINNEAPOLIS CENTER <b>125.475 269.45</b>	UNICOM <b>123.0 (CTAF) 0</b>
-------------------------	---	---------------------------------



ELEV 633	TDZE 624
----------	----------



CATEGORY	A	B	C	D
S-ILS 25	824-1/2 200 (200-1/2)			
S-LOC 25	980-1/2 356 (400-1/2)		980-5/8 356 (400-5/8)	
CIRCLING	1140-1 507 (600-1)		1300-2 667 (700-2)	

EC-1, 16 APR 2026 to 14 MAY 2026

EC-1, 16 APR 2026 to 14 MAY 2026