

|  |                        |  |
|--|------------------------|--|
| WAAS<br>CH <b>97417</b><br><b>W07A</b> | APP CRS<br><b>065°</b> | Rwy Ldg <b>11801</b><br>TDZE <b>633</b><br>Apt Elev <b>633</b> |
|--|------------------------|--|

# RNAV (GPS) RWY 7

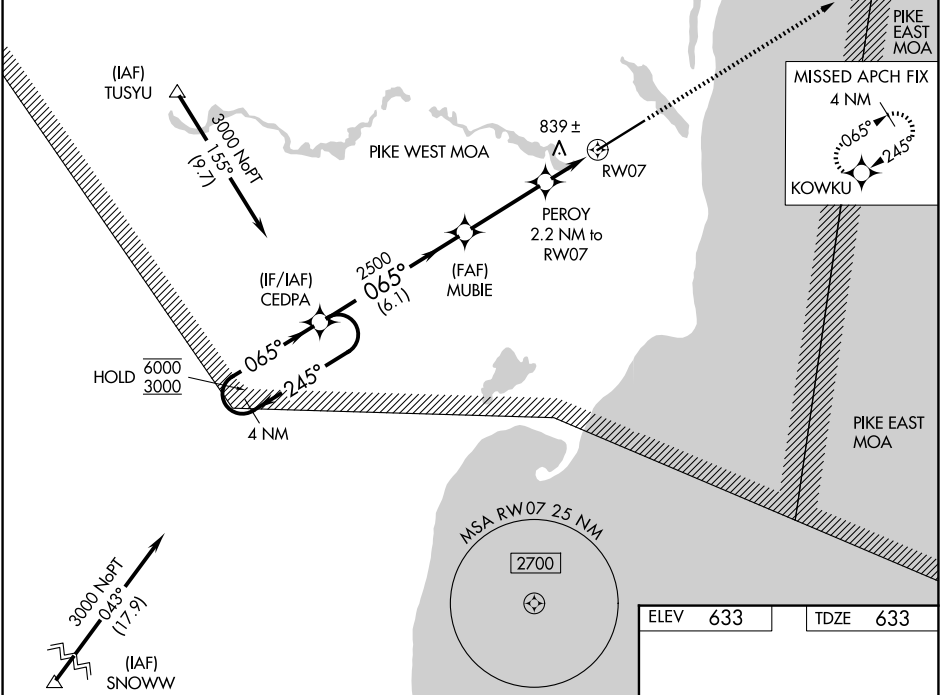
OSCODA/WURTSMITH (OSC)

RNP APCH:

▼ Circling NA southeast of Rwy 7-25. Baro-VNAV and VDP NA when using Alpena altimeter setting. Rwy 7 helicopter visibility reduction below  $\frac{3}{4}$  SM NA. For uncompensated Baro-VNAV systems, LNAV/VNAV NA below -16°C or above 54°C. When local altimeter setting not received use Alpena altimeter setting and increase all DA 96 feet and all MDA 100 feet. Increase LPV all Cats and LNAV Cat C and D visibility  $\frac{1}{4}$  SM, and Circling Cat C visibility  $\frac{1}{4}$  SM and Cat D visibility  $\frac{1}{2}$  SM.

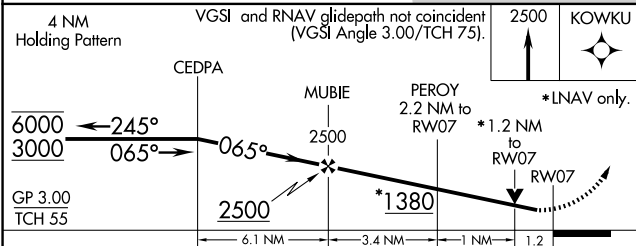
MISSED APPROACH:  
Climb to 2500 direct KOWKU and hold.

|                         |   |                               |
|-------------------------|---|-------------------------------|
| AWOS-3P<br><b>118.7</b> | MINNEAPOLIS CENTER<br><b>125.475 269.45</b> | UNICOM<br><b>123.0 (CTAF)</b> |
|-------------------------|---|-------------------------------|



EC-1, 16 APR 2026 to 14 MAY 2026

EC-1, 16 APR 2026 to 14 MAY 2026



|          |          |
|----------|----------|
| ELEV 633 | TDZE 633 |
|----------|----------|

|              |   |             |  |  |
|--------------|---|-------------|--|--|
| CATEGORY     | A   | B           | C  | D  |
| LPV DA       | 892- $\frac{3}{4}$ 259 (300- $\frac{3}{4}$ )    |             |  |  |
| LNAV/VNAV DA | 1148-1 $\frac{3}{4}$ 515 (600-1 $\frac{3}{4}$ ) |             |  |  |
| LNAV MDA     | 1080-1  | 447 (500-1) | 1080-1 $\frac{3}{8}$<br>447 (500-1 $\frac{3}{8}$ ) | 1080-1 $\frac{1}{2}$<br>447 (500-1 $\frac{1}{2}$ ) |
| CIRCLING     | 1140-1  | 507 (600-1) | 1160-1 $\frac{1}{2}$<br>527 (600-1 $\frac{1}{2}$ ) | 1300-2<br>667 (700-2)                              |

