

WAAS CH <b>90133</b> <b>W13A</b>	APP CRS <b>125°</b>	Rwy Ldg TDZE Apt Elev	<b>5084</b> <b>3370</b> <b>3373</b>
--	------------------------	-----------------------------	---

# RNAV (GPS) RWY 13

BAKER CITY MUNI (BKE)

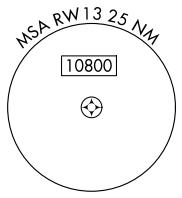
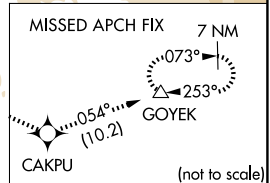
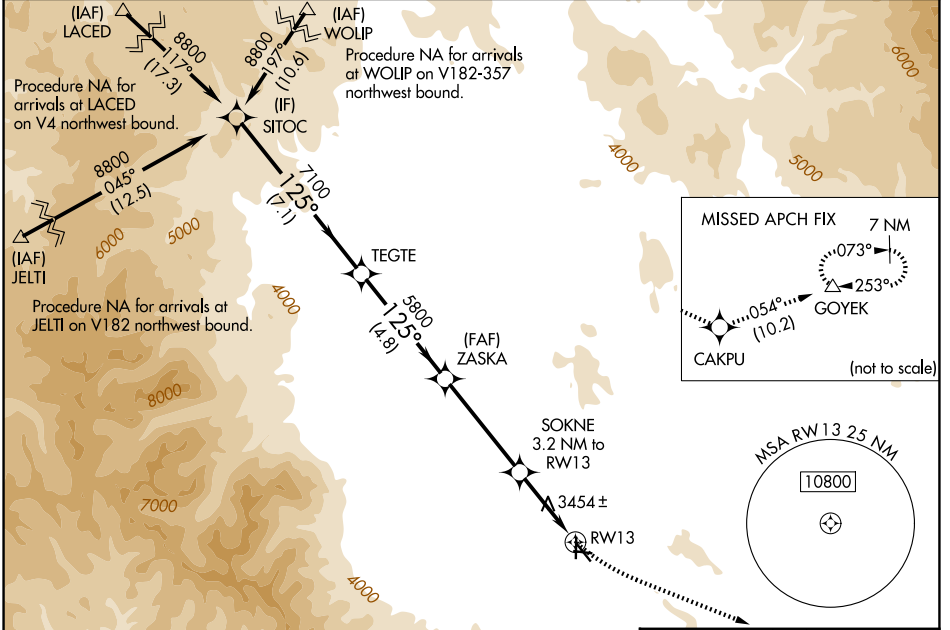
RNP APCH - GPS.

**⚠** For uncompensated Baro-VNAV systems, LNAV/VNAV NA below -22°C or above 51°C. Rwy 13 helicopter visibility reduction below ¾ SM NA. Circling Rwy 8, 17, 26, and 35 NA at night.

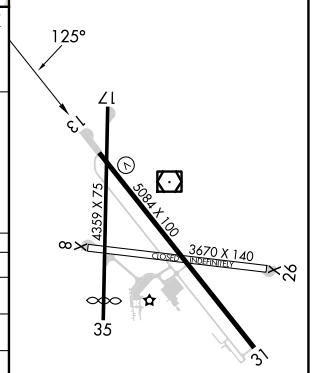
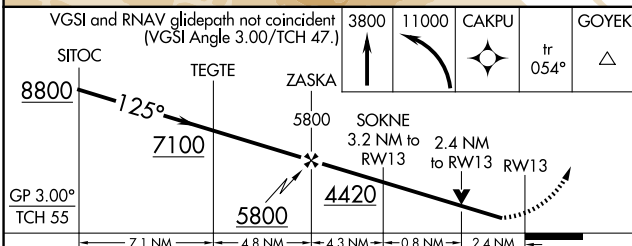
**⚠** -22°C

MISSED APPROACH: Climb to 3800 then climbing left turn to 11000 direct CAKPU and on track 054° to GOYEK and hold, continue climb-in-hold to 11000. # Missed approach requires minimum climb of 266 feet per NM to 4580.

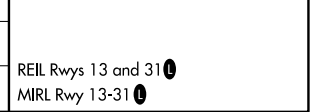
ASOS <b>134.275</b>	SALT LAKE CENTER <b>128.05 306.95</b>	UNICOM <b>123.0 (CTAF)</b>
------------------------	--	-------------------------------



ELEV 3373	TDZE 3370
-----------	-----------



CATEGORY	A	B	C	D
LPV DA #		3621-¾	251 (300-¾)	
LPV DA		3833-1½	463 (500-1½)	
LNAV/VNAV DA		3916-1⅞	546 (600-1⅞)	
LNAV MDA	4200-1 830 (900-1)	4200-1¼ 830 (900-1¼)	4200-2½	830 (900-2½)
CIRCLING	4200-1¼	827 (900-1¼)	4560-3 1187 (1200-3)	4720-3 1347 (1400-3)



NW-1, 16 APR 2026 to 14 MAY 2026

NW-1, 16 APR 2026 to 14 MAY 2026