

COCOA BEACH, FLORIDA

# RNAV (GPS) RWY 21

APCH CRS <b>207°</b>	Rwy Idg <b>9008</b>
	TDZE <b>7</b>
	Arpt Elev <b>8</b>

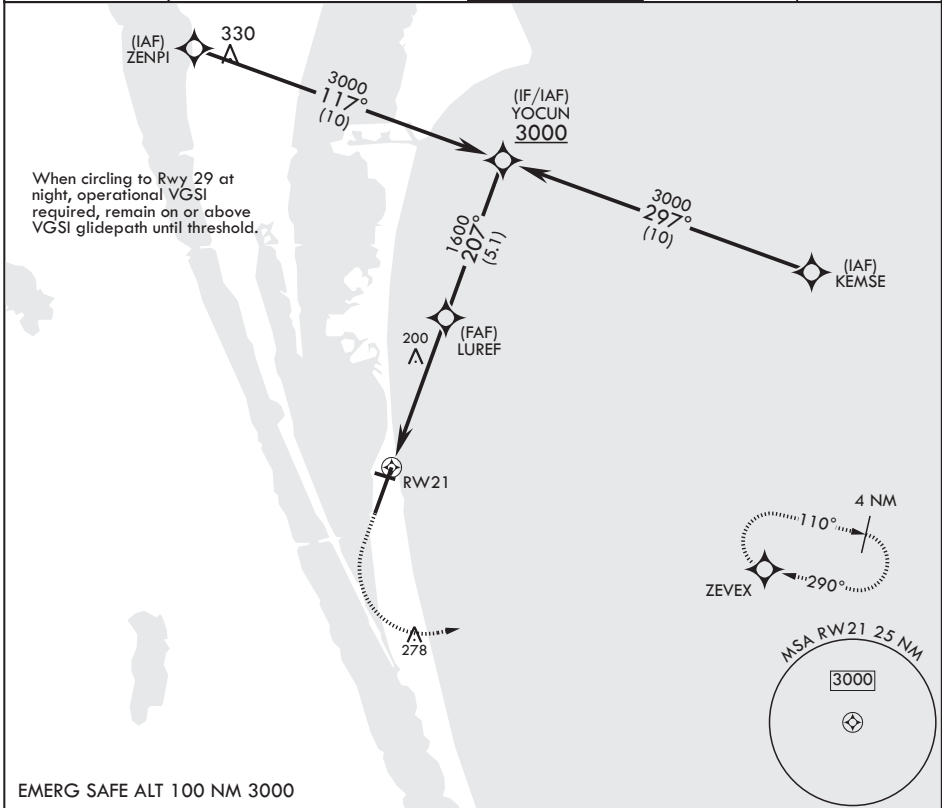
(USAF)

PATRICK SFB (KCOF)

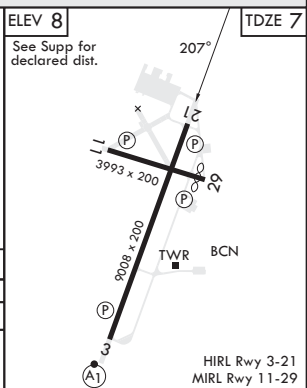
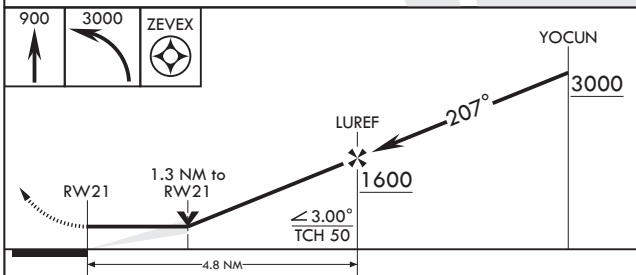
RNP APCH-GPS MISSED APPROACH: Climb to 900 then climbing left turn to 3000 direct ZEVEX and hold.

▼ \* Circling NA NW of RWY 3-21.

ATIS* <b>119.175 273.5</b>	ORLANDO APP CON/DEP CON* <b>126.025 281.425</b>	TOWER* <b>133.75 269.375</b>	GND CON* <b>124.35 335.8</b>	CLNC DEL* <b>118.4 289.4</b>
-------------------------------	--	---------------------------------	---------------------------------	---------------------------------



EMERG SAFE ALT 100 NM 3000



CATEGORY	A	B	C	D	E
LNVA MDA	460/55	453 (500-1)	460-1%	453 (500-1%)	
CIRCLING*	520-1	512 (600-1)	540-1½ 532 (600-1½)	560-2 552 (600-2)	580-2 572 (600-2)

COCOA BEACH, FLORIDA

28°14'N - 80°37'W

PATRICK SFB (KCOF)

Amdt 1 02NOV23

# RNAV (GPS) RWY 21

SE-3, 16 APR 2026 to 14 MAY 2026

SE-3, 16 APR 2026 to 14 MAY 2026