

COCOA BEACH, FLORIDA

# RNAV (GPS) RWY 3

APCH CRS	Rwy Idg	9008
027°	TDZE	5
	Arprt Elev	8

(USAF)

PATRICK SFB (KCOF)

RNP APCH-GPS

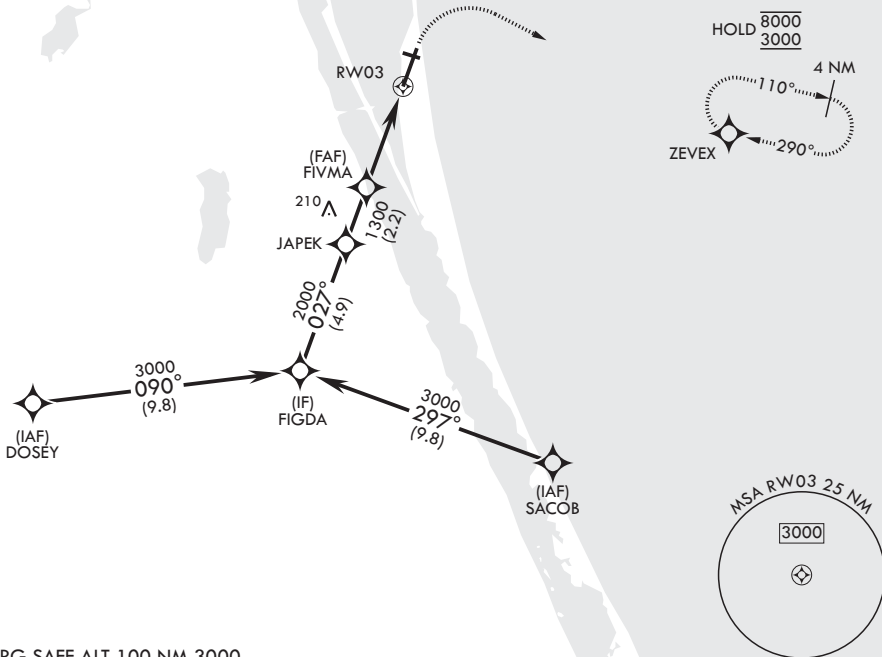


MISSED APPROACH: Climb to 600 then climbing right turn to 3000 direct ZEVEX and hold.

▼ \* When ALS inop, increase CAT AB RVR to 55, vis to 1 mile; CAT CD vis to 1 3/8 miles.  
 \*\* Circling not authorized NW of RWY 3-21.

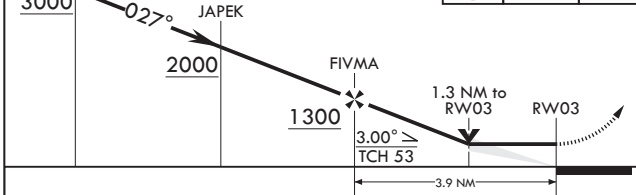
ATIS*	ORLANDO APP CON/DEP CON*	TOWER*	GND CON*	CLNC DEL*
119.175 273.5	126.025 281.425	133.75 269.375	124.35 335.8	118.4 289.4

When circling to Rwy 29 at night, operational VGSI required, remain on or above VGSI glidepath until threshold.

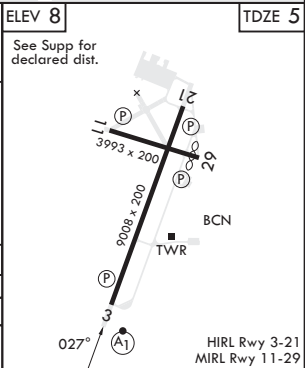


EMERG SAFE ALT 100 NM 3000

FIGDA	600	3000	ZEVEX	ELEV 8	TDZE 5
3000	↑	↪	⊙	See Supp for declared dist.	



CATEGORY	A	B	C	D
LNAV MDA*	480/24	475 (500-½)	480/50	475 (500-1)
CIRCLING**	520-1	512 (600-1)	540-1½ 532 (600-1½)	560-2 552 (600-2)



COCOA BEACH, FLORIDA

28°14'N - 80°37'W

PATRICK SFB (KCOF)

Orig 11JUL24

# RNAV (GPS) RWY 3

HIRL Rwy 3-21  
MIRL Rwy 11-29

SE-3, 16 APR 2026 to 14 MAY 2026

SE-3, 16 APR 2026 to 14 MAY 2026