

RIVER FOUR DEPARTURE

PATRICK SFB (KCOF)

COCOA BEACH, FLORIDA

(USAF)

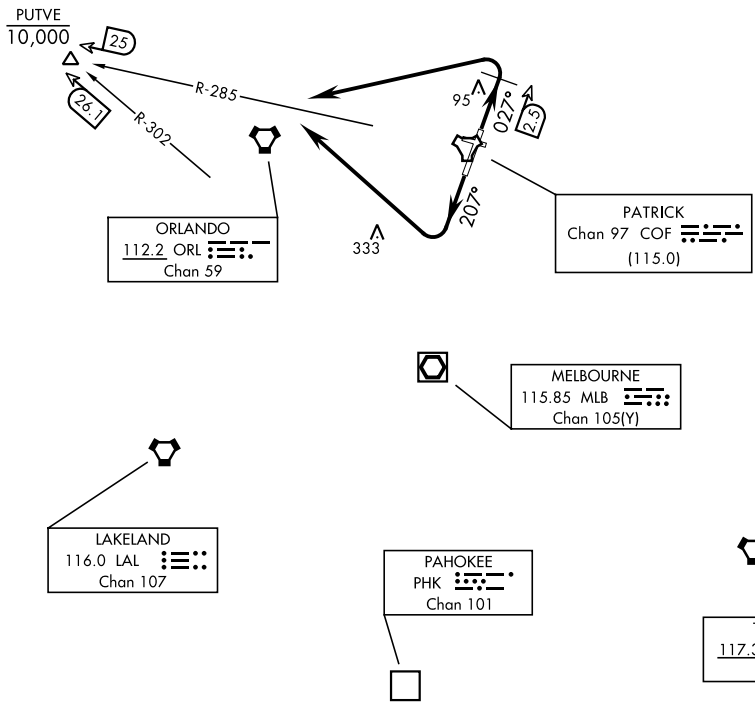
ATIS ★
 119.175 273.5
 CLNC DEL ★
 118.4 289.4
 GND CON ★
 124.35 335.8
 TOWER ★
 133.75 269.375
 ORLANDO DEP CON ★
 126.025 281.425

DME required

| Rwy | Knots | 60 | 120 | 180 | 240 | 300 | 360 |
|---------------------------|----------|-----|-----|-----|-----|------|------|
| 03/21 | V/V(fpm) | 210 | 420 | 630 | 840 | 1050 | 1260 |
| Minimum Climb Rate to 500 | | | | | | | |

**TOP ALTITUDE
2000**

ORMOND BEACH
 112.6 OMN ---
 Chan 73



NOTE: Chart not to scale

DEPARTURE ROUTE DESCRIPTION

Expect clearance to filed altitude/flight level 10 minutes after departure.

TAKEOFF RWY 03: Climb on hdg 027° to COF TACAN 2.5 DME, then left turn to intercept COF R-285 to cross PUTVE (COF 25 DME/MLB VOR/DME 26.1 DME) at or below 10,000, maintain 2000 or higher as assigned.

TAKEOFF RWY 21: Climb on hdg 207°, then right turn to intercept COF TACAN R-285 to cross PUTVE (COF 25 DME/MLB VOR/DME 26.1 DME) at or below 10,000, maintain 2000 or higher as assigned.

RIVER FOUR DEPARTURE

Amdt 1 28NOV24

COCOA BEACH, FLORIDA

PATRICK SFB (KCOF)

SE-3, 16 APR 2026 to 14 MAY 2026

SE-3, 16 APR 2026 to 14 MAY 2026