

LOC/DME I-BGR <b>109.5</b> Chan <b>32</b>	APP CRS <b>330°</b>	Rwy Ldg <b>11440</b> TDZE <b>163</b> Apt Elev <b>192</b>
---	------------------------	--

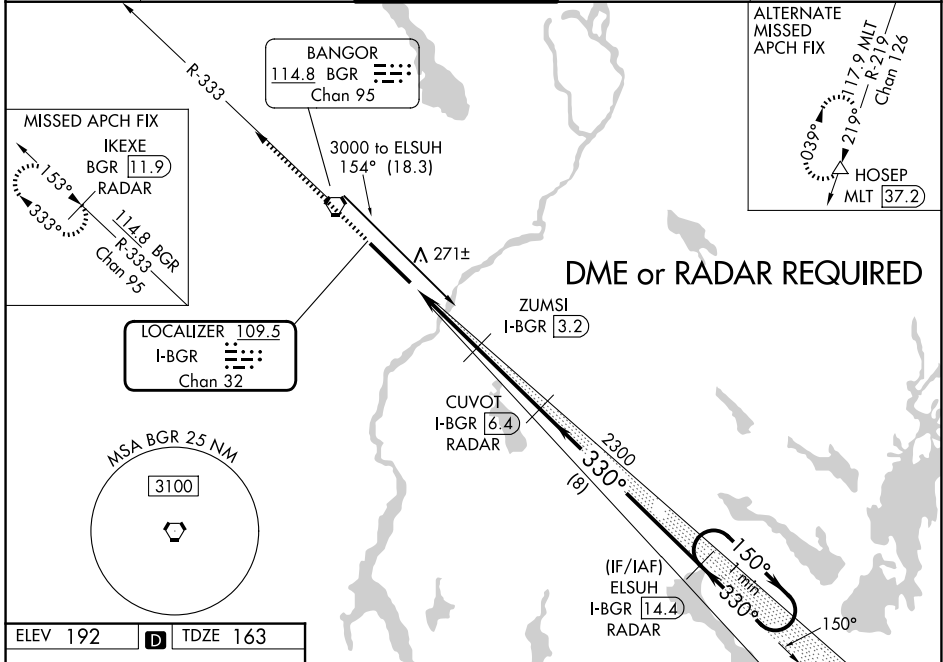
# ILS or LOC RWY 33

BANGOR INTL (BGR)

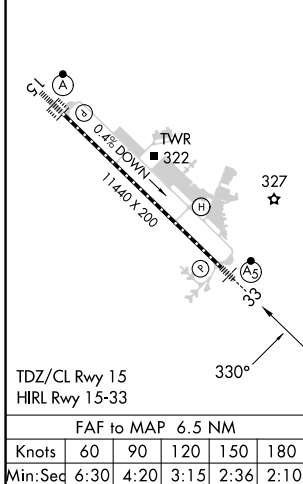
**ASR** Inoperative table does not apply to S-LOC 33 Cats C/D/E. Circling NA northeast of Rwy 15-33. DME or RADAR required. For inop ALS, increase Cat E S-ILS 33 visibility to RVR 4000. ZUMSI Minimums: For inop ALS, increase S-LOC 33 Cat E visibility to RVR 5000. #RVR 1800 authorized with the use of FD or AP or HUD to DA.

**MALSR** MISSED APPROACH: Climb to 3000 on heading 330° and on BGR VORTAC R-333 to IKEXE/BGR VORTAC 11.9 DME/RADAR and hold.

ATIS <b>127.75</b>	BANGOR APP CON <b>118.925 239.3</b>	BANGOR TOWER <b>120.7 233.7</b>	GND CON <b>121.9 348.6</b>	CLNC DEL <b>135.9 348.6</b>
-----------------------	--	------------------------------------	-------------------------------	--------------------------------



ELEV 192	<b>D</b>	TDZE 163
----------	----------	----------



3000	hdg 330°	BGR R-333	IKEXE BGR 11.9 RADAR	CUVOT I-BGR 6.4 RADAR	ELSUH I-BGR 14.4 RADAR	One Minute Holding Pattern
* LOC only.						
* I-BGR 0.7		ZUMSI I-BGR 3.2	2300	330°	150°	3000
0.9		2.5 NM	3.1 NM	8 NM	GS 3.00° TCH 57	
CATEGORY	A	B	C	D	E	
S-ILS 33	#363/24 200 (200-½)					
S-LOC 33	1300/40 1137 (1200-¾)	1300/55 1137 (1200-1)	1300-3	1137	1200-3	
CIRCLING	1300-1¼ 1108 (1200-1½)	1300-1½ 1108 (1200-1½)	1300-3	1108	1200-3	
ZUMSI MINIMUMS						
S-LOC 33	500/24	337 (400-½)	500/26	337	400-½	
CIRCLING	640-1 448 (500-1)	720-1 528 (600-1)	740-1½ 548 (600-½)	820-2 628 (700-2)	880-2½ 688 (700-2½)	