

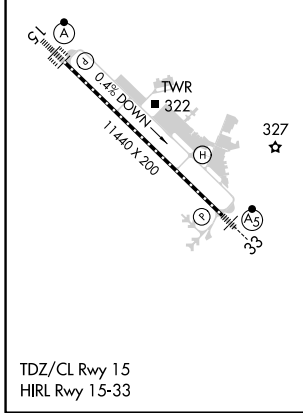
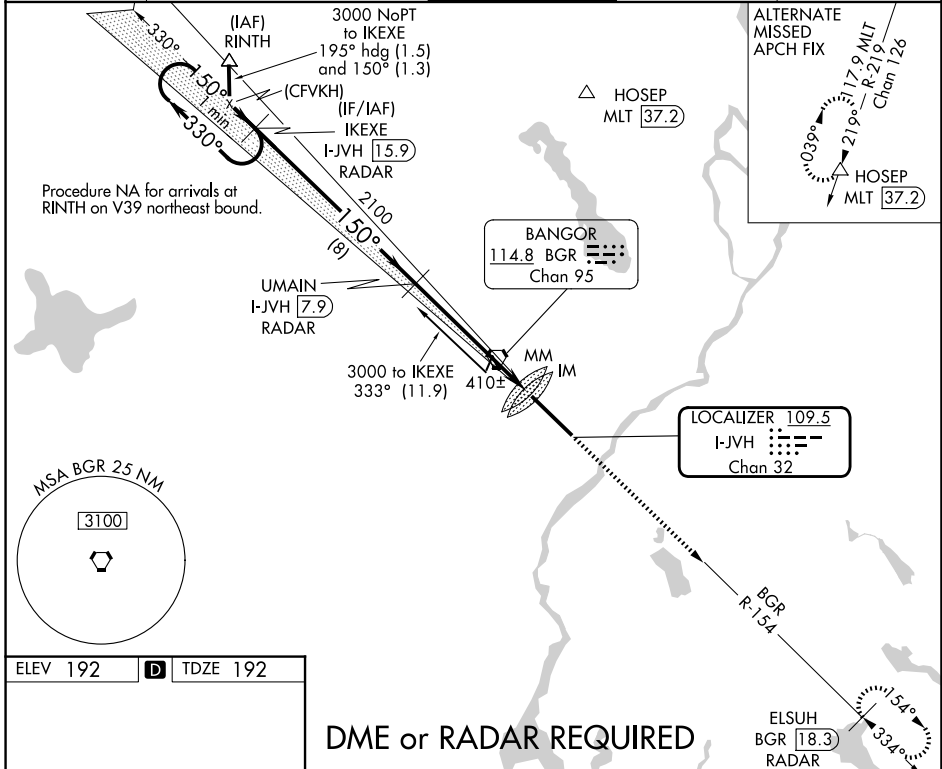
LOC/DME I-JVH 109.5 Chan 32	APP CRS 150°	Rwy Ldg TDZE 192 Apt Elev 192
---	------------------------	--

ILS Y RWY 15 (CAT II & III)

BANGOR INTL (BGR)

 DME or RADAR required.	ALSF-2 	MISSED APPROACH: Climb to 3000 on heading 150° and BGR VORTAC R-154 to ELSUH/BGR 18.3 DME/RADAR and hold.

ATIS 127.75	BANGOR APP CON 118.925 239.3	BANGOR TOWER 120.7 233.7	GND CON 121.9 348.6	CLNC DEL 135.9 348.6
-----------------------	--	------------------------------------	-------------------------------	--------------------------------



VGSi and ILS glidepath not coincident (VGSi Angle 3.00/TCH 55).			
One Minute Holding Pattern IKEXE I-JVH [15.9] RADAR	UMAIN I-JVH [7.9] RADAR	3000 hdg 150° BGR R-154	ELSUH BGR [18.3] RADAR
GS 3.00° TCH 50			
8 NM 5.8 NM 1090'			

CATEGORY	A	B	C	D
S-ILS 15	CAT II RA 113/12 100 DA 292			
S-ILS 15	CAT III RVR 06			

CATEGORY II & III ILS - SPECIAL AIRCREW & AIRCRAFT CERTIFICATION REQUIRED

NE-1, 16 APR 2026 to 14 MAY 2026

NE-1, 16 APR 2026 to 14 MAY 2026