

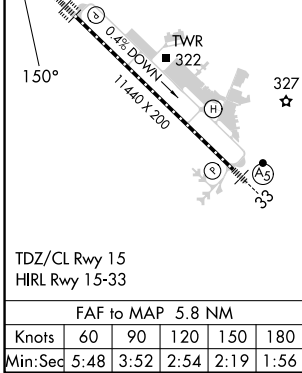
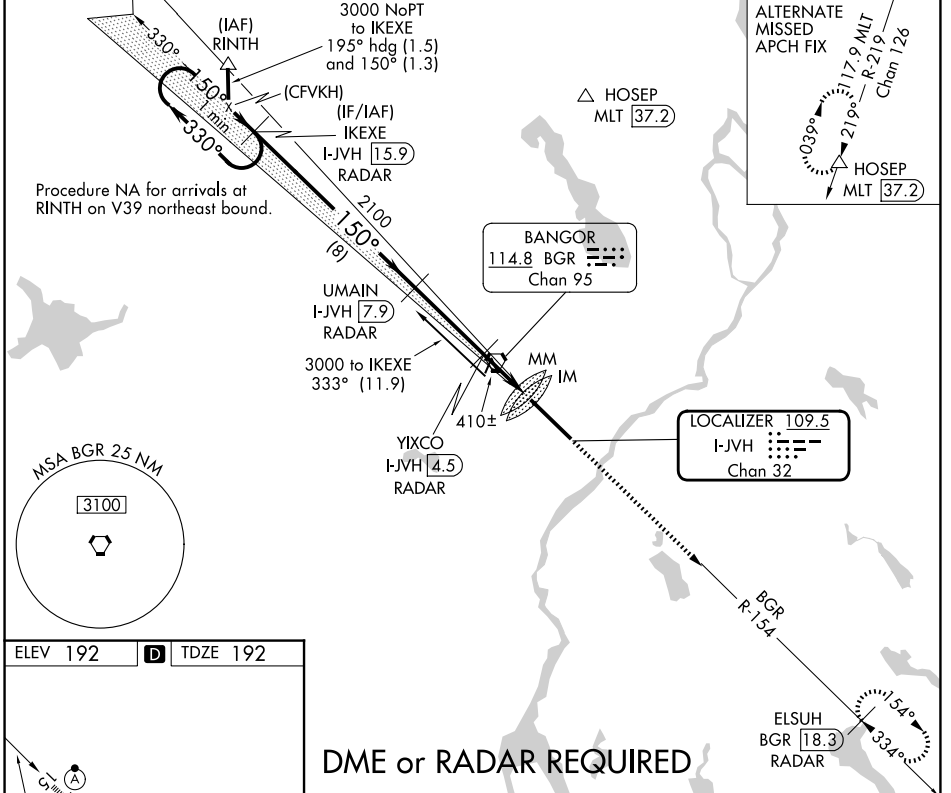
LOC/DME I-JVH <b>109.5</b> Chan <b>32</b>	APP CRS <b>150°</b>	Rwy Ldg TDZE <b>192</b> Apt Elev <b>192</b>	<b>11440</b>
---	------------------------	---	--------------

# ILS Y or LOC Y RWY 15

BANGOR INTL (BGR)

 ASR	Circling NA NE of Rwy 15-33. DME or RADAR required. For inoperative ALS, increase S-ILS 15 Cat E visibility to RVR 4000, and S-LOC 15 Cat C/D/E visibility to 1 1/2 SM.	ALSF-2 	MISSED APPROACH: Climb to 3000 on heading 150° and BGR VORTAC R-154 to ELSUH/BGR 18.3 DME/RADAR and hold.
---------	--	------------	---

ATIS <b>127.75</b>	BANGOR APP CON <b>118.925 239.3</b>	BANGOR TOWER <b>120.7 233.7</b>	GND CON <b>121.9 348.6</b>	CLNC DEL <b>135.9 348.6</b>
-----------------------	--	------------------------------------	-------------------------------	--------------------------------



**DME or RADAR REQUIRED**

One Minute Holding Pattern	IKEXE I-JVH [15.9] RADAR	UMAIN I-JVH [7.9] RADAR	3000 hdg 150°	BGR R-154	ELSUH BGR [18.3] RADAR
3000	330°	150°	150°	2100	*1000
GS 3.00° TCH 50	VGS1 and ILS glidepath not coincident (VGS1 Angle 3.00/TCH 55).	YIXCO I-JVH [4.5] RADAR	I-JVH [3.3]	MM	I-JVH [2.1]
*LOC only.					
CATEGORY	A	B	C	D	E
S-ILS 15	392/18 200 (200-1/2)				
S-LOC 15	660/50 468 (500-1)				
CIRCLING	660-1 468 (500-1)	720-1 528 (600-1)	740-1 548 (600-1 1/2)	820-2 628 (700-2)	880-2 688 (700-2 1/2)

NE-1, 16 APR 2026 to 14 MAY 2026

NE-1, 16 APR 2026 to 14 MAY 2026