

WAAS CH 72817 W13A	APP CRS 133°	Rwy Ldg 5720 TDZE 67 Apt Elev 70
--	------------------------	---

RNAV (GPS) RWY 13

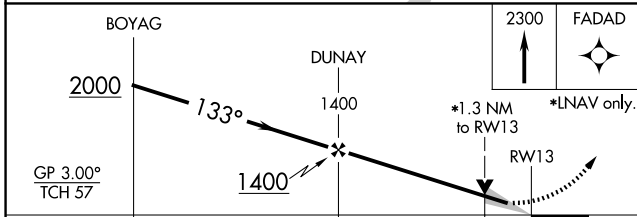
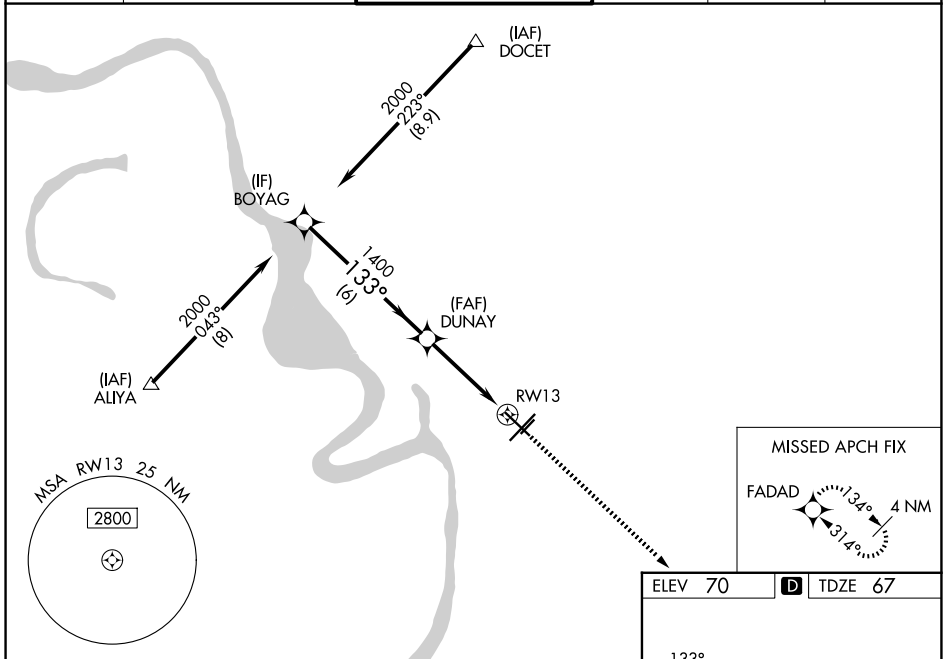
BATON ROUGE METRO, RYAN FLD (BTR)

⚠ For uncompensated Baro-VNAV systems, LNAV/VNAV NA below -5°C (23°F) or above 54°C (130°F). DME/DME RNP-0.3 NA. When local altimeter setting not received, use Hammond altimeter setting and increase all DA 91 feet and all MDA 100 feet, and increase LNAV/VNAV all Cats visibility 1/8 mile, and LNAV Cats C and D visibility 3/8 mile. For inop MALSRS when using Hammond altimeter setting, increase LPV all Cats visibility to 7/8 mile, LNAV Cat C and D visibility to 1 1/8 mile. Baro-VNAV and VDP NA when using Hammond altimeter setting.

MALSRS

MISSED APPROACH: Climb to 2300 direct FADAD and hold.

ATIS 125.2	BATON ROUGE APP CON ★ 120.3 278.3	RYAN TOWER ★ 118.45 (CTAF) 257.8	GND CON 121.9	CLNC DEL 119.4	UNICOM 122.95
----------------------	---	--	-------------------------	--------------------------	-------------------------



ELEV 70	TDZE 67
---------	---------

TDZ/CL Rwy 22R
HIRL Rwy 13-31 and 4L-22R
MIRL Rwy 4R-22L

SC-4, 16 APR 2026 to 14 MAY 2026

SC-4, 16 APR 2026 to 14 MAY 2026