

WAAS CH <b>90125</b> <b>W31A</b>	APP CRS <b>314°</b>	Rwy Ldg <b>6094</b> TDZE <b>69</b> Apt Elev <b>70</b>
----------------------------------------	------------------------	-------------------------------------------------------------

# RNAV (GPS) RWY 31

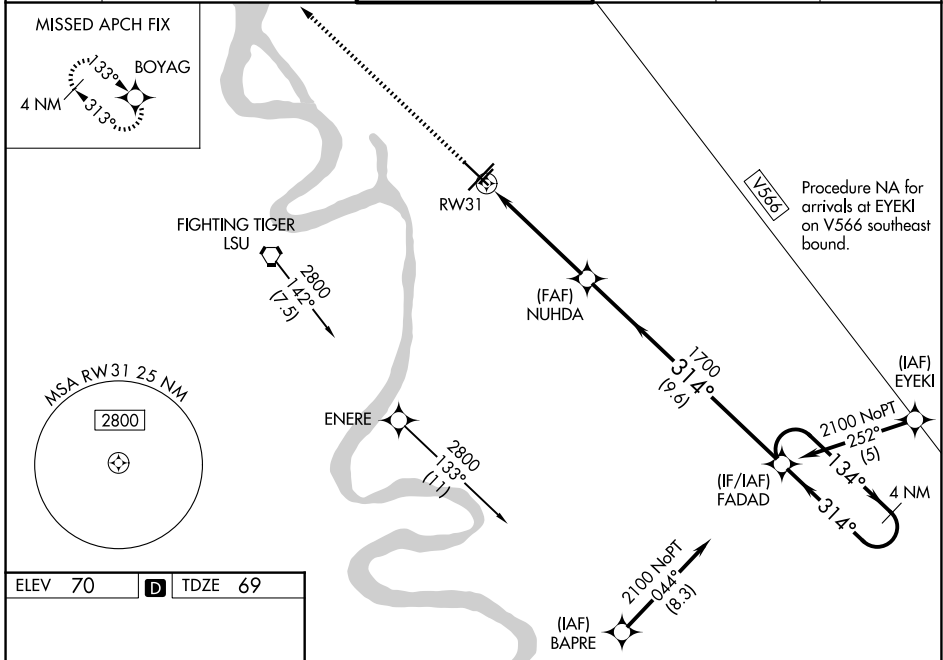
BATON ROUGE METRO, RYAN FLD (BTR)

**RNP APCH.**

▼ For uncompensated Baro-VNAV systems, LNAV/VNAV NA below -5°C (23°F) or above 54°C (130°F). For inop MALS, increase LNAV Cat C/D visibility to 1 3/8 mile. When local altimeter setting not received, use Hammond altimeter setting and increase all DA 91 feet and MDA 100 feet, increase LPV and LNAV/VNAV all Cats visibility 3/8 mile, LNAV Cats C and D visibility 3/8 mile, and Circling Cat C and D visibility 1/4 mile. Baro-VNAV and VDP NA when using Hammond altimeter setting. Rwy 31 helicopter visibility reduction below 3/4 SM NA.

MALS MISSED APPROACH: Climb to 2000 direct BOYAG and hold.

ATIS <b>125.2</b>	BATON ROUGE APP CON ★ <b>120.3 278.3</b>	RYAN TOWER ★ <b>118.45 (CTAF) 257.8</b>	GND CON <b>121.9</b>	CLNC DEL <b>119.4</b>	UNICOM <b>122.95</b>
----------------------	---------------------------------------------	--------------------------------------------	-------------------------	--------------------------	-------------------------



ELEV 70 TDZE 69

TDZ/CL Rwy 22R  
HIRL Rwy 13-31 and 4L-22R  
MIRL Rwy 4R-22L

2000	BOYAG	FADAD	4 NM Holding Pattern
*LNAV only.		NUHDA 1700	2100
*1.3 NM to RW31		314°	GP 3.00° TCH 52
RW31		1700	
1.3		3.7 NM	9.6 NM
CATEGORY	A	B	C
LPV DA	DA	366-3/4	297 (300-3/4)
LNAV/VNAV DA	DA	446-3/4	377 (400-3/4)
LNAV MDA	520-3/4	451 (500-3/4)	520-1 451 (500-1)
CIRCLING	560-1 490 (500-1)	660-1 590 (600-1)	780-2 710 (800-2) 840-2 1/2 770 (800-2 1/2)

SC-4, 16 APR 2026 to 14 MAY 2026

SC-4, 16 APR 2026 to 14 MAY 2026