

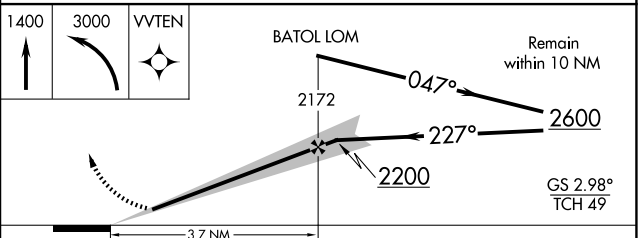
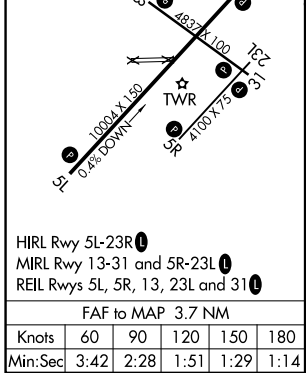
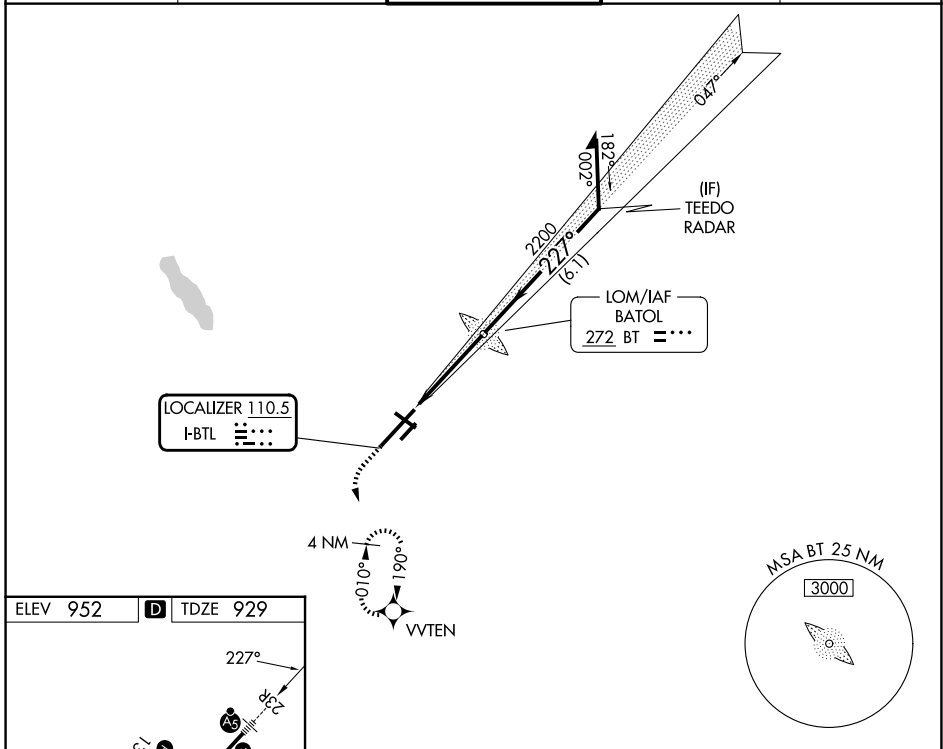
LOC I-BTL 110.5	APP CRS 227°	Rwy Ldg 10004 TDZE 929 Apt Elev 952
---------------------------	------------------------	--

ILS or LOC RWY 23R

BATTLE CREEK EXEC AT KELLOGG FLD (BTL)

ADF required. RADAR required for procedure entry. RNP APCH - GPS.		MALSR 	MISSED APPROACH: Climb to 1400 then climbing left turn to 3000 direct VVTEN and hold, continue climb-in-hold to 3000.
<p>▽ Circling NA to Rwys 5R and 23L. Circling Rwy 31 NA at night. For inop ALS increase S-LOC 23R Cat C/D visibility to 1 3/8 SM. * RVR 1800 authorized with use of FD or AP or HUD to DA (NA when using Grand Rapids altimeter setting).</p>			

ATIS 128.325	GREAT LAKES APP CON* 119.2 239.25	BATTLE CREEK TOWER* 126.825 (CTAF)	GND CON 121.7	UNICOM 122.95
------------------------	---	--	-------------------------	-------------------------



CATEGORY	A	B	C	D
S-ILS 23R*	1129/24		200 (200-1/2)	
S-LOC 23R	1400/24	471 (500-1/2)	1400/50	471 (500-1)
CIRCLING	1420-1 468 (500-1)	1480-1 528 (600-1)	1520-1 1/2 568 (600-1 1/2)	1520-2 568 (600-2)

EC-1, 16 APR 2026 to 14 MAY 2026

EC-1, 16 APR 2026 to 14 MAY 2026