

WAAS CH <b>61220</b> <b>W05A</b>	APP CRS <b>047°</b>	Rwy Ldg <b>10004</b> TDZE <b>952</b> Apt Elev <b>952</b>
--	------------------------	--

# RNAV (GPS) RWY 5L

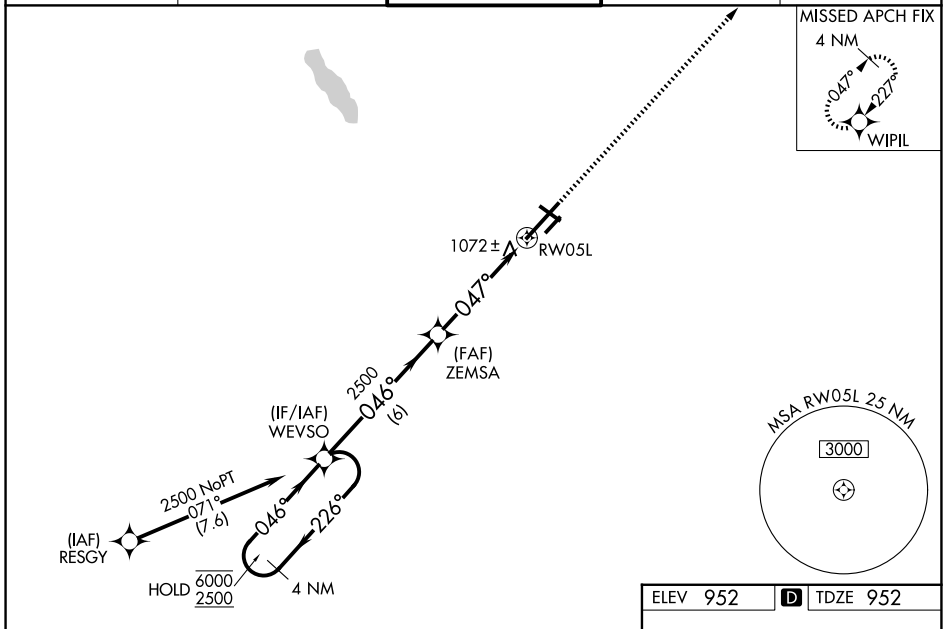
BATTLE CREEK EXEC AT KELLOGG FLD (BTL)

RNP APCH - GPS

**⚠** For uncompensated Baro-VNAV systems, LNAV/VNAV NA below -16°C or above 54°C. Circling to Rwy 5R, 23L and 31 NA at night. When local altimeter setting not received, use Grand Rapids altimeter setting and increase LPV DA to 1425 feet and all visibilities 3/8 SM; increase LNAV/VNAV DA to 1361 feet and all visibilities 1/4 SM; increase all MDAs 120 feet and LNAV visibility Cat C and D 3/8 SM and Circling visibility Cat C and D 1/2 SM. VDP and Baro-VNAV NA when using Grand Rapids altimeter setting. Rwy 5L helicopter visibility reduction below 3/4 SM NA.

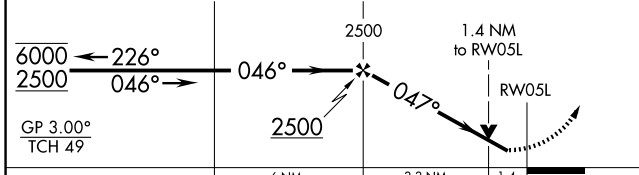
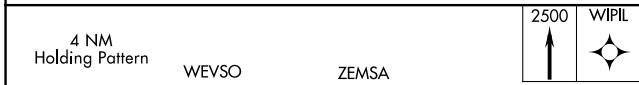
**MISSED APPROACH:**  
Climb to 2500 direct WIPIL and hold.

ATIS <b>128.325</b>	GREAT LAKES APP CON* <b>119.2 239.25</b>	BATTLE CREEK TOWER* <b>126.825</b> (CTAF)	GND CON <b>121.7</b>	UNICOM <b>122.95</b>
------------------------	---	--	-------------------------	-------------------------



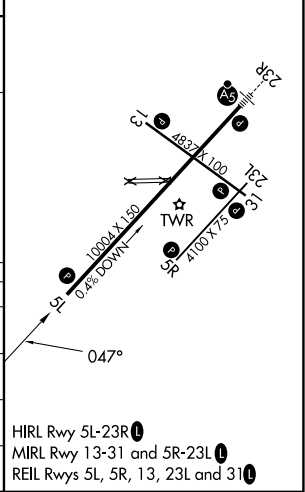
EC-1, 16 APR 2026 to 14 MAY 2026

EC-1, 16 APR 2026 to 14 MAY 2026



CATEGORY	A	B	C	D
LPV DA		1317-1	365 (400-1)	
LNAV/VNAV DA		1253-7/8	301 (400-7/8)	
LNAV MDA	1440-1	488 (500-1)	1440-13/8	488 (500-13/8)
CIRCLING	1440-1 488 (500-1)	1480-1 528 (600-1)	1520-1 1/2 568 (600-1 1/2)	1520-2 568 (600-2)

ELEV 952	<b>D</b> TDZE 952
----------	-------------------



HIRL Rwy 5L-23R  
HIRL Rwy 13-31 and 5R-23L  
REIL Rws 5L, 5R, 13, 23L and 31