

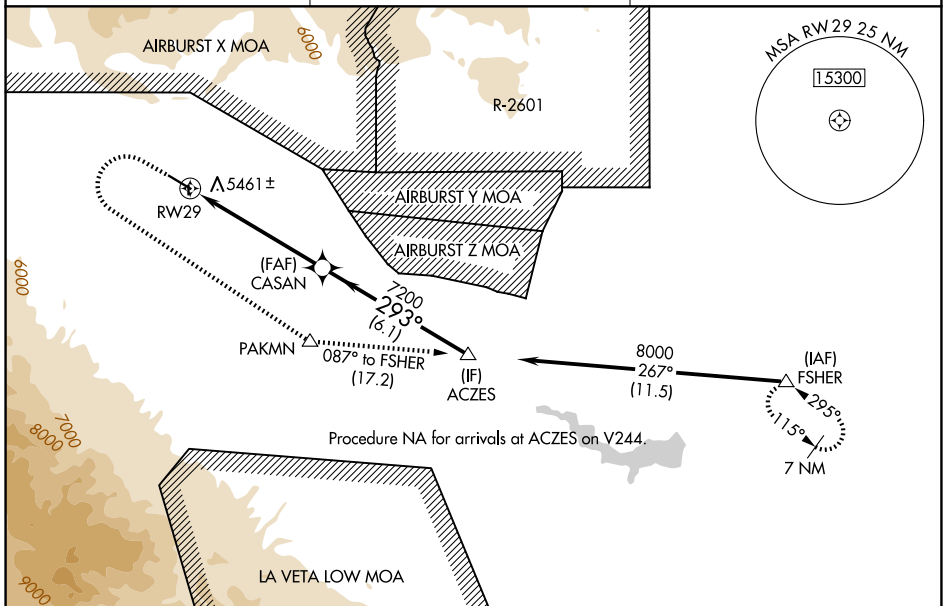
WAAS CH 69530 W29A	APP CRS 293°	Rwy Ldg TDZE Apt Elev	5399 5407 5442
--	------------------------	-----------------------------	---

RNAV (GPS) RWY 29

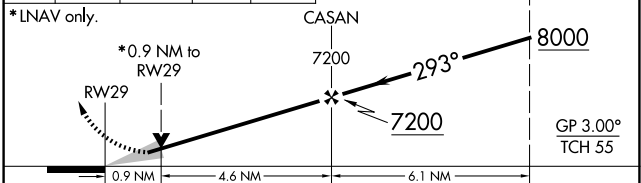
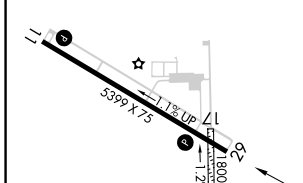
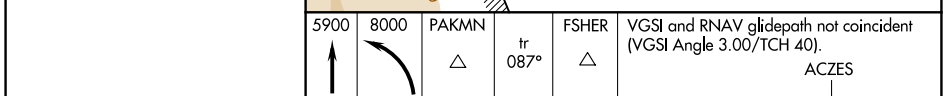
FREMONT COUNTY (1V6)

RNP APCH. ▼ For uncompensated Baro-VNAV systems, LNAV/VNAV NA below -25°C or above 54°C. Circling NA north of Rwy 11-29. Circling NA to Rwy 35.	MISSED APPROACH: (Do not exceed 210K until PAKMN) Climb to 5900 then climbing left turn to 8000 direct PAKMN and track 087° to FSHER and hold.
--	--

AWOS-3PT 120.025	DENVER APP CON * 120.1 290.5	UNICOM 122.8 (CTAF) 0
----------------------------	--	---------------------------------



ELEV 5442	TDZE 5407
------------------	------------------



	A	B	C	D
LPV DA	5657- ³ / ₄		250 (300- ³ / ₄)	NA
LNAV/VNAV DA	5657- ³ / ₄		250 (300- ³ / ₄)	NA
LNAV MDA	5720-1	313 (300-1)	5720- ⁷ / ₈ 313 (300- ⁷ / ₈)	NA
CIRCLING	5800-1 358 (400-1)	5900-1 458 (500-1)	5980-1 ¹ / ₂ 538 (600-1 ¹ / ₂)	NA

SW-1, 16 APR 2026 to 14 MAY 2026

SW-1, 16 APR 2026 to 14 MAY 2026