

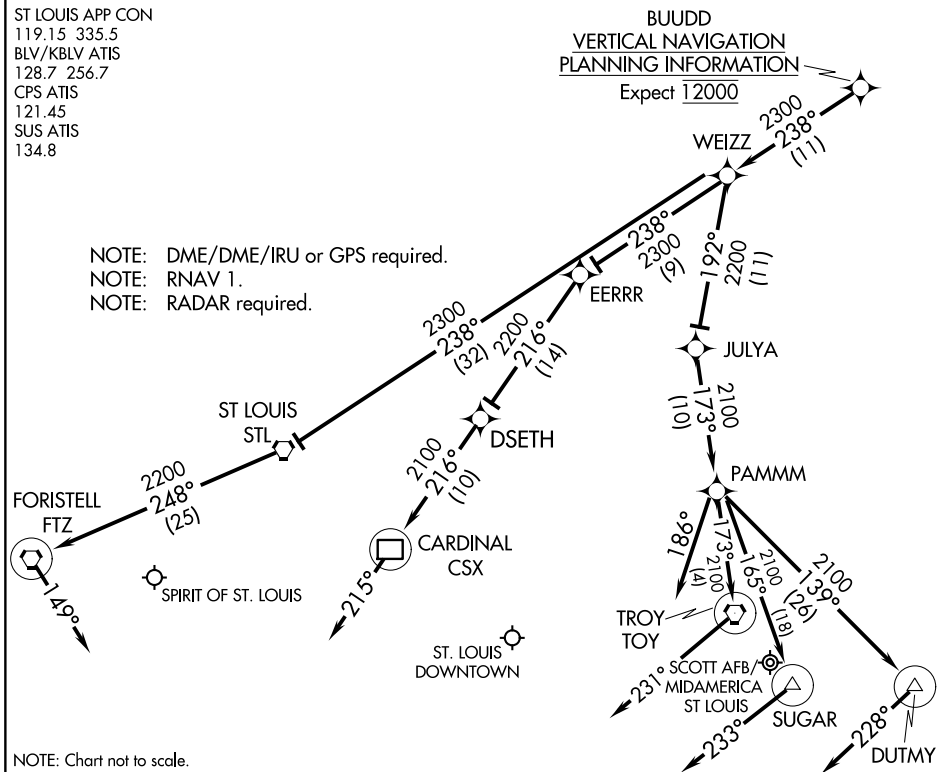
# BUUDD THREE ARRIVAL (RNAV)

ST LOUIS APP CON  
 119.15 335.5  
 BLV/KBLV ATIS  
 128.7 256.7  
 CPS ATIS  
 121.45  
 SUS ATIS  
 134.8

### BUUDD VERTICAL NAVIGATION PLANNING INFORMATION

Expect 12000

- NOTE: DME/DME/IRU or GPS required.
- NOTE: RNAV 1.
- NOTE: RADAR required.



NOTE: Chart not to scale.

### ARRIVAL ROUTE DESCRIPTION

#### SPIRIT OF ST. LOUIS:

**LANDING RUNWAYS 8L/R:** From BUUDD on track 238° to WEIZZ, then on track 238° to STL VORTAC, then on track 248° to FTZ VORTAC. Expect RADAR vectors prior to FTZ VORTAC, if no heading received, track 149°.

**LANDING RUNWAYS 26L/R:** From BUUDD on track 238° to WEIZZ, then on track 238° to EERRR, then on track 216° to DSETH, then on track 216° to CSX DME. Expect RADAR vectors prior to CSX DME, if no heading received, track 215°.

#### ST. LOUIS DOWNTOWN:

**LANDING RUNWAY 12R:** From BUUDD on track 238° to WEIZZ, then on track 192° to JULYA, then on track 173° to PAMMM. Expect RADAR vectors prior to PAMMM, if no heading received, track 186°.

**LANDING RUNWAYS 30L/R:** From BUUDD on track 238° to WEIZZ, then on track 192° to JULYA, then on track 173° to PAMMM, then on track 165° to SUGAR. Expect RADAR vectors prior to SUGAR, if no heading received, track 233°.

#### SCOTT AFB/MIDAMERICA ST LOUIS:

**LANDING RUNWAYS 14L/R:** From BUUDD on track 238° to WEIZZ, then on track 192° to JULYA, then on track 173° to PAMMM, then on track 173° to TOY VORTAC. Expect RADAR vectors prior to TOY VORTAC, if no heading received, track 231°.

**LANDING RUNWAYS 32L/R:** From BUUDD on track 238° to WEIZZ, then on track 192° to JULYA, then on track 173° to PAMMM, then on track 139° to DUTMY. Expect RADAR vectors prior to DUTMY, if no heading received, track 228°.