

LOC I-OXK <b>109.9</b>	APP CRS <b>139°</b>	Rwy Ldg <b>8006</b> TDZE <b>459</b> Apt Elev <b>459</b>
---------------------------	------------------------	---

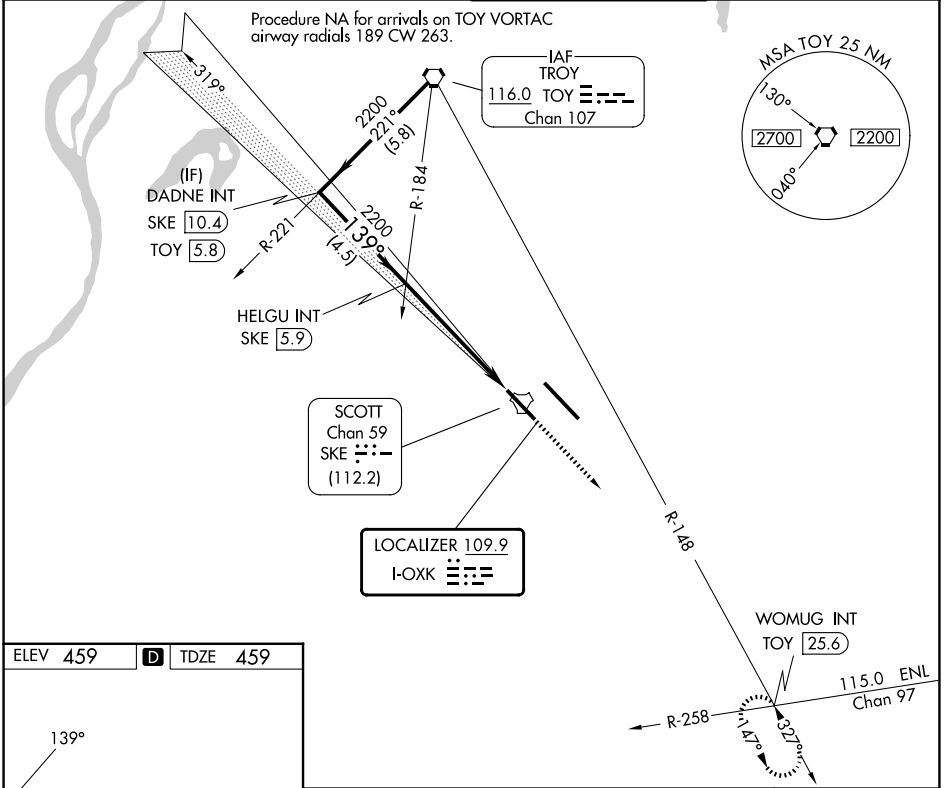
# ILS or LOC RWY 14R

SCOTT AFB/MIDAMERICA ST LOUIS (BLV)

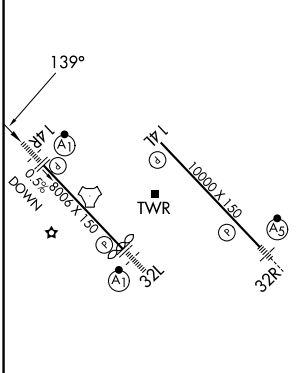
**⚠** For inop ALS, increase S-ILS 14R Cat E visibility to RVR 4000 and S-LOC 14R Cat E visibility to 1 3/4 mile. DME from SKE TACAN. DME use requires simultaneous reception of I-OXK and SKE DME.  
**⚠** ASR \*RVR 1800 authorized with use of FD or AP or HUD to DA.

**ALSF-1** MISSED APPROACH: Climb to 2200 then on TOY VORTAC R-148 to WOMUG INT/TOY 25.6 DME and hold.

ATIS <b>128.7 256.7</b>	ST LOUIS APP CON <b>125.2 281.5</b>	SCOTT TOWER <b>128.25 253.5</b>	GND CON <b>119.2 275.8</b>
----------------------------	--	------------------------------------	-------------------------------



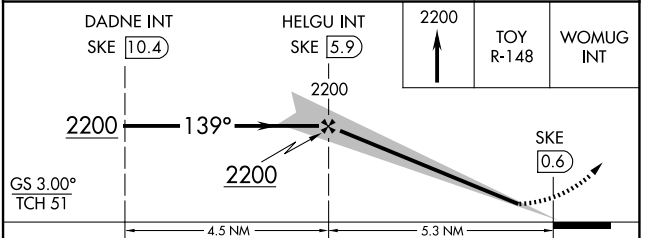
ELEV <b>459</b>	<b>D</b>	TDZE <b>459</b>
-----------------	----------	-----------------



HIRL Rwy 14L-32R and 14R-32L  
REIL Rwy 14L

FAF to MAP 5.3 NM

Knots	60	90	120	150	180
Min:Sec	5:18	3:32	2:39	2:07	1:46



CATEGORY	A	B	C	D	E
S-ILS 14R*	659/24 200 (200-1/2)				
S-LOC 14R	1040/24	581 (600-1/2)	1040-1 1/4 581 (600-1 1/4)		
CIRCLING	1040-1 581 (600-1)	1120-1 661 (700-1)	1240-2 1/4 781 (800-2 1/4)	1240-2 1/2 781 (800-2 1/2)	1240-2 3/4 781 (800-2 3/4)

EC-3, 16 APR 2026 to 14 MAY 2026

EC-3, 16 APR 2026 to 14 MAY 2026