

# LINDBERGH NINE DEPARTURE

ST LOUIS DEP CON  
125.2 281.5  
ATIS  
128.7 256.7  
CLNC DEL  
119.875 263.025  
GND CON  
119.2 275.8  
SCOTT TOWER  
128.25 253.5

DME and RADAR required.

**TOP ALTITUDE:  
ASSIGNED BY ATC**

ST LOUIS  
117.4 STL  
Chan 121

VICHY  
117.7 VIH  
Chan 124

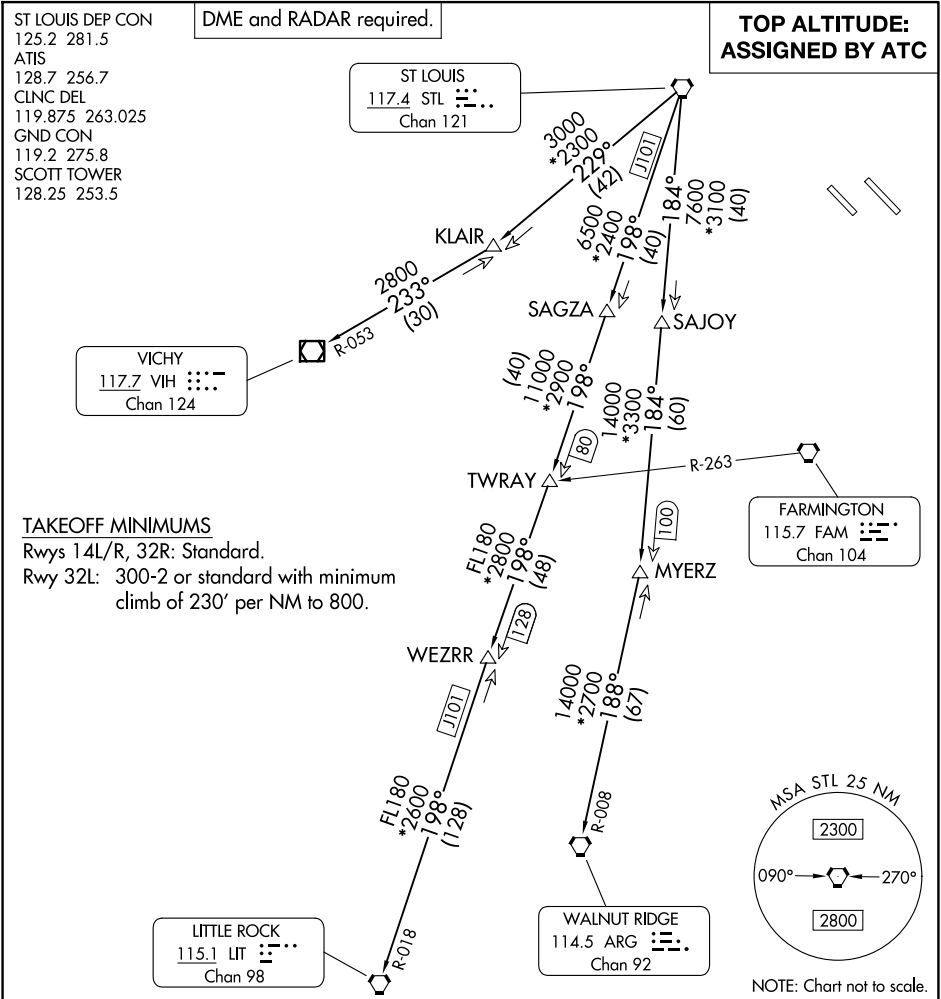
FARMINGTON  
115.7 FAM  
Chan 104

LITTLE ROCK  
115.1 LIT  
Chan 98

WALNUT RIDGE  
114.5 ARG  
Chan 92

### TAKEOFF MINIMUMS

Rwys 14L/R, 32R: Standard.  
Rwy 32L: 300-2 or standard with minimum  
climb of 230' per NM to 800.



### DEPARTURE ROUTE DESCRIPTION

**TAKEOFF ALL RUNWAYS:** Climb on assigned heading for RADAR vectors to appropriate route, maintain ATC assigned altitude and expect filed altitude 10 minutes after departure.

**LITTLE ROCK TRANSITION (LINDY9.LIT):** From over STL VORTAC on STL R-198 and LIT R-018 to LIT VORTAC.

**MYERZ TRANSITION (LINDY9.MYERZ):** From over STL VORTAC on STL R-184 to MYERZ.

**VICHY TRANSITION (LINDY9.VIH):** From over STL VORTAC on STL R-229 and VIH R-053 to VIH VOR/DME.

**WALNUT RIDGE TRANSITION (LINDY9.ARG):** From over STL VORTAC on STL R-184 and ARG R-008 to ARG VORTAC.