

# PLESS FIVE DEPARTURE

AL-46 (FAA)

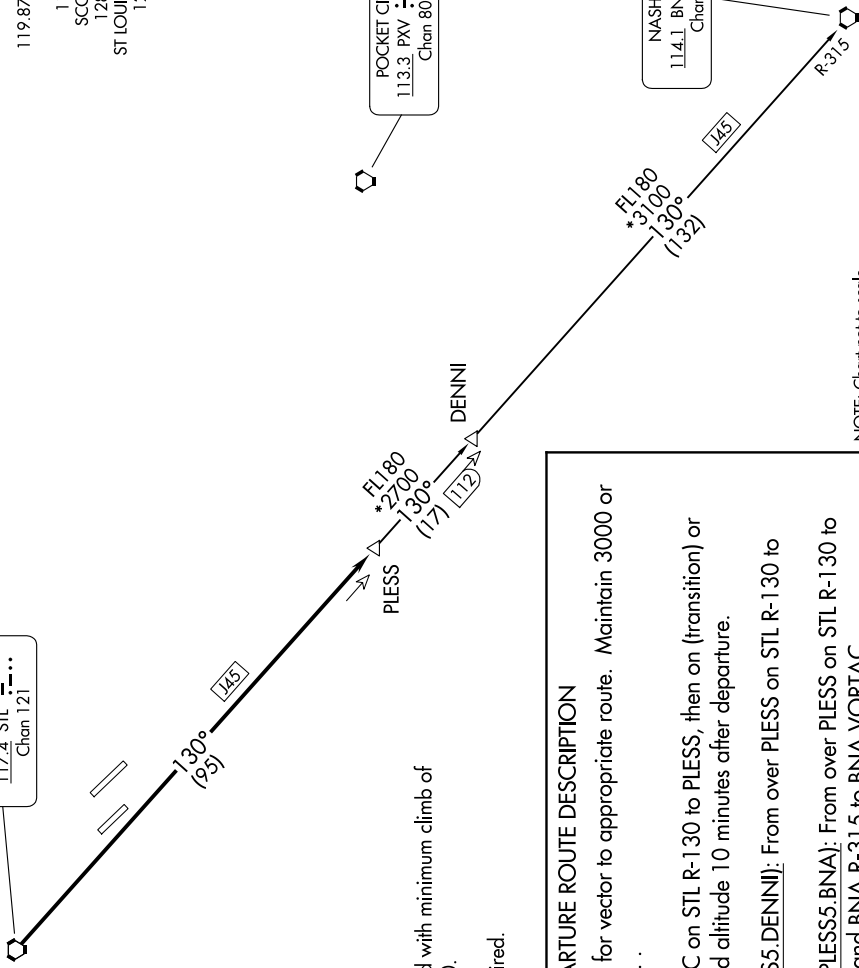
SCOTT AFB/MIDAMERICA ST LOUIS (BLV)  
BELLEVILLE, ILLINOIS

ATIS  
128.7 256.7  
CLNC DEL  
119.875 263.025  
GND CON  
119.2 275.8  
SCOTT TOWER  
128.25 253.5  
ST LOUIS DEP CON  
125.2 281.5

POCKET CITY  
113.3 PXY  
Chan 80

NASHVILLE  
114.1 BNA  
Chan 88

ST. LOUIS  
117.4 STL  
Chan 121



EC-3, 16 APR 2026 to 14 MAY 2026

## TOP ALTITUDE: ASSIGNED BY ATC



## TAKEOFF MINIMUMS

Rwys 14L/R, 32R: Standard.  
Rwy 32L: 300-1½ or standard with minimum climb of 250' per NM to 800.

NOTE: DME and RADAR required.

## DEPARTURE ROUTE DESCRIPTION

Climb on assigned heading for vector to appropriate route. Maintain 3000 or assigned altitude, thence. . . .

. . . . from over STL VORTAC on STL R-130 to PLESS, then on (transition) or (assigned route). Expect filed altitude 10 minutes after departure.

DENNI TRANSITION (PLESS5.DENNI): From over PLESS on STL R-130 to DENNI.

NASHVILLE TRANSITION (PLESS5.BNA): From over PLESS on STL R-130 to DENNI, then on STL R-130 and BNA R-315 to BNA VORTAC.

NOTE: Chart not to scale.

# PLESS FIVE DEPARTURE

EC-3, 16 APR 2026 to 14 MAY 2026