

RNAV (RNP) Z RWY 14R

SCOTT AFB/MIDAMERICA ST LOUIS (BLV)

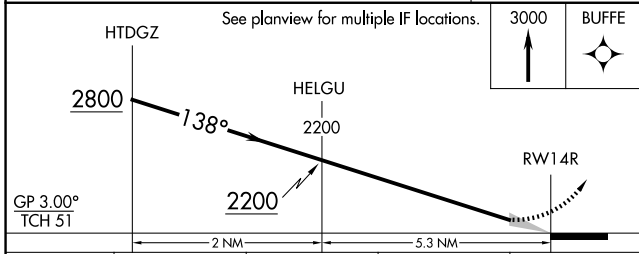
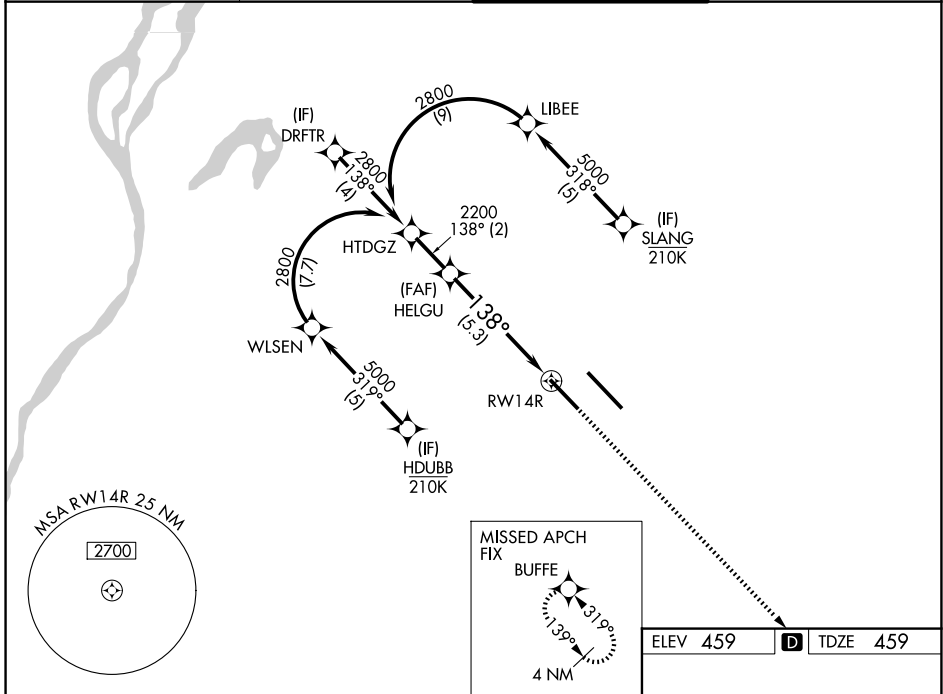
| | |
|------------------------|------------------------|
| APP CRS 138° | Rwy Ldg 8006 |
| | TDZE 459 |
| | Apt Elev 459 |

RNP AR APCH - GPS. Authorization required. From WLSEN, LIBEE: RF

For uncompensated Baro-VNAV systems, procedure NA below -15°C or above 54°C.
 For inop ALS, increase RNP 0.11 all Cats visibility to RVR 5500.
 For inop ALS, increase RNP 0.15 all Cats visibility to RVR 6000.
 For inop ALS, increase RNP 0.30 all Cats visibility to 1½ SM.

ALSF-1 MISSED APPROACH: Climb to 3000 direct BUFFE and hold.

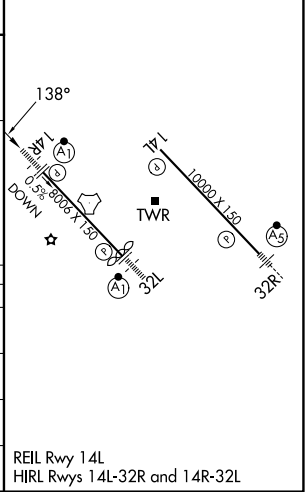
| | | | |
|----------------------------|--|------------------------------------|-------------------------------|
| ATIS 128.7 256.7 | ST LOUIS APP CON 125.2 281.5 | SCOTT TOWER 128.25 253.5 | GND CON 119.2 275.8 |
|----------------------------|--|------------------------------------|-------------------------------|



| CATEGORY | A | B | C | D |
|-------------|---|---------|--------------|---|
| RNP 0.11 DA | | 803/30 | 344 (400-¾) | |
| RNP 0.15 DA | | 871/40 | 412 (500-¾) | |
| RNP 0.30 DA | | 1019/60 | 560 (600-1¼) | |

AUTHORIZATION REQUIRED

ELEV 459 TDZE 459



EC-3, 16 APR 2026 to 14 MAY 2026

EC-3, 16 APR 2026 to 14 MAY 2026