

APP CRS <b>319°</b>	Rwy Ldg <b>7822</b>
	TDZE <b>439</b>
	Apt Elev <b>459</b>

# RNAV (RNP) Z RWY 32L


SCOTT AFB/MIDAMERICA ST LOUIS (BLV)

RNP AR APCH - GPS. Authorization required. From JBELL, PARLY: RF

▼ For uncompensated Baro-VNAV systems, procedure NA below -15°C or above 54°C

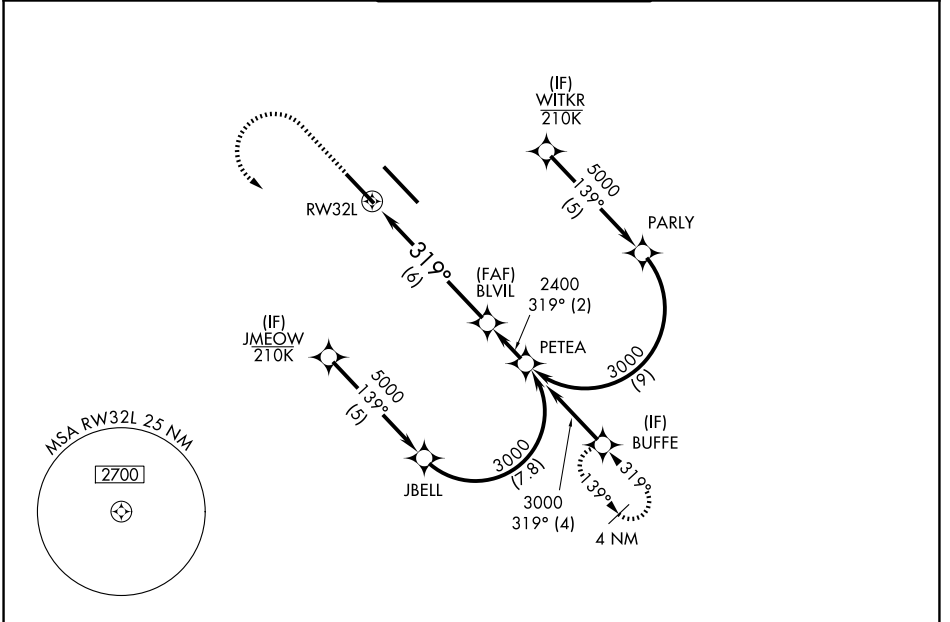
▲ NA For inop ALS, increase RNP 0.15 all Cats visibility to RVR 4500.

ASR For inop ALS, increase RNP 0.30 all Cats visibility to RVR 5500.

ALSF-1 

MISSED APPROACH: Climb to 1500 then climbing left turn to 3000 direct BUFFE and hold.

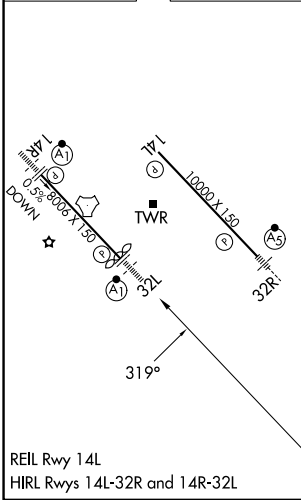
ATIS <b>128.7 256.7</b>	ST LOUIS APP CON <b>125.2 281.5</b>	SCOTT TOWER <b>128.25 253.5</b>	GND CON <b>119.2 275.8</b>
----------------------------	--	------------------------------------	-------------------------------



EC-3, 16 APR 2026 to 14 MAY 2026

EC-3, 16 APR 2026 to 14 MAY 2026

ELEV 459	<b>D</b>	TDZE 439
----------	----------	----------



REIL Rwy 14L  
HIRL Rwy 14L-32R and 14R-32L

1500	3000	BUFFE	VGSI and RNAV glidepath not coincident. (VGSI Angle 3.00/TCH 50)
See planview for multiple IF locations.			PETEA
RWY32L	BLVIL 2400	319°	3000
	2400	2400	GP 3.00° TCH 57
	6 NM	2 NM	
CATEGORY	A	B	C
RNP 0.15 DA		743/24	304 (300-1/2)
RNP 0.30 DA		802/35	363 (400-5/8)
<b>AUTHORIZATION REQUIRED</b>			