




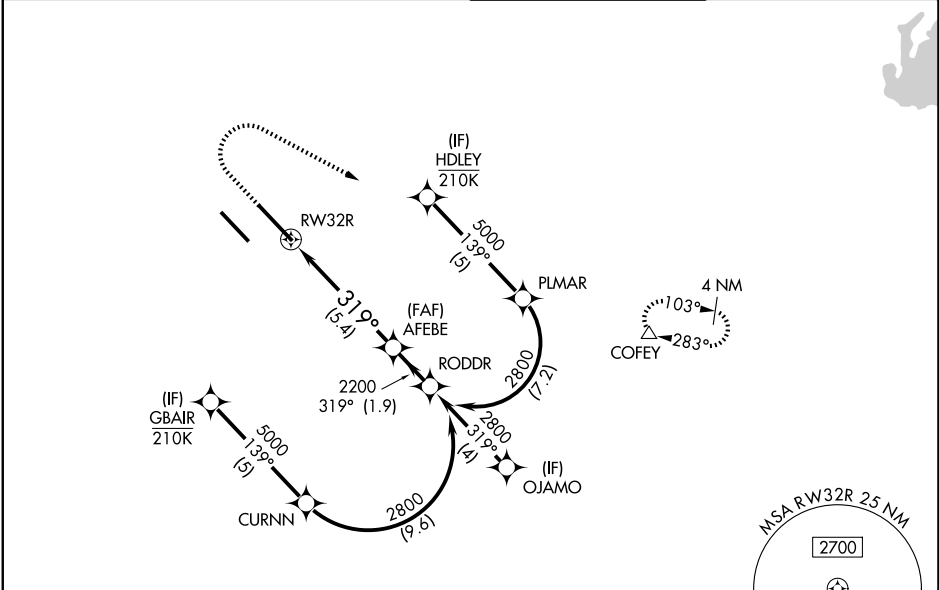
APP CRS	Rwy Ldg	<b>10000</b>
<b>319°</b>	TDZE	<b>442</b>
	Apt Elev	<b>459</b>

# RNAV (RNP) Z RWY 32R

SCOTT AFB/MIDAMERICA ST LOUIS (BLV)

RNP AR APCH - GPS. Authorization required. From PLMAR, CURNN: RF		MALSR	 MISSED APPROACH: Climb to 1500 then climbing right turn to 3000 direct COFEY and hold.
 For uncompensated Baro-VNAV systems, procedure NA below -15°C or above 54°C.  For inop ALS, increase RNP 0.30 all Cats visibility to RVR 4500.	ASR		

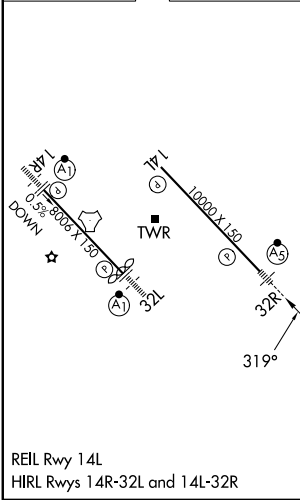
ATIS <b>128.7 256.7</b>	ST LOUIS APP CON <b>125.2 281.5</b>	SCOTT TOWER <b>128.25 253.5</b>	GND CON <b>119.2 275.8</b>
----------------------------	--	------------------------------------	-------------------------------






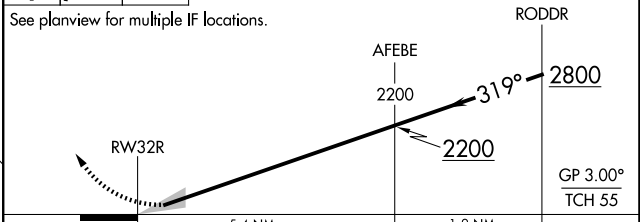
EC-3, 16 APR 2026 to 14 MAY 2026

EC-3, 16 APR 2026 to 14 MAY 2026

ELEV 459	<b>D</b>	TDZE 442
----------	----------	----------



1500	3000	COFEY	VGSI and RNAV glidepath not coincident (VGSI Angle 3.00/TCH 71).
			



See planview for multiple IF locations.				
RODDR	AFEBE			
2800	2200			
319°	2200			
5.4 NM	1.9 NM			
				GP 3.00°
				TCH 55

CATEGORY	A	B	C	D
RNP 0.30 DA	747/24		305 (300-1/2)	

## AUTHORIZATION REQUIRED