

WAAS CH 58218 W14A	APP CRS 139°	Rwy Ldg 10000 TDZE 442 Apt Elev 459
--	------------------------	--

RNAV (GPS) Y RWY 14L

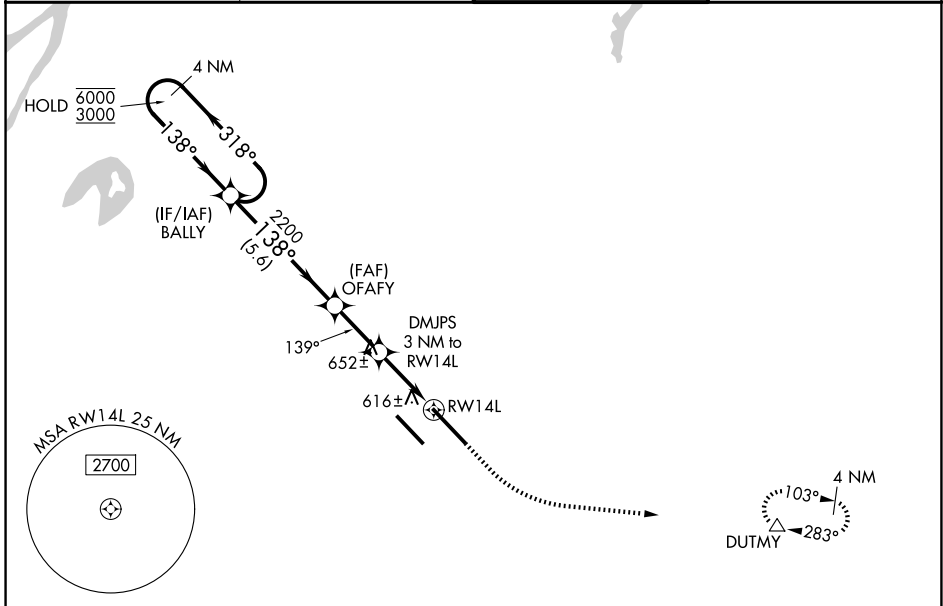
SCOTT AFB/MIDAMERICA ST LOUIS (BLV)

RNP APCH - GPS.

▼ For uncompensated Baro-VNAV systems, LNAV/VNAV NA below -15°C or above 54°C. Rwy 14L helicopter visibility reduction below RVR 4000 NA.
▲ Simultaneous approach authorized.

MISSED APPROACH: Climb to 2000 then climbing left turn to 3000 direct DUTMY and hold.

ATIS 128.7 256.7	ST LOUIS APP CON 125.2 281.5	SCOTT TOWER 128.25 253.5	GND CON 119.2 275.8
----------------------------	--	------------------------------------	-------------------------------



EC-3, 16 APR 2026 to 14 MAY 2026

EC-3, 16 APR 2026 to 14 MAY 2026

4 NM Holding Pattern		VGSI and RNAV glidepath not coincident (VGSI Angle 3.00/TCH 71).		2000	3000	DUTMY	ELEV 459	D	TDZE 442
BALLY		OFAFY		DMJPS	RWY 14L				
6000 ← 318°		2200		3 NM to RWY 14L		1.2 NM to RWY 14L			
3000 → 138°		2200		1.8 NM		1.2 NM			
GP 3.00°		2200		1.440		RWY 14L			
TCH 55		5.6 NM		2.4 NM		1.8 NM		1.2 NM	
CATEGORY	A	B	C	D					
LPV DA	694/40		252 (300-¾)						
LNAV/VNAV DA	900-1⅓		458 (500-1⅓)						
LNAV MDA	900/55		458 (500-1)		900-1⅓		458 (500-1⅓)		
CIRCLING	1000-1 541 (600-1)		1120-1 661 (700-1)		1240-2¼ 781 (800-2¼)		1240-2½ 781 (800-2½)		REIL Rwy 14L HIRL Rws 14R-32L and 14L-32R